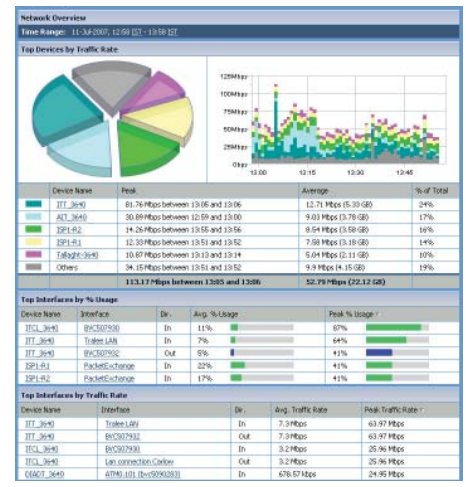




Fluke Networks NetFlow Tracker: Network Visibility, Security, Planning and Troubleshooting

NetFlow Tracker is a leading network and application monitoring and reporting solution that uses IPFIX flow information from the Nortel Ethernet Routing Switch 8600 and Ethernet Routing Switch 5500 series to provide real time and historical multi-tiered reports for security, planning, troubleshooting and compliance assistance on your network and IP application usage.



Leveraging the strengths of its Developer Partners and their Compatible Products, the Developer Program has become a key contributor in the success of Nortel by broadening its reach and responsiveness in meeting the needs of its channels and customers. Each Nortel Compatible Product has met established requirements for integration, functionality and stability, further reducing total cost of ownership.

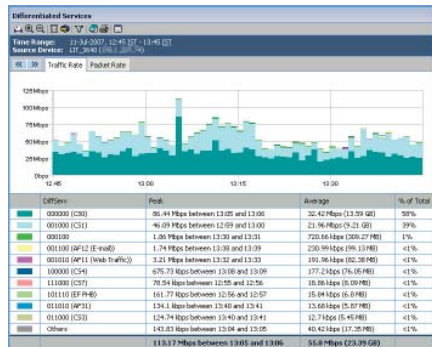
NetFlow Tracker will provide deep analysis and reporting, all in Single Sever architecture. It monitors network and IP application traffic in real time running across the Nortel Ethernet Routing Switch infrastructure and produces a series of pre-formatted and customizable reports on all aspects of the traffic including

- User / server conversations
- Application and protocol bandwidth utilization
- Type of service / quality of service information
- Multicast traffic
- Security related information (worm / virus / port scans)
- VoIP and other real time IP applications

The configuration, administration and Graphical User Interface to NetFlow Tracker is 100% browser based, is very easy to use and allows fast navigation from high level executive reports right down to deep forensic information on a per conversation / per minute basis. Drawing on the embedded IPFIX flow information easily accessible from within the Ethernet Routing Switch 8600 and Ethernet Routing Switch 5500 series, NetFlow Tracker provides a host of powerful features:

Primary Features

- 100% Browser front end with a Single server architecture for Collection, Storage, Reporting and Administration – no additional probes or appliances required.
- Captures All elements of All Flow records, All the Time with the best granularity available on the market.
- In excess of 30 pre-configured IP traffic reports are available as standard for any network device, interface or group of devices or interfaces, including source, destination, conversation, protocol, application, type of service, diffserv, source address popularity, destination address popularity, client / server conversations, AS pairs, next hop, BGP next Hop.
- Bi-Directional reporting further enhancing visibility and conversation reporting.
- High level executive summary reports and heavily customized reports are available with interactive Pie Chart / Bar Chart / Tabular analysis and reporting
- Long term report storage for up to 999 years
- Real time data (on a per minute basis) archived storage for As Long As you wish
- MPLS / VPN aware – provides automatic alteration and administration of multi-site VPN based reports
- Accurate IP Multicast traffic reporting
- TCP port grouping to provide 'Single Application / multi-port' reports
- Powerful user definable report filters can be created and saved to include or exclude any combination of fields or devices or time ranges.
- Add on Portal solution provides a single authentication / access control point and mediation services between multiple installations in multiple sites coupled with extensive customized user access control.
- Data and Reports may be exported to other systems in several formats



Configuration and Ease of Use

Configuration and Usage is 100% web based with intuitive and easy to use system navigation. Initial installation usually takes no more than 30 minutes (on a previously commissioned Windows or Linux server). Quick installation and ease of use does not mask the power and flexibility of the NetFlow Tracker product. An extensive and powerful Filter editor allows more experienced users to create exacting reports on specific network, user or application elements. Individual executive reports may be exactly tailored with more or less granular information to suit the specific audience and each user may be granted access only to reports appropriate to themselves, their department or organization. In the majority of cases Enterprise customers install, commission and administer the combined solution without the need for any external professional services – further reducing the overall cost of acquisition and deployment and improving the Return on Investment models around the software solution.

Resilience and Scalability

NetFlow Tracker supports a fully resilient architecture – if required you can configure Flow Repeaters to allow multiple servers to all collect, store and report on the same network traffic. For single server installations the real time and historical databases may be streamed to external SAN / NAS storage devices both for resiliency and additional storage capacity if required. As your requirements grow multiple servers may be installed at multiple locations. These can operate as stand alone systems or you can produce consolidated Network wide reports across all servers though our add-on Portal Application called OneView. All product upgrades are easy to apply and do not require a re-installation of the core system or any loss of previously stored data.

Market Position

NetFlow Tracker has been widely adopted World Wide by a significant range of Telecommunications, Enterprise and Public Sector organizations. Fluke Networks strong vendor alliances and development partnerships with complimentary organizations such as Nortel and other network and NMS vendors allow them to successfully operate in all key market segments, geographically and vertically. By IPFIX enabling both stackable Ethernet Routing Switch 5500 series as well as the Ethernet Routing Switch 8600 series chassis based solutions Nortel have given a far wider customer base the ideal opportunity to leverage a strong partnership with Fluke Networks with a great information source using IPFIX.

Company Information

Company Name:
Fluke Networks
URL: www.flukenetworks.com
Technical support email:
support@flukenetworks.com
Technical support phone:
1-800-283-5853 or 1-425-446-4519
Sales Contact:
Neil Wisdom
Sales phone:
1 800 282-5853 US
+44 1923 281300 EMEA
Sales email:
sales@flukenetworks.com

For all inquiries on this product, please provide the following reference code: NFTNOR



205 Westwood Ave
Long Branch, NJ 07740
1-877-742-TEST (8378)
Fax: (732) 222-7088
salesteam@Tequipment.NET

Compatibility Information:
NetFlow Tracker release 3.1 was verified as compatible in a controlled laboratory environment. For complete compatibility details, including specific Nortel platforms and releases, please refer to the Certificates of Compatibility at:
www.nortel.com/prd/dpp/product/prodpages/z6330.html



www.nortel.com/compatible

Nortel, the Nortel logo, and the Globemark are trademarks of Nortel Networks. All other trademarks are the property of their owners.

Copyright © 2007 Nortel Networks. All rights reserved. Information in this document is subject to change without notice. Nortel assumes no responsibility for any errors that may appear in this document.