

Model 1000 Blower Door



Digital Gauge
Performs calculations automatically, reprogrammable with software updates.*



Smooth Power
Linearized control. More power and less heat.*



Calibrated Fan
Will not shatter or break. 10-year warranty.*



User Friendly
Fully automated software.

* Retrotec exclusive



Digital Gauge

The Retrotec DM32 displays every possible result and lets a user control fan speed via its touchscreen. Many features are ***exclusive** to Retrotec.

Results at exactly the pressure you need.*

Dimensions eliminate calculations.*

"Set Pressure" control to any pressure.*

Settings saved on shutdown. No need to adjust every time.*

Baseline automatically subtracted.

Calculates Result in any unit.*

"Set Speed" and adjust with intuitive up/down arrow keys.*

Home from any screen*

CFM@50 calculation eliminates the need for an exact test pressure.

ACH50 shown directly on the gauge.*

Normalized flow, CFM/sq ft required in USA or (cu m/h)/sq m in Europe.*

EqLA at 50 Pa lets you visualize the size of the hole in ducts or house.*

* exclusive

DM32 Digital Gauge

Weight	12oz/340g
Size	5.70 x 3.73 x 1.4 in 14.5 x 9.5 x 3.5 cm
Power	USB to AC adaptor 4200 mAh internal rechargeable battery

Result:

Units Available:

Example:

Pressure:	Pa, in WC, psf (lb/sq ft)	53.5 Pa
Flow:	CFM, L/s, cu m/s, cu m/h	253.5 CFM
Flow per area:	CFM/sq ft, CFM/100 sq ft, CFM/1000 sq ft, (L/s)/sq m, (cu m/h)/sq m	0.25 CFM/100 sq ft@75.0Pa
Leakage Area:	EqLA, EqLA10 (Canadian), EflA, EflA4 (US): sq in, sq ft, sq cm	12.8 EQLA sq in @10.0Pa
Leakage Area per area:	/100 sq ft, /sq m, /sq ft	1.15 EQLA10 sq in/sq ft
Air changes per hour:	According to volume entered: /hr	2.7 ACH



Frame Mount easily velcro gauge to frame.



Network control from a computer.*



Tapered connectors best seal & easy disconnect. Will not tear tubing.*



Rechargeable internal batteries save \$200/year.*



Umbilical helps with tubing organization.*

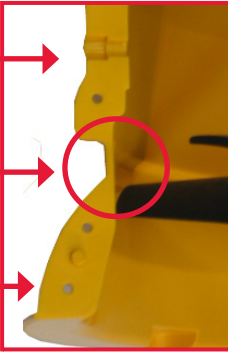
Model 1000 Fan

Tough Fan Shell

Strong motor mount holes will not tear out.*

Stiffer fan shell. Step prevents blade tip losses.*

Solid double riveted shell with gussets.*



10-year warranty on Fan Shell*

Power light indicates power to fan.*

On/Off switch restores speed to previous setting.*

*exclusive



Dual connections for multiple fans.*

Status light indicates good gauge connection.*

Control speed at the fan.*

Control options:



from the gauge speed control output



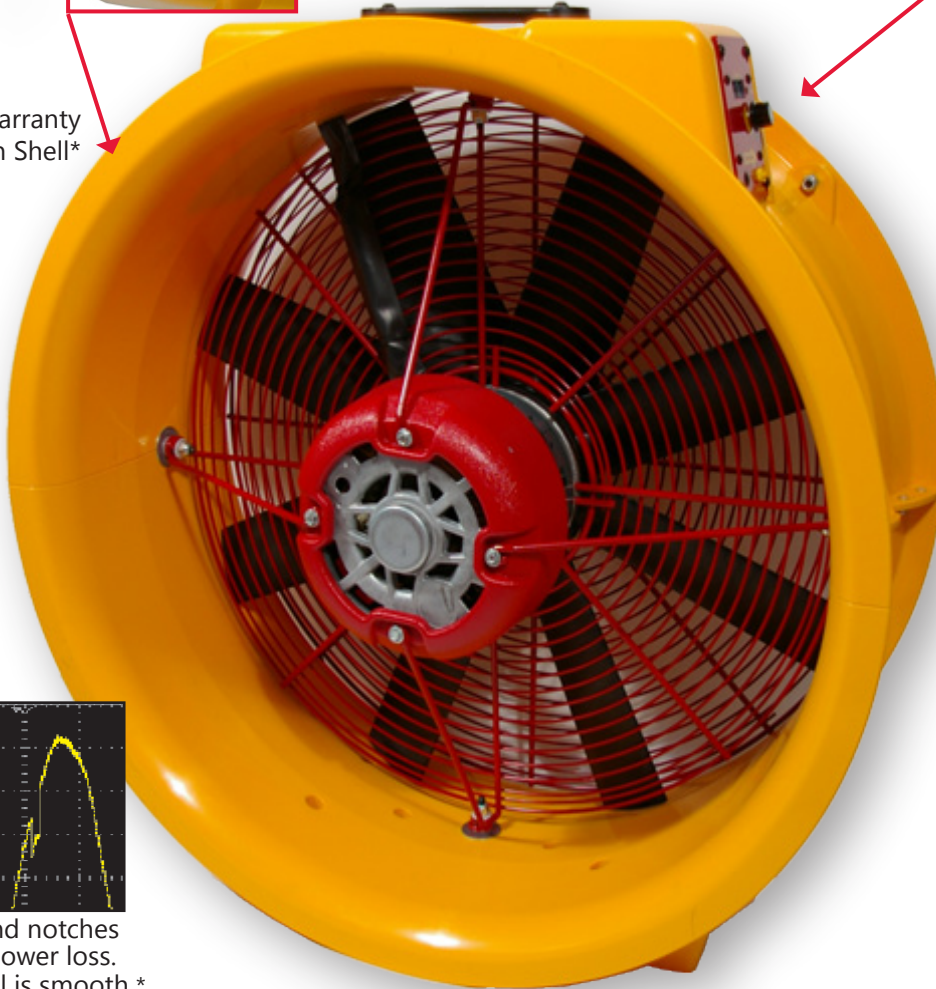
from fully automatic FanTestic software.



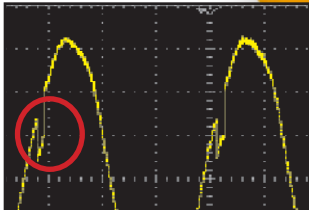
Link multiple fans for large building tests.*



from up to 100' away.* (extra cost)

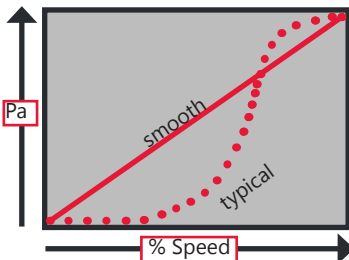


Smooth Power



Typical noise and notches create heat & power loss. Retrotec control is smooth.*

Smooth Control



Pressure and speed increase smoothly. Typically, controls accelerate in an uneven fashion creating surges and gaps.

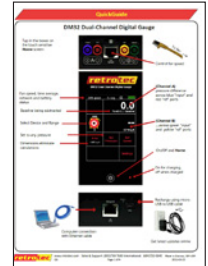
1000 Fan specs

	Flow into:	CFM	L/s	cu m/h
Maximum Flow <i>reduce values by 15% for 50Hz</i>	Free Air	6,300	2,973	10,700
	50 Pa	5,600	2,643	9,514
	75Pa	5,300	2,501	9,005
Minimum Flow (option)		5	2	8

Dimensions	22 in. inlet diameter, 9.75 in. long, 25 in. height		
Weight	32.8 lb (34 lb with A & B Range Rings)		
Flow Accuracy	+/- 3%		
Power	120V AC, 9A or 240V AC, 5A		50 or 60 Hz

System Components

Every system comes with detailed QuickGuides and step-by-step videos.



18. QG301

19. QG160



1. FN140

2. FN150

3. FN130

4. FN231

5. FN214

6. FN217

7. FN218

8. FN219

9. PT103

10. TU119

14. DM214

13. DM212

11. DM320

12. DM235



16. AL203

17. AL103

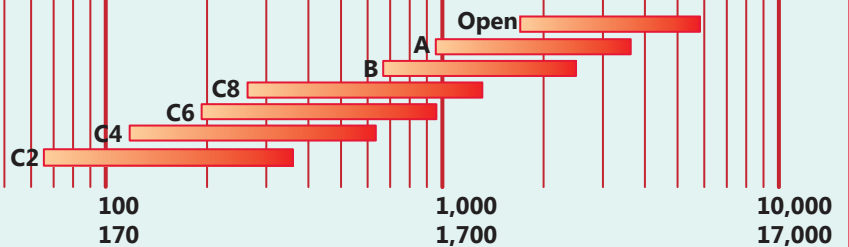
15. AL110

Includes:

1. 1000 Fan Top, 2. Model 1000 calibrated fan, 3. Fan Cover, 4. Fan Blade, 5. Range Plate A, 6. Range Plate B, 7. Range Plate C, 8. Plug set, 9. 25 ft power cord, 10. Color coded tubing kit with Static Pressure Probe, 11. DM32 digital gauge with internal rechargeable batteries (charge in the gauge), 12. 7 ft umbilical, 13. USB cable, 14. Laptop-style gauge case, 15. Aluminum frame, 16. Single fan cloth, 17. Gun-style case, 18. Blower Door QuickGuide, 19. DM32 QuickGuide.



(Flow at 50 Pascals)



CFM 10
cu m/h 17

100
170

1,000
1,700

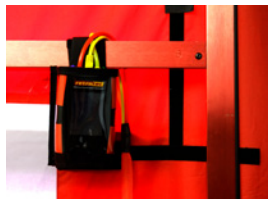
10,000
17,000

Wide span between the minimum/maximum flow, and seven included ranges, allow the leakiest and tightest buildings to be tested. Calibration meets ASTM E779-10, EN 13829, CGSB 149.10, ATTMA TS-1, NFPA 2001. Flow is reduced by 15% for 50Hz.

Options for Model 1000



Pressure Pans to locate leakiest ducts.
PT102 (large), # PT101 (small)



Upper Cross-bar
AL112



Frame extender kit to 48" wide by 105" high (requires large cloth). # AL215



Hard Sided Fan Case works as equipment stand.
FN211



Double fan cloth.
AL204

