

Commercial Enclosures



Commercial Enclosures

	C-Box Screw Cover with Knockouts - NEMA 1 299		N1J Series Panel Enclosure - NEMA 1 323
	C-Box Screw Cover without Knockouts - NEMA 1 301		N1A Series Panel Enclosure Non-Ventilated - NEMA 1 325
	C-Box Hinged Cover with Knockouts - NEMA 1 303		1420 Series Panel Enclosure Non-Ventilated - NEMA 1 327
	Splitter Boxes - NEMA 1 305		1416 Series Ventilated Component Case - NEMA 1 329
	Splitter Boxes - NEMA 3R, 12, 4..... 307		N1WS Series Surface Mount Panel Enclosure - NEMA 1 331
	Splitter Troughs - NEMA 1 309		N1WF Series Flush Mount Panel Enclosure - NEMA 1 333
	Splitter Troughs - NEMA 3R, 12, 4..... 311		Screw Cover Enclosures with Knockouts - NEMA 3R..... 335
	Splitter Blocks..... 313		Small Hinged Cover with Knockouts - NEMA 3R..... 339
	Grounding Kits..... 314		Medium Hinged Cover without Knockouts - NEMA 3R..... 341
	Metering Cabinets - NEMA 1 315		Hinged Cover Lift-Off without Knockouts - NEMA 3R..... 343
	Hydro-Quebec Metering Cabinets - NEMA 1 317		
	Ontario Hydro Metering Cabinets - NEMA 1 319		
	Metering Cabinets - NEMA 3R..... 321		

C-Box Screw Cover with Knockouts

NEMA 1


Commercial Enclosures

Application

- Designed for general purpose indoor commercial use as a junction, pull or switch box.

Standards

- UL-50 Type 1
- CSA Type 1
- **Complies with:**
 - NEMA Type 1
 - IEC 60529, IP20

Construction

- Formed and spot welded from 16 or 14 gauge steel depending on size.
- Flat steel covers fastened with plated steel screws.
- Keyhole slots permit cover to be lifted off without removing screws entirely.
- Easily removed knockouts on all 4 sides (see drawings for sizes and locations).
- Through holes in back for wall mounting.
- Grounding location embossed in body.

Finish

- Enclosure and cover are finished in ANSI 61 gray powder coating.

Part No.	Overall Dimensions			Mtg. Centers				Knockout Pattern Sides	H	Knockout Pattern Top & Bottom	Ship Wt. lbs.
	A	B	C	D	E	F	G				
CSKO443	4	4	3	2.25	3.00	0.88	0.50	B - C	0.28	A - B	2
CSKO663	6	6	3	3.00	5.00	1.50	0.50	B - C - D	0.28	B - C - D	3
CSKO863	8	6	3	5.00	5.00	1.50	0.50	F - G - H - I	0.28	B - C - D	3
CSKO16143	16	14	3	13.00	13.00	1.50	0.50	B - C - D - E - F - G - H	0.28	B - C - D - E - F - G - H	12
CSKO18143	18	14	3	15.00	13.00	1.50	0.50	A - B - C - D - E - F - G - H - I	0.28	B - C - D - E - F - G - H	13
CSKO20143	20	14	3	17.00	13.00	1.50	0.50	A - B - C - D - E - F - G - H - I	0.28	B - C - D - E - F - G - H	13
CSKO444	4	4	4	2.25	3.00	0.88	0.50	B - C	0.28	A - B	2
CSKO644	6	4	4	3.00	3.00	1.50	0.50	B - C - D	0.28	A - B	3
CSKO664	6	6	4	3.00	5.00	1.50	0.50	B - C - D	0.28	B - C - D	3
CSKO864	8	6	4	5.00	5.00	1.50	0.50	F - G - H - I	0.28	B - C - D	5
CSKO884	8	8	4	5.00	7.00	1.50	0.50	F - G - H - I	0.28	F - G - H - I	5
CSKO1084	10	8	4	7.00	7.00	1.50	0.50	F - G - H - I	0.28	F - G - H - I	6
CSKO10104	10	10	4	7.00	9.00	1.50	0.50	F - G - H - I	0.28	C - D - E - F - G	6
CSKO1284	12	8	4	9.00	7.00	1.50	0.50	C - D - E - F - G	0.28	F - G - H - I	7
CSKO12104	12	10	4	9.00	9.00	1.50	0.50	C - D - E - F - G	0.28	C - D - E - F - G	8
CSKO12124	12	12	4	9.00	11.00	1.50	0.50	C - D - E - F - G	0.28	C - D - E - F - G	9
CSKO16124	16	12	4	13.00	11.00	1.50	0.50	B - C - D - E - F - G - H	0.28	C - D - E - F - G	12
CSKO18124	18	12	4	15.00	11.00	1.50	0.50	A - B - C - D - E - F - G - H - I	0.28	C - D - E - F - G	12
CSKO18184	18	18	4	15.00	17.00	1.50	0.50	A - B - C - D - E - F - G - H - I	0.28	A - B - C - D - E - F - G - H - I	16
CSKO24244	24	24	4	21.00	23.00	1.50	0.50	C - D - E - F - G	0.28	C - D - E - F - G	33

Chart continued on next page...

 Technical references and CAD downloads available at www.hammondmfg.com

All dimensions in inches unless specified otherwise

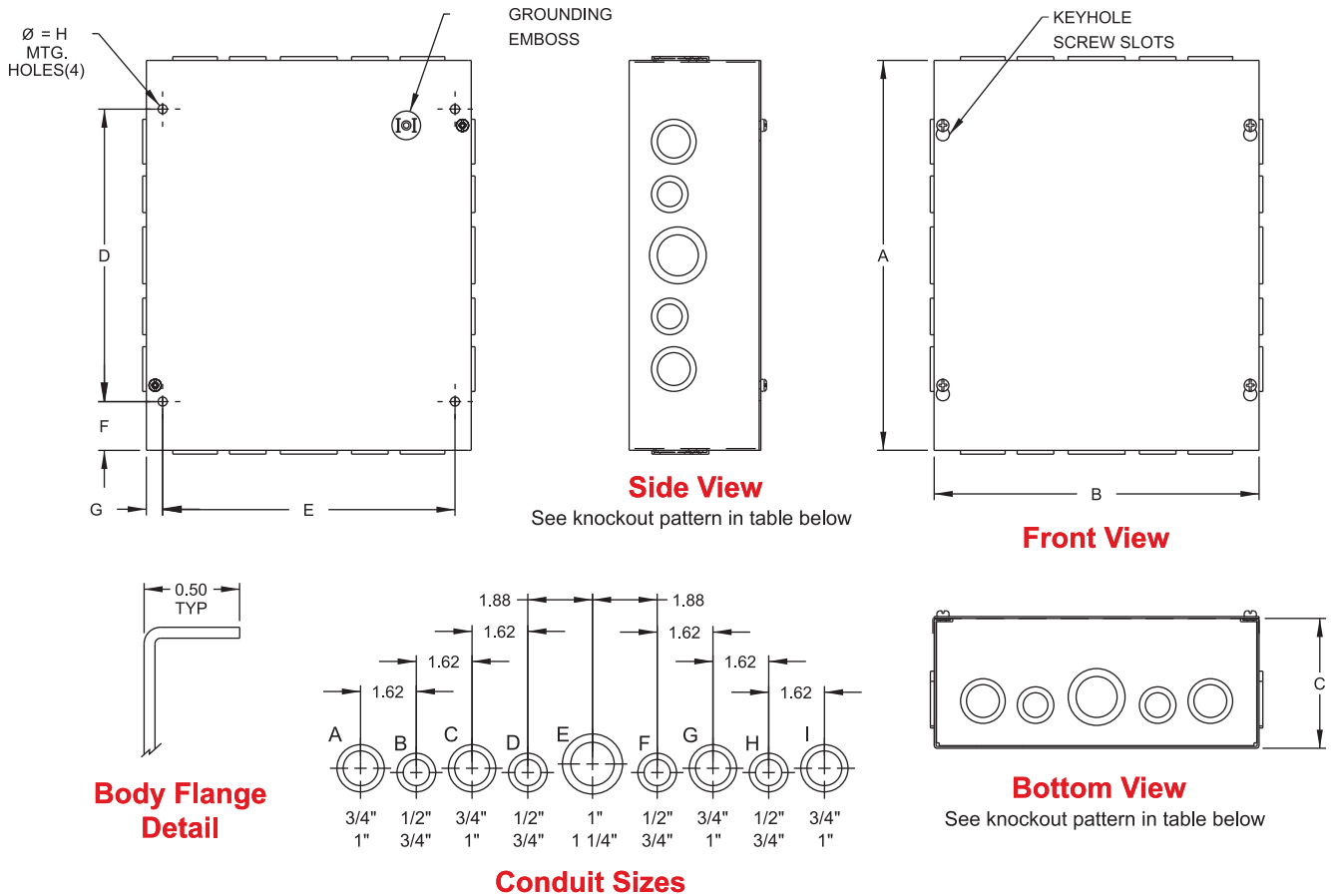
Junction Boxes

C-Box Screw Cover with Knockouts

NEMA 1

Commercial Enclosures

Junction Boxes



Part No.	Overall Dimensions			Mtg. Centers				Knockout Pattern Sides		Knockout Pattern Top & Bottom	Ship Wt. lbs.
	A	B	C	D	E	F	G	H			
CSKO666	6	6	6	3.00	5.00	1.50	0.50	B - C - D	0.28	B - C - D	4
CSKO886	8	8	6	5.00	7.00	1.50	0.50	F - G - H - I	0.28	F - G - H - I	6
CSKO1086	10	8	6	7.00	7.00	1.50	0.50	F - G - H - I	0.28	F - G - H - I	7
CSKO10106	10	10	6	7.00	9.00	1.50	0.50	F - G - H - I	0.28	C - D - E - F - G	8
CSKO12106	12	10	6	9.00	9.00	1.50	0.50	C - D - E - F - G	0.28	C - D - E - F - G	9
CSKO12126	12	12	6	9.00	11.00	1.50	0.50	C - D - E - F - G	0.28	C - D - E - F - G	10
CSKO16126	16	12	6	13.00	11.00	1.50	0.50	B - C - D - E - F - G - H	0.28	C - D - E - F - G	13
CSKO16166	16	16	6	13.00	15.00	1.50	0.50	B - C - D - E - F - G - H	0.28	B - C - D - E - F - G - H	16
CSKO18126	18	12	6	15.00	11.00	1.50	0.50	A - B - C - D - E - F - G - H - I	0.28	C - D - E - F - G	14
CSKO18186	18	18	6	15.00	17.00	1.50	0.50	A - B - C - D - E - F - G - H - I	0.28	A - B - C - D - E - F - G - H - I	19
CSKO24186	24	18	6	21.00	17.00	1.50	0.50	A - B - C - D - E - F - G - H - I	0.28	A - B - C - D - E - F - G - H - I	26
CSKO24246	24	24	6	21.00	22.50	1.50	0.75	A - B - C - D - E - F - G - H - I	0.44	A - B - C - D - E - F - G - H - I	37
CSKO30246	30	24	6	27.00	22.50	1.50	0.75	A - B - C - D - E - F - G - H - I	0.44	A - B - C - D - E - F - G - H - I	45
CSKO36246	36	24	6	33.00	22.50	1.50	0.75	A - B - C - D - E - F - G - H - I	0.44	A - B - C - D - E - F - G - H - I	57
CSKO12128	12	12	8	9.00	11.00	1.50	0.50	C - D - E - F - G	0.28	C - D - E - F - G	12
CSKO16168	16	16	8	13.00	15.00	1.50	0.50	B - C - D - E - F - G - H	0.28	B - C - D - E - F - G - H	20
CSKO24248	24	24	8	21.00	22.50	1.50	0.75	A - B - C - D - E - F - G - H - I	0.44	A - B - C - D - E - F - G - H - I	44
CSKO202010	20	20	10	17.00	19.00	1.50	0.75	A - B - C - D - E - F - G - H - I	0.28	A - B - C - D - E - F - G - H - I	37
CSKO242410	24	24	10	21.00	22.50	1.50	0.50	A - B - C - D - E - F - G - H - I	0.44	A - B - C - D - E - F - G - H - I	52
CSKO302010	30	20	10	27.00	18.50	1.50	0.75	A - B - C - D - E - F - G - H - I	0.44	A - B - C - D - E - F - G - H - I	59
CSKO362410	36	24	10	33.00	22.50	1.50	0.75	A - B - C - D - E - F - G - H - I	0.44	A - B - C - D - E - F - G - H - I	75

Technical references and CAD downloads available at www.hammondmfg.com All dimensions in inches unless specified otherwise

Quality Products. Service Excellence.

C-Box Screw Cover without Knockouts

NEMA 1


Commercial Enclosures


Application

- Designed for general purpose indoor commercial use as a junction, pull or switch box.

Standards

- UL-50 Type 1
- UL Type 1
- CSA Type 1
- **Complies with**
 - NEMA Type 1
 - IEC 60529, IP20

Construction

- Formed and spot welded from 16, 14 or 12 gauge steel depending on size.
- Flat steel covers fastened with plated steel screws.
- Keyhole slots permit cover to be lifted off without removing screws entirely.
- Through holes in back for wall mounting.
- Grounding location embossed in body.

Finish

- Enclosure and cover are finished in ANSI 61 gray powder coating.

Junction Boxes

Part No.	Overall Dimensions			Mtg. Centers					Ship Wt. lbs.
	A	B	C	D	E	F	G	H	
CS443	4	4	3	2.25	3.00	0.88	0.50	0.28	2
CS663	6	6	3	3.00	5.00	1.50	0.50	0.28	3
CS863	8	6	3	5.00	5.00	1.50	0.50	0.28	3
CS16143	16	14	3	13.00	13.00	1.50	0.50	0.28	12
CS18143	18	14	3	15.00	13.00	1.50	0.50	0.28	13
CS20143	20	14	3	17.00	13.00	1.50	0.50	0.28	13
CS444	4	4	4	2.25	3.00	0.88	0.50	0.28	2
CS644	6	4	4	3.00	3.00	1.50	0.50	0.28	3
CS664	6	6	4	3.00	5.00	1.50	0.50	0.28	3
CS864	8	6	4	5.00	5.00	1.50	0.50	0.28	5
CS884	8	8	4	5.00	7.00	1.50	0.50	0.28	5
CS1084	10	8	4	7.00	7.00	1.50	0.50	0.28	6
CS10104	10	10	4	7.00	9.00	1.50	0.50	0.28	6
CS1284	12	8	4	9.00	7.00	1.50	0.50	0.28	7
CS12104	12	10	4	9.00	9.00	1.50	0.50	0.28	8
CS12124	12	12	4	9.00	11.00	1.50	0.50	0.28	9
CS16124	16	12	4	13.00	11.00	1.50	0.50	0.28	12
CS18124	18	12	4	15.00	11.00	1.50	0.50	0.28	12
CS18184	18	18	4	15.00	17.00	1.50	0.50	0.28	16
CS24244	24	24	4	21.00	23.00	1.50	0.50	0.28	33
CS666	6	6	6	3.00	5.00	1.50	0.50	0.28	4
CS886	8	8	6	5.00	7.00	1.50	0.50	0.28	6

Chart continued on next page....

Technical references and CAD downloads available at www.hammondmfg.com

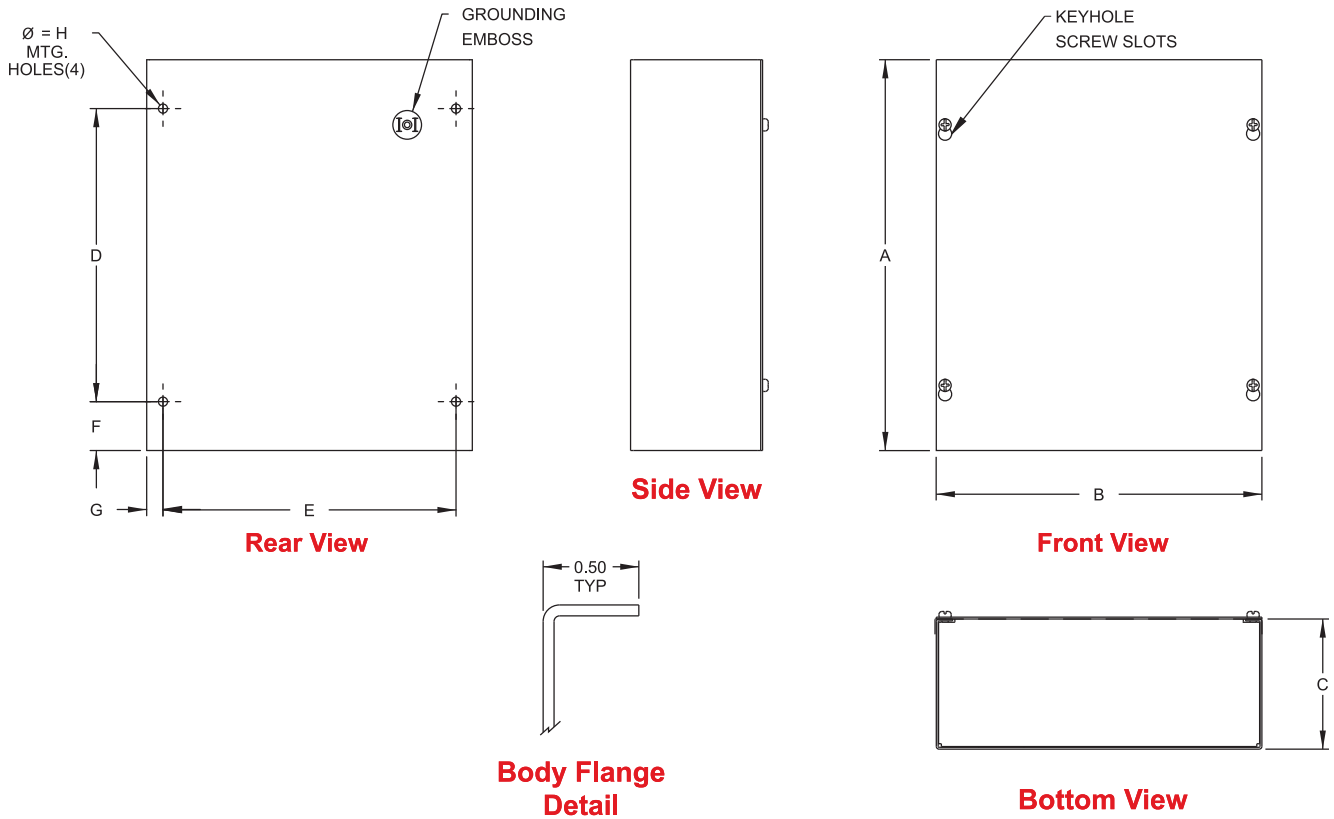
All dimensions in inches unless specified otherwise

C-Box Screw Cover without Knockouts

NEMA 1

Commercial Enclosures

Junction Boxes



Part No.	Overall Dimensions			Mtg. Centers				Ship Wt. lbs.	
	A	B	C	D	E	F	G		H
CS1086	10	8	6	7.00	7.00	1.50	0.50	0.28	7
CS10106	10	10	6	7.00	9.00	1.50	0.50	0.28	8
CS12106	12	10	6	9.00	9.00	1.50	0.50	0.28	8
CS12126	12	12	6	9.00	11.00	1.50	0.50	0.28	9
CS16126	16	12	6	13.00	11.00	1.50	0.50	0.28	13
CS16166	16	16	6	13.00	15.00	1.50	0.50	0.28	16
CS18126	18	12	6	15.00	11.00	1.50	0.50	0.28	14
CS18186	18	18	6	15.00	17.00	1.50	0.50	0.28	19
CS24186	24	18	6	21.00	17.00	1.50	0.50	0.28	26
CS24246	24	24	6	21.00	22.50	1.50	0.75	0.44	37
CS30246	30	24	6	27.00	22.50	1.50	0.75	0.44	45
CS36246	36	24	6	33.00	22.50	1.50	0.75	0.44	57
CS36366	36	36	6	33.00	34.50	1.50	0.75	0.44	70
CS12128	12	12	8	9.00	11.00	1.50	0.50	0.28	12
CS16168	16	16	8	13.00	15.00	1.50	0.50	0.28	18
CS18188	18	18	8	15.00	17.00	1.50	0.50	0.28	21
CS24248	24	24	8	21.00	22.50	1.50	0.75	0.44	42
CS36248	36	24	8	33.00	22.50	1.50	0.75	0.44	65
CS202010	20	20	10	17.00	19.00	1.50	0.75	0.44	35
CS242410	24	24	10	21.00	22.50	1.50	0.50	0.28	49
CS302010	30	20	10	27.00	18.50	1.50	0.75	0.44	55
CS362410	36	24	10	33.00	22.50	1.50	0.75	0.44	70
CS363612	36	36	12	33.00	34.50	1.50	0.75	0.44	88

 Technical references and CAD downloads available at www.hammondmfg.com

All dimensions in inches unless specified otherwise

Quality Products. Service Excellence.

C-Box Hinged Cover with Knockouts

NEMA 1


Commercial Enclosures

Application

- Designed for general purpose indoor commercial use as a junction, pull or switch box.
- Hinged cover with latch provides easy access during installation and maintenance.

Standards

- UL-50 Type 1
- CSA Type 1
- **Complies with**
 - NEMA Type 1
 - IEC 60529, IP30

Construction

- Formed and spot welded from 16 or 14 gauge steel depending on size.
- Formed steel covers close by use of slotted quarter turn latch.
- Full swing door using butt hinges.
- Easily removed knockouts on all 4 sides (see drawings for sizes and locations).
- Through holes in back for wall mounting.
- Grounding location embossed in body.

Finish

- Enclosure and cover are finished in ANSI 61 gray powder coating.

Accessories

- N1JLK Lock Kit...see page **431**

Junction Boxes

Part No.	Overall Dimensions			Meeting Centers		Knockout Pattern Sides				Knockout Pattern Top & Bottom	Ship Wt. lbs.
	A	B	C	D	E	F	G				
CHKO663	6	6	3.5	3.00	5.00	0.50	0.28	B - C - D	B - C - D	3	
CHKO644	6	4	4	3.00	3.00	0.50	0.28	B - C - D	A - B	3	
CHKO664	6	6	4	3.00	5.00	0.50	0.28	B - C - D	B - C - D	3	
CHKO864	8	6	4	5.00	5.00	0.50	0.28	F - G - H - I	B - C - D	4	
CHKO884	8	8	4	5.00	7.00	0.50	0.28	F - G - H - I	F - G - H - I	5	
CHKO1084	10	8	4	7.00	7.00	0.50	0.28	F - G - H - I	F - G - H - I	6	
CHKO10104	10	10	4	7.00	9.00	0.50	0.28	F - G - H - I	C - D - E - F - G	7	
CHKO1284	12	8	4	9.00	7.00	0.50	0.28	C - D - E - F - G	F - G - H - I	8	
CHKO12104	12	10	4	9.00	9.00	0.50	0.28	C - D - E - F - G	C - D - E - F - G	8	
CHKO12124	12	12	4	9.00	11.00	0.50	0.28	C - D - E - F - G	C - D - E - F - G	9	
CHKO16124	16	12	4	13.00	11.00	0.50	0.28	B - C - D - E - F - G - H	C - D - E - F - G	12	
CHKO18124	18	12	4	15.00	11.00	0.50	0.28	A - B - C - D - E - F - G - H - I	C - D - E - F - G	12	
CHKO666	6	6	6	3.00	5.00	0.50	0.28	B - C - D	B - C - D	4	
CHKO886	8	8	6	5.00	7.00	0.50	0.28	F - G - H - I	F - G - H - I	6	
CHKO1086	10	8	6	7.00	7.00	0.50	0.28	F - G - H - I	F - G - H - I	7	

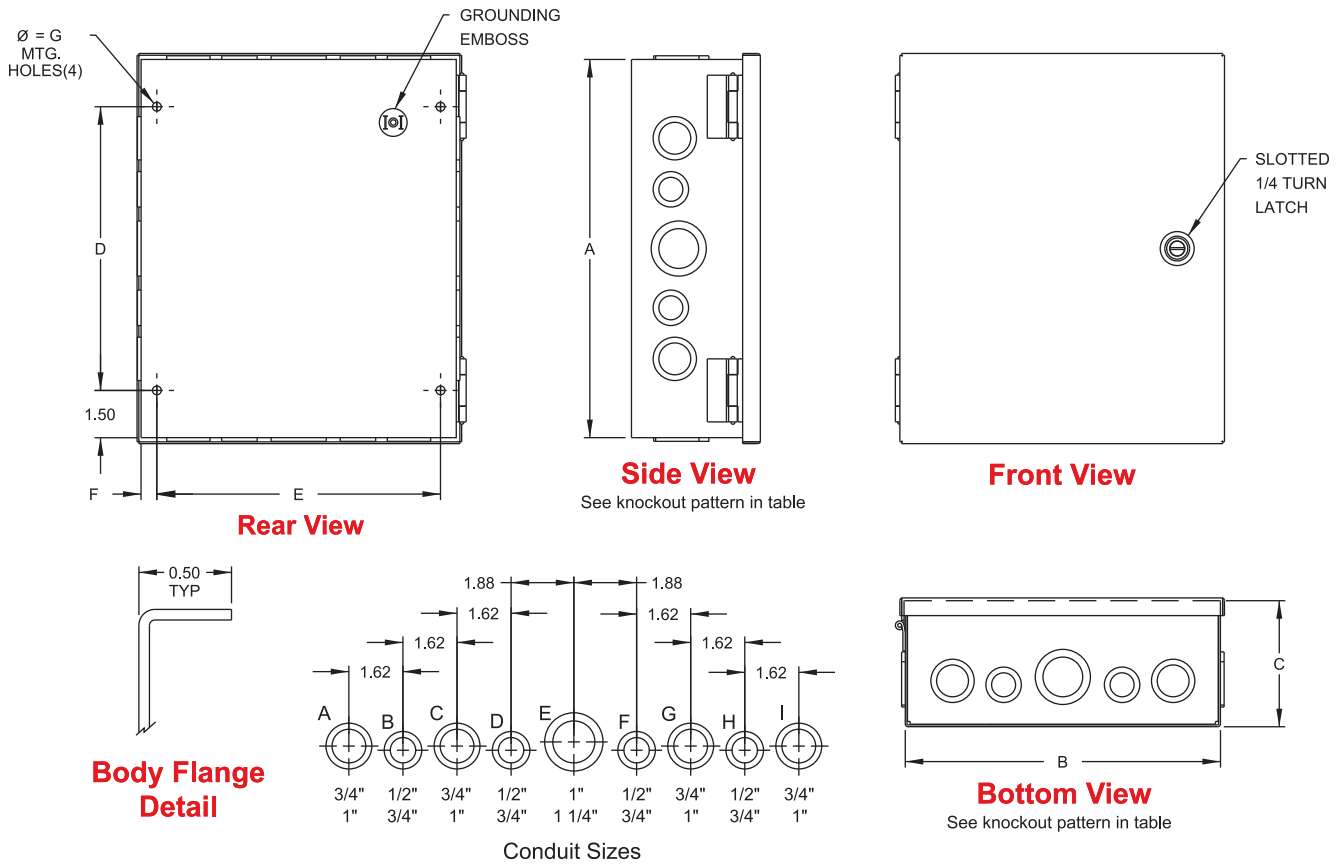
Chart continued on next page....

C-Box Hinged Cover with Knockouts

NEMA 1

Commercial Enclosures

Junction Boxes



Part No.	Overall Dimensions			Meeting Centers		Knockout Pattern Sides		Knockout Pattern Top & Bottom		Ship Wt. lbs.
	A	B	C	D	E	F	G			
CHKO10106	10	10	6	7.00	9.00	0.50	0.28	F - G - H - I	C - D - E - F - G	8
CHKO12106	12	10	6	9.00	9.00	0.50	0.28	C - D - E - F - G	C - D - E - F - G	8
CHKO12126	12	12	6	9.00	11.00	0.50	0.28	C - D - E - F - G	C - D - E - F - G	10
CHKO16126	16	12	6	13.00	11.00	0.50	0.28	B - C - D - E - F - G - H	C - D - E - F - G	13
CHKO16166	16	16	6	13.00	15.00	0.50	0.28	B - C - D - E - F - G - H	B - C - D - E - F - G - H	14
CHKO18126	18	12	6	15.00	11.00	0.50	0.28	A - B - C - D - E - F - G - H - I	C - D - E - F - G	14
CHKO18186	18	18	6	15.00	17.00	0.50	0.28	A - B - C - D - E - F - G - H - I	A - B - C - D - E - F - G - H - I	20
CHKO24186	24	18	6	21.00	17.00	0.50	0.28	A - B - C - D - E - F - G - H - I	A - B - C - D - E - F - G - H - I	24
CHKO24246	24	24	6	21.00	22.50	0.75	0.44	A - B - C - D - E - F - G - H - I	A - B - C - D - E - F - G - H - I	40
CHKO30246	30	24	6	27.00	22.50	0.75	0.44	A - B - C - D - E - F - G - H - I	A - B - C - D - E - F - G - H - I	49
CHKO36246	36	24	6	33.00	22.50	0.75	0.44	A - B - C - D - E - F - G - H - I	A - B - C - D - E - F - G - H - I	57
CHKO36248	36	24	8	33.00	22.50	0.75	0.44	A - B - C - D - E - F - G - H - I	A - B - C - D - E - F - G - H - I	60

Splitter Boxes

NEMA 1



Commercial Enclosures



Application

- The splitter boxes are designed for indoor distribution of up to 600 V (max) service using either 3 or 4 wires.

Construction

- Formed and spot welded from 14 or 16 gauge steel.
- Factory installed splitter blocks.
- Series of knockouts on each side.
- Padlocking hasp.

Finish

- Enclosure and cover are finished in ANSI 61 gray powder coating.

Standards

- CSA Type 1
- **Complies with**
 - IEC 60529, IP20

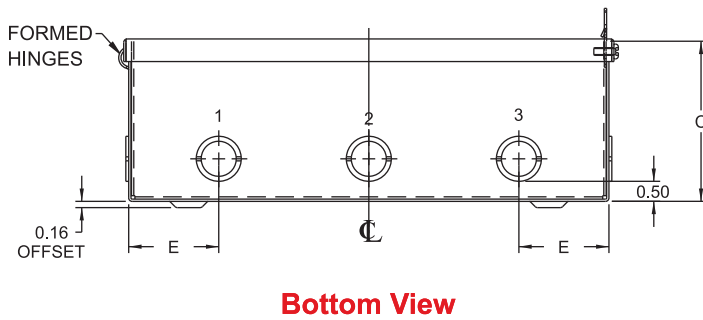
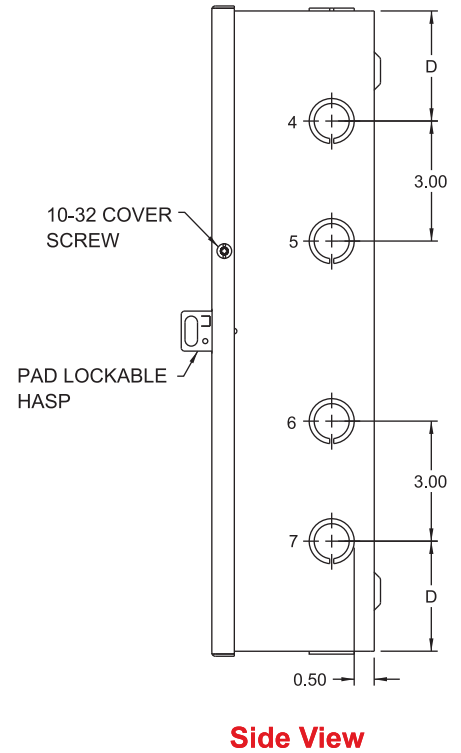
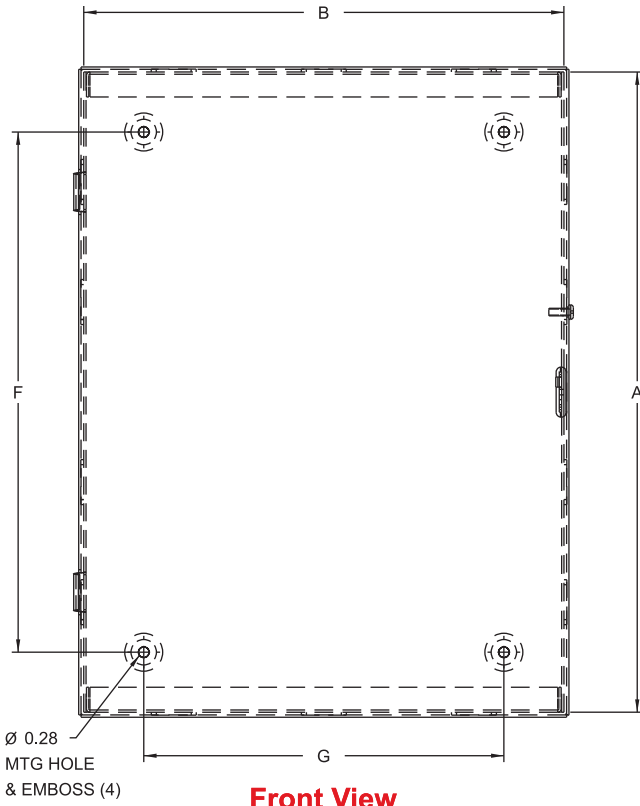
Splitter Boxes

3 Wire	Part Number		CU/AL	Dimensions			Ship Wt.
	4 Wire	Less Blocks	Amps	H	W	D	lbs
CSB73	CSB74	CSB70	70/70	12	10	4	9
CSB103	CSB104	CSB100	125/120	15	10	4	10
CSB203	CSB204	CSB200	225/225	18	12	5	16
CSB403	CSB404	CSB400	400/340	24	17	6	37
CSB603*	CSB604*	CSB600*	600/574	30	24	7	63

* 14 gauge steel

Splitter Boxes

NEMA 1



NOTE: KNOCKOUTS TYPICAL ON OPPOSITE SIDES

Commercial Enclosures

Splitter Boxes

3 Wire	Part Number			Optional Grounding Kit	CU/AL Amps	Dimensions				Conduit Size (Location)				
	4 Wire	Less Blocks				A	B	C	D	E	F	G	1/2"-3/4"	3/4"-1"
CSB73	CSB74	CSB70	CGK125	70/70	12	10	4	2.75	2.25	9.00	7.00	1,3,7	2,4	-
CSB103	CSB104	CSB100	CGK125	125/120	15	10	4	2.75	2.25	12.00	7.00	1,3,7	2,4	-
CSB203	CSB204	CSB200	CGK225	225/225	18	12	5	3.00	3.50	15.00	9.00	1,3,7	4	1,3
CSB403	CSB404	CSB400	CGK400	400/340	24	17	6	3.31	4.88	21.00	14.00	-	-	-
CSB603*	CSB604*	CSB600*	CGK600	600/574	30	24	7	4.00	5.00	27.00	21.00	-	-	-

* 14 gauge steel

Splitter Boxes

NEMA 3R, 12, 4

**Inner
Panel
Included**



Commercial Enclosures

Application

- The splitter boxes are designed for distribution of up to 600 V (max) service using either 3 or 4 wires.

Standards

- CSA Type 3R, 12, 4
- **Complies with**
 - IEC 60529, IP66

Construction

- Formed 14 and 16 gauge steel.
- Factory installed splitter blocks.
- Smooth, continuously welded seams ground smooth.
- Door stiffeners are provided where required for increased strength and rigidity - designed to also permit additional mounting options.
- Formed lip on enclosure to exclude flowing liquids and contaminants.
- Door latches feature the added safety of quarter turn slot requiring use of tool for opening.
- Doors may be easily removed for modifications and are interchangeable.
- Seamless poured-in place gasket.
- Collar studs provided for mounting inner panel.
- Includes hardware kit with panel mounting nuts and sealing washers for wall mounting holes.
- Hinges are constructed from 304 stainless steel.
- Hinge pins are stainless steel.
- Inner panel is included.

Finish

- Cover and enclosure are finished in recoatable smooth ANSI 61 gray powder coating.
- Inner panel is finished in white powder coating.

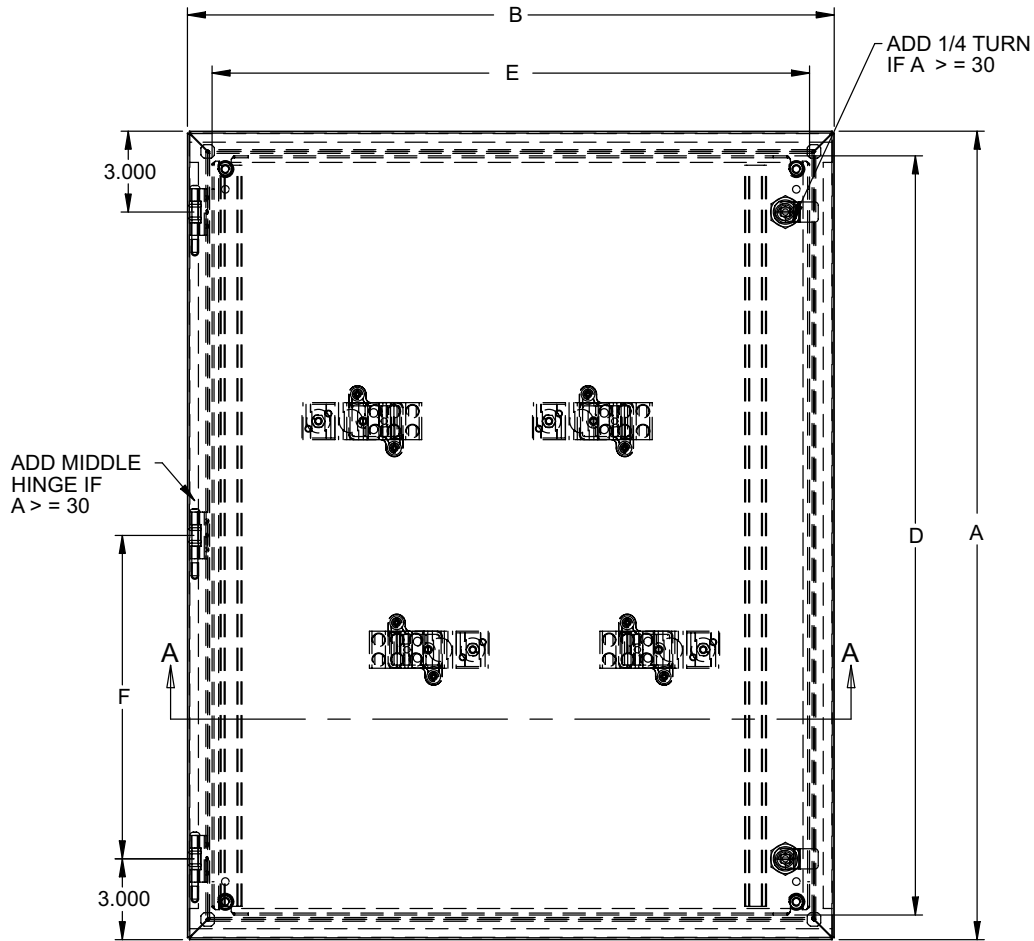
Accessories

- Quarter turn inserts and keys
...see page **31**
- Mounting foot kit...see page **31**
- Rear hole plugs...see page **32**
- Replacement hinge pins...see page **29**
- Replacement quarter turn assemblies...see page **31**
- Touch up paint...see page **455**
- Padlock adaptor...see page **434**

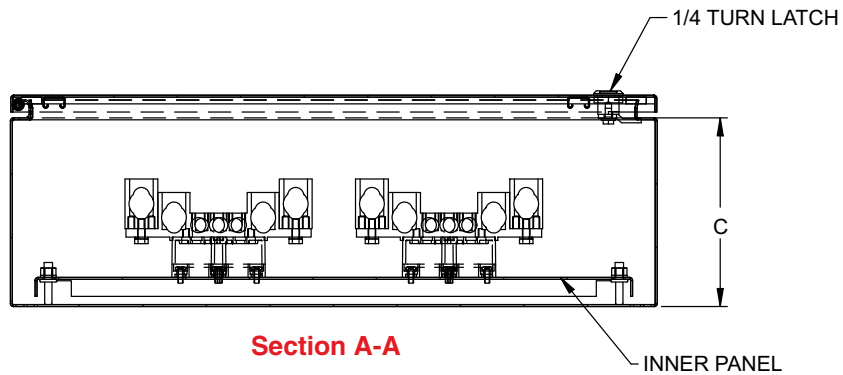
Splitter Boxes

Splitter Boxes

NEMA 3R, 12, 4



Front View



Section A-A

Part Number		Door/Body Gauge	Optional Grounding Kit	CU/AL Amps	Dimensions						# of Latches	# of Hinges
3 Wire	4 Wire				A	B	C	D	E	F		
CN4SB73	CN4SB74	16	CGK125	70/70	12	10	5	10.17	8.17	N/A	1	2
CN4SB103	CN4SB104	16	CGK125	125/120	15	10	5	13.17	8.17	N/A	1	2
CN4SB203	CN4SB204	16	CGK225	225/225	18	12	5	16.17	10.17	N/A	1	2
CN4SB403	CN4SB404	16	CGK400	400/340	24	17	6	22.17	15.17	N/A	1	2
CN4SB603	CN4SB604	14	CGK600	600/574	30	24	7	28.17	22.17	12.00	2	3

* 14 gauge steel

Technical references and CAD downloads available at www.hammondmfg.com

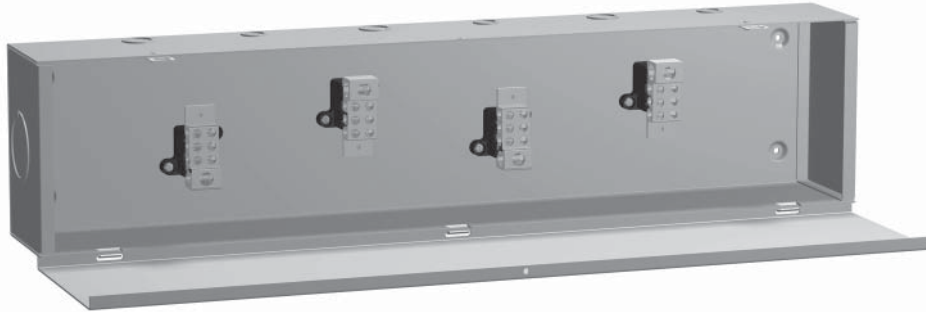
All dimensions in inches unless specified otherwise

Commercial Enclosures

Splitter Boxes

Splitter Troughs

NEMA 1


Commercial Enclosures

Application

- The splitter troughs are designed for distribution of up to 600 V (max) service using either 3 or 4 wires.

Standards

- CSA Certified
- **Complies with**
 - IEC 60529, IP20

Construction

- Formed and spot welded from 14 or 16 gauge steel.
- Factory installed splitter blocks.
- Series of knockouts on each side.
- Padlocking hasp.

Finish

- Cover and enclosure are finished in recoatable smooth ANSI 61 gray powder coating.

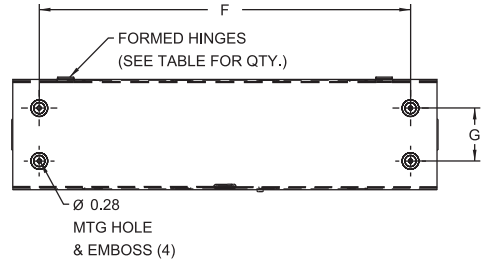
3 Wire	Part Number		CU/AL Amps	Dimensions			Ship Wt.lbs
	4 Wire	Less Blocks		H	W	D	
CST273	CST274	-	70/70	24	6	4	12
CST373	CST374	-	70/70	36	6	4	17
CST473	CST474	-	70/70	48	6	4	21
CST2103	CST2104	CST2100	125/120	24	6	4	12
CST3103	CST3104	CST3100	125/120	36	6	4	17
CST4103	CST4104	CST4100	125/120	48	6	4	21
CST6103*	CST6104*	CST6100	125/120	72	8	5	39
CST2203*	-	CST2200	225/225	24	8	5	16
CST3203*	CST3204*	CST3200*	225/225	36	8	5	22
CST4203*	CST4204*	CST4200*	225/225	48	8	5	27
CST5203*	CST5204*	CST5200*	225/225	60	8	5	33
CST6203*	CST6204*	-	225/225	72	8	5	39
CST3403*	-	CST3400*	400/340	36	10	6	35
CST4403*	CST4404*	CST4400*	400/340	48	10	6	45
CST5403*	CST5404*	CST5400*	400/340	60	10	6	58
CST6403*	CST6404*	CST6400*	400/340	72	10	6	62
CST4603*	CST4604*	-	600/574	48	10	6	45
CST5603*	CST5604*	-	600/574	60	10	6	58
CST6603*	CST6604*	-	600/574	72	10	6	62

* 14 gauge steel

Splitter Trough

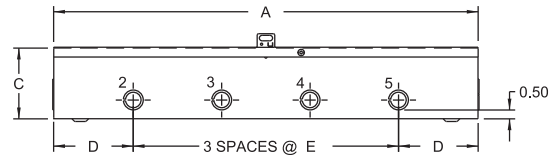
Splitter Troughs

NEMA 1

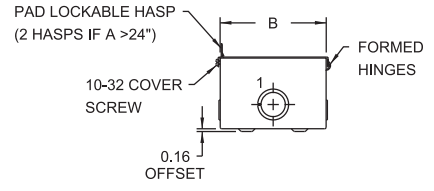


Top View

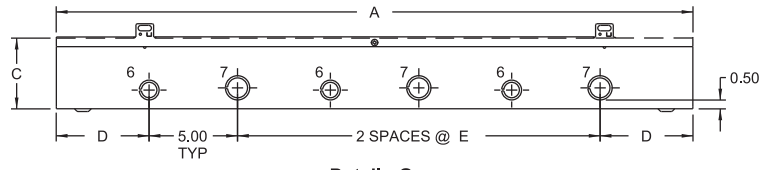
NOTE: KNOCKOUTS TYPICAL ON OPPOSITE SIDES



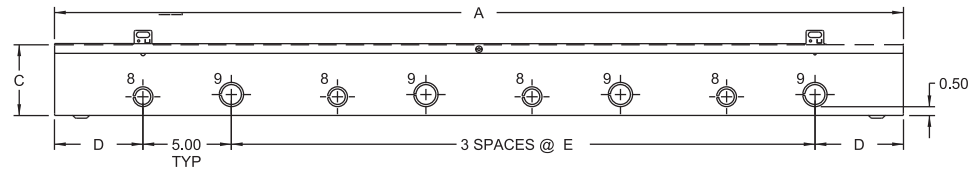
Detail - F



End View



Detail - G



Detail - H

3 Wire	Part Number		Optional Less Blocks Grounding Kit	CU/AL Amps	Dimensions							Conduit Size (Location)				
	4 Wire				A	B	C	D	E	F	G	Detail	1/2"-3/4"	3/4"-1"	1"-1 1/4"	2"-2 1/2"
CST273	CST274	-	CGK225	70/70	24	6	4	4.50	5.00	21.00	3.00	F	2,3,4,5	-	1	-
CST373	CST374	-	CGK225	70/70	36	6	4	7.50	7.00	33.00	3.00	F	2,3,4,5	-	1	-
CST473	CST474	-	CGK225	70/70	48	6	4	7.50	11.00	45.00	3.00	F	2,3,4,5	-	1	-
CST2103	CST2104	CST2100	CGK225	125/120	24	6	4	4.50	5.00	21.00	3.00	F	2,3,4,5	-	1	-
CST3103	CST3104	CST3100	CGK225	125/120	36	6	4	7.50	7.00	33.00	3.00	F	2,3,4,5	-	1	-
CST4103	CST4104	CST4100	CGK225	125/120	48	6	4	7.50	11.00	45.00	3.00	F	2,3,4,5	-	1	-
CST6103*	CST6104*	CST6100	CGK225	125/120	72	8	5	5.25	10.25	69.00	5.00	H	8	9	1	-
CST2203*	-	CST2200	CGK225	225/225	24	8	5	4.50	5.00	21.00	5.00	F	2,4	3,5	-	1
CST3203*	CST3204*	CST3200*	CGK225	225/225	36	8	5	5.25	10.25	33.00	5.00	G	6	7	-	1
CST4203*	CST4204*	CST4200*	CGK225	225/225	48	8	5	5.00	11.00	45.00	5.00	H	8	9	-	1
CST5203*	CST5204*	CST5200*	CGK225	225/225	60	8	5	5.00	15.00	57.00	5.00	H	8	9	-	1
CST6203*	CST6204*	-	CGK225	225/225	72	8	5	5.00	19.00	69.00	5.00	H	8	9	-	1
CST3403*	-	CST3400*	CGK400	400/340	36	10	6	5.25	10.25	33.00	7.00	G	6	7	-	-
CST4403*	CST4404*	CST4400*	CGK400	400/340	48	10	6	5.00	11.00	45.00	7.00	H	8	9	-	-
CST5403*	CST5404*	CST5400*	CGK400	400/340	60	10	6	5.00	15.00	57.00	7.00	H	8	9	-	-
CST6403*	CST6404*	CST6400*	CGK400	400/340	72	10	6	5.00	19.00	69.00	7.00	H	8	9	-	-
CST4603*	CST4604*	-	CGK400	600/574	48	10	6	5.00	11.00	45.00	7.00	H	8	9	-	-
CST5603*	CST5604*	-	CGK400	600/574	60	10	6	5.00	15.00	57.00	7.00	H	8	9	-	-
CST6603*	CST6604*	-	CGK400	600/574	72	10	6	5.00	19.00	69.00	7.00	H	8	9	-	-

* 14 gauge steel

Technical references and CAD downloads available at www.hammondmfg.com

All dimensions in inches unless specified otherwise

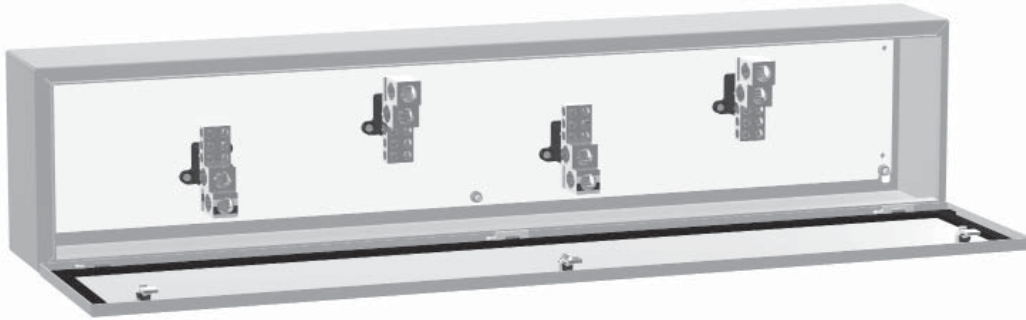
Quality Products. Service Excellence.

Commercial Enclosures

Splitter Trough

Splitter Troughs

NEMA 3R, 12, 4



**Inner
Panel
Included**



Commercial Enclosures

Application

- The splitter troughs are designed for distribution of up to 600 V (max) service using either 3 or 4 wires.

Standards

- CSA Certified Type 3R, 12, 4
- **Complies with**
 - IEC 60529, IP66

Construction

- Formed 14 and 16 gauge steel.
- Factory installed splitter blocks.
- Smooth, continuously welded seams ground smooth.
- Door stiffeners are provided where required for increased strength and rigidity - designed to also permit additional mounting options.
- Formed lip on enclosure to exclude flowing liquids and contaminants.
- Door latches feature the added safety of quarter turn slot requiring use of tool for opening.
- Doors may be easily removed for modifications and are interchangeable.
- Seamless poured-in place gasket.
- Collar studs provided for mounting inner panel.
- Includes hardware kit with panel mounting nuts and sealing washers for wall mounting holes.
- Hinges are constructed from 304 stainless steel.
- Hinge pins are stainless steel.
- Inner panel is included.

Finish

- Cover and enclosure are finished in recoatable smooth ANSI 61 gray powder coating.
- Inner panel is finished in white powder coating.

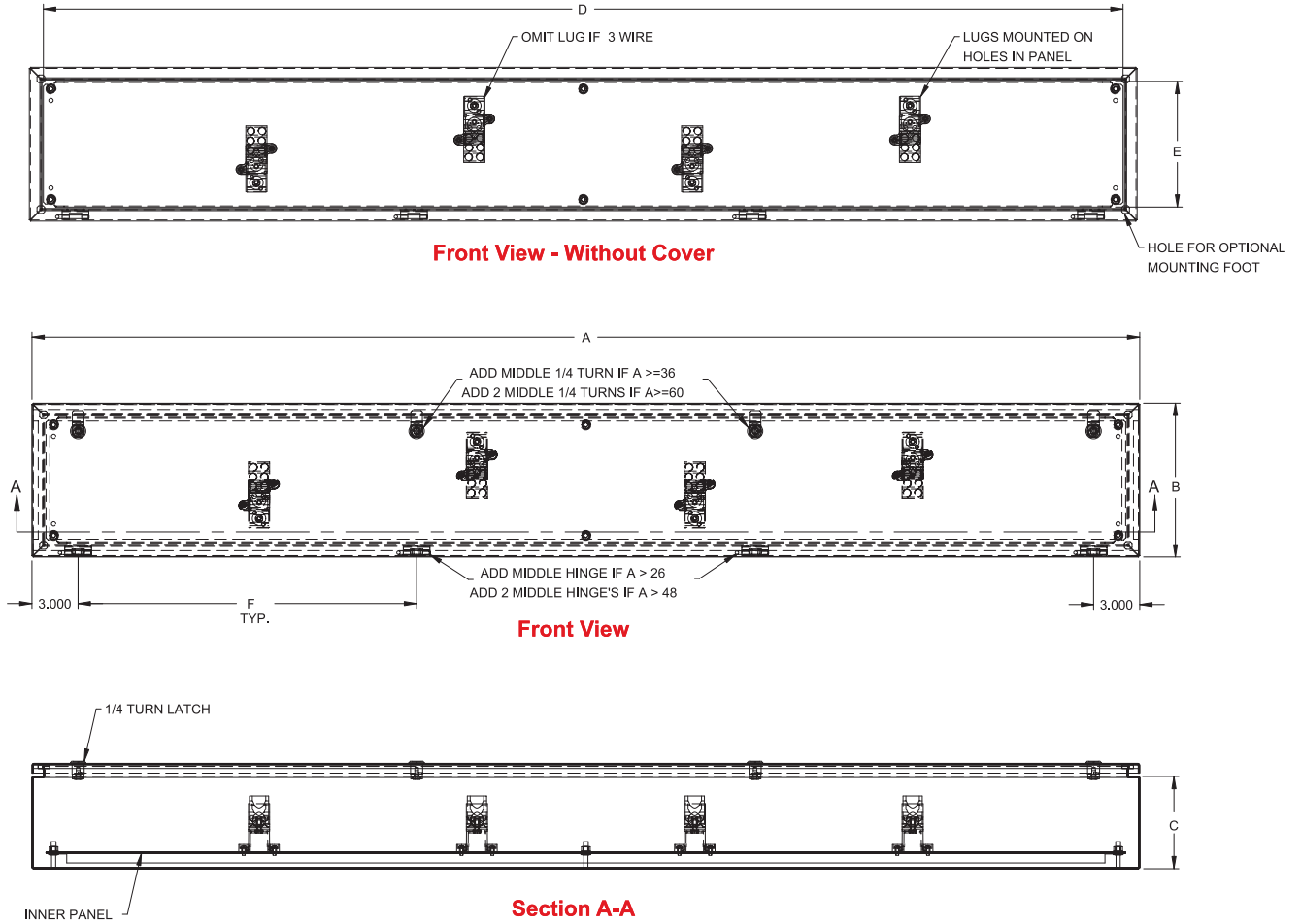
Accessories

- Quarter turn inserts and keys
...see page **31**
- Mounting foot kit...see page **31**
- Rear hole plugs...see page **32**
- Replacement hinge pins...see page **29**
- Replacement quarter turn assemblies...see page **31**
- Touch up paint...see page **455**
- Padlock adaptor...see page **434**

Splitter Trough

Splitter Troughs

NEMA 3R, 12, 4



Commercial Enclosures

Splitter Trough

Part Number		Gauge	Optional Grounding Kit	CU/AL Amps	Dimensions			D	E	F	# Latches	# Hinges
3 Wire	4 Wire				A	B	C					
CN4ST273	CN4ST274	16	CGK225	70/70	24	6	5	22.17	4.17	N/A	2	2
CN4ST373	CN4ST374	16	CGK225	70/70	36	6	5	34.17	4.17	15	2	3
CN4ST473	CN4ST474	16	CGK225	70/70	48	6	5	46.17	4.17	15	3	3
CN4ST2103	CN4ST2104	16	CGK225	125/120	24	6	5	22.17	4.17	N/A	2	2
CN4ST3103	CN4ST3104	16	CGK225	125/120	36	6	5	34.17	4.17	15	2	3
CN4ST4103	CN4ST4104	16	CGK225	125/120	48	6	5	46.17	4.17	21	3	3
CN4ST6103	CN4ST6104	14	CGK225	125/120	72	8	6	70.17	6.17	21	4	4
CN4ST2203	-	14	CGK225	225/225	24	8	5	22.17	6.17	N/A	2	2
CN4ST3203	CN4ST3204	14	CGK225	225/225	36	8	6	34.17	6.17	15	2	3
CN4ST4203	CN4ST4204	14	CGK225	225/225	48	8	6	46.17	6.17	21	3	3
CN4ST5203	CN4ST5204	14	CGK225	225/225	60	8	6	58.17	6.17	18	4	4
CN4ST6203	CN4ST6204	14	CGK225	225/225	72	8	6	70.17	6.17	22	4	4
CN4ST3403	-	14	CGK400	400/340	36	10	6	34.17	8.17	15	2	3
CN4ST4403	CN4ST4404	14	CGK400	400/340	48	10	6	46.17	8.17	21	3	3
CN4ST5403	CN4ST5404	14	CGK400	400/340	60	10	6	58.17	8.17	21	4	4
CN4ST6403	CN4ST6404	14	CGK400	400/340	72	10	6	70.17	8.17	22	4	4
CN4ST4603	CN4ST4604	14	CGK400	600/574	48	10	6	46.17	8.17	21	3	3
CN4ST5603	CN4ST5604	14	CGK400	600/574	60	10	6	58.17	8.17	18	4	4
CN4ST6603	CN4ST6604	14	CGK400	600/574	72	10	6	70.17	8.17	22	4	4

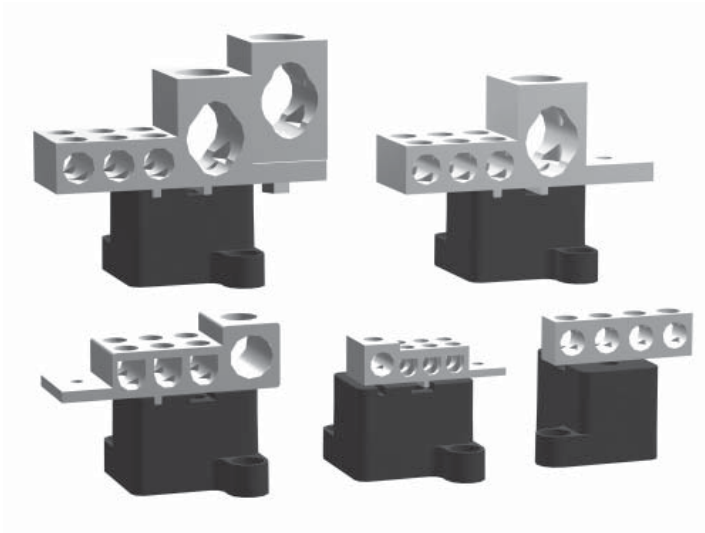
Technical references and CAD downloads available at www.hammondmfg.com All dimensions in inches unless specified otherwise

Quality Products. Service Excellence.

Splitter Blocks



Commercial Enclosures



Application

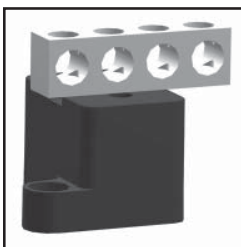
- These blocks are used in Hammond standard splitter troughs and boxes.
- The design includes the main and branch lugs which can use either copper or aluminum conductors.
- All blocks are rated 600 V.

Standards

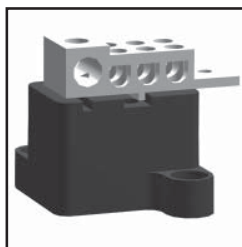
- CSA Certified

Construction

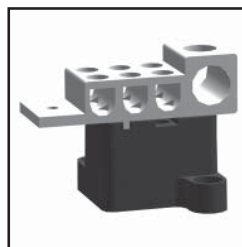
- Cu-Al monopiece connectors are secured to insulators.
- Each block includes a main lug and branch lugs.



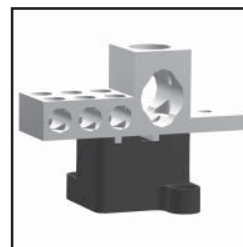
CSBL125B



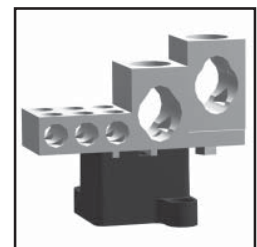
CSBL125T



CSBL225



CSBL400



CSBL600

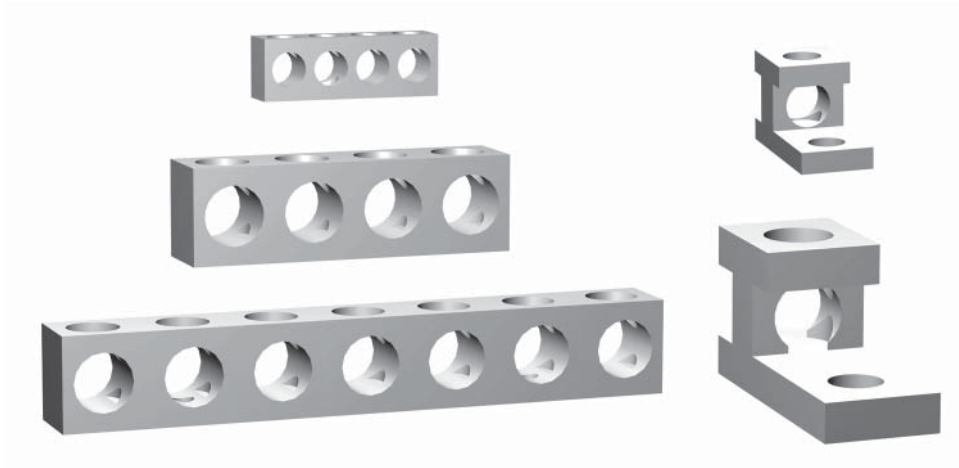
Splitter Boxes

Part No.	Main Lug Ampacity	Max./Min. Wire Capacity	Branch Lugs Ampacity	Max./Min. Wire Capacity	Ship Wt lbs
CSBL125B	125	1/0 - 14	3/70	3 x (2-14)	1
CSBL125T	125	1/0 - 14	6/70	6 x (2-14)	1
CSBL225	225	300MCM - 6	6/125	6 x (2/0-14)	1
CSBL400	400	600MCM - 4 or 2 (x) 250 MCM - 1/0	6/200	6 x (3/0 - 14)	1
CSBL600	600	(2x) 600MCM - 4 or (4x) 250MCM - 1/0	6/200	6 x (3/0-14)	1

Technical references and CAD downloads available at www.hammondmfg.com

All dimensions in inches unless specified otherwise

Grounding Kits



Commercial Enclosures

Application

- Designed for use with aluminum and copper conductors.

Standards

- CSA Certified

Construction

- Lugs are constructed from high strength, high conductive aluminum alloy 6061-T6, rated at 90°C
- Kits are supplied with all necessary mounting hardware.



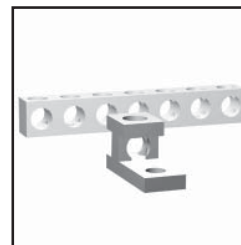
CGK125



CGK225



CGK400



CGK600



CGK

Splitter Boxes

Part No.	Application	Number of Circuits and Wire Sizes
CGK125	Splitter Box 70 A, 125 A	4 x (2-14 CU-AL)
CGK225	Splitter Box 225 A/Trough 70 A, 125A, 225 A	7 x (2-14 CU-AL)
CGK400	Splitter Box/Trough 400 A	7 x (2-14 CU-AL) & 1 x (1/0-14 CU-AL)
CGK600	Splitter Box/Trough 600 A	7 x (2-14 CU-AL) & 1 x (300 MCM - 6 CU-AL)
CGK	Junction/Pull Box	3 x (4-14 CU-AL)

Metering Cabinets

NEMA 1

Commercial Enclosures



**Inner
Panel
Included**



Application

- Designed for indoor housing of metering transformers.

Standards

- CSA Type 1
- **Complies with**
 - IEC 60529, IP20

Construction

- Formed and spot welded from 14 or 16 gauge steel.
- Spot welded construction and formed edges.
- Removable inner panel.
- Hinged covers.
- 2 cutouts in top of each cabinet with metering plates included.

Finish

- Enclosure and cover are finished in ANSI 61 gray inside and out.
- Inner panel is finished in white powder coating

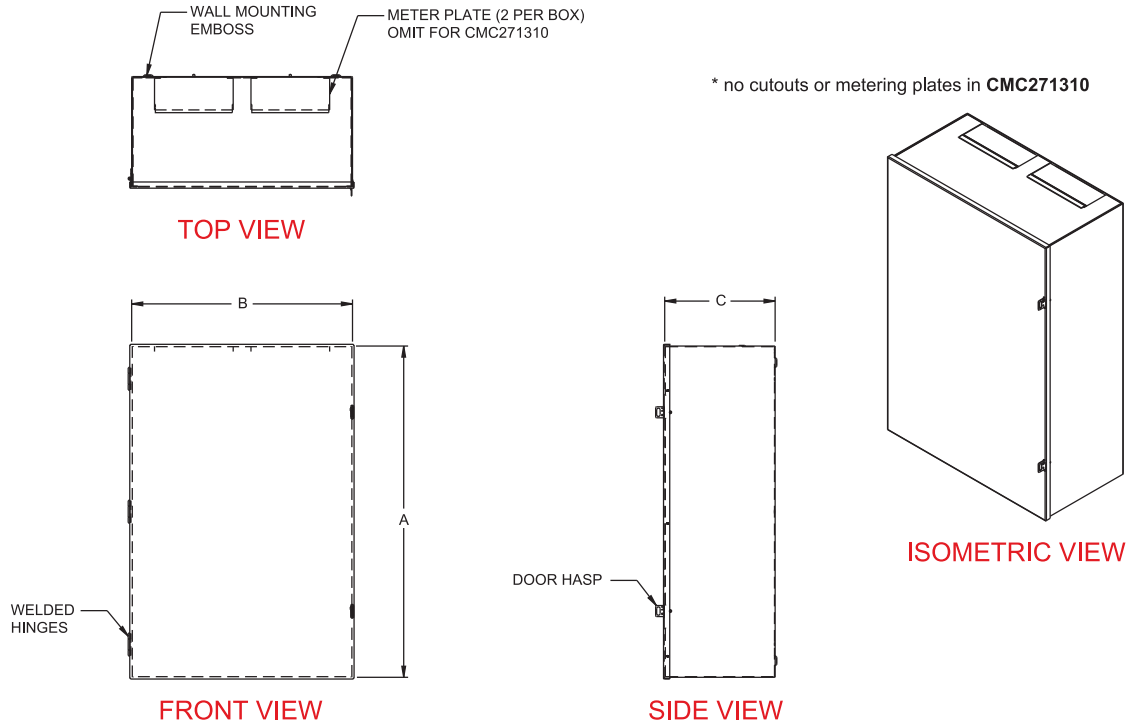
Metering Cabinets

Part No.	Dimensions			Panel Dimensions	Type of Door	Latch Type	Latch Qty	Metering Plates	Ship Wt. lbs.
	A	B	C						
CMC202010	20	20	10	16 x 16	Single	Hasp	2	2	42
CMC271310*	27	13	10	23 x 9	Single	Hasp	2	0	38
CMC302010	30	20	10	26 x 16	Single	Hasp	2	2	69
CMC303010	30	30	10	26 x 26	Double	2 Hasp + Quarter Turn	3	2	92
CMC363612	36	36	12	32 x 32	Double	2 Hasp + Quarter Turn	3	2	131
CMC484812	48	48	12	44 x 44	Double	2 Hasp + Quarter Turn	3	2	210

* no cutouts in top or metering plates

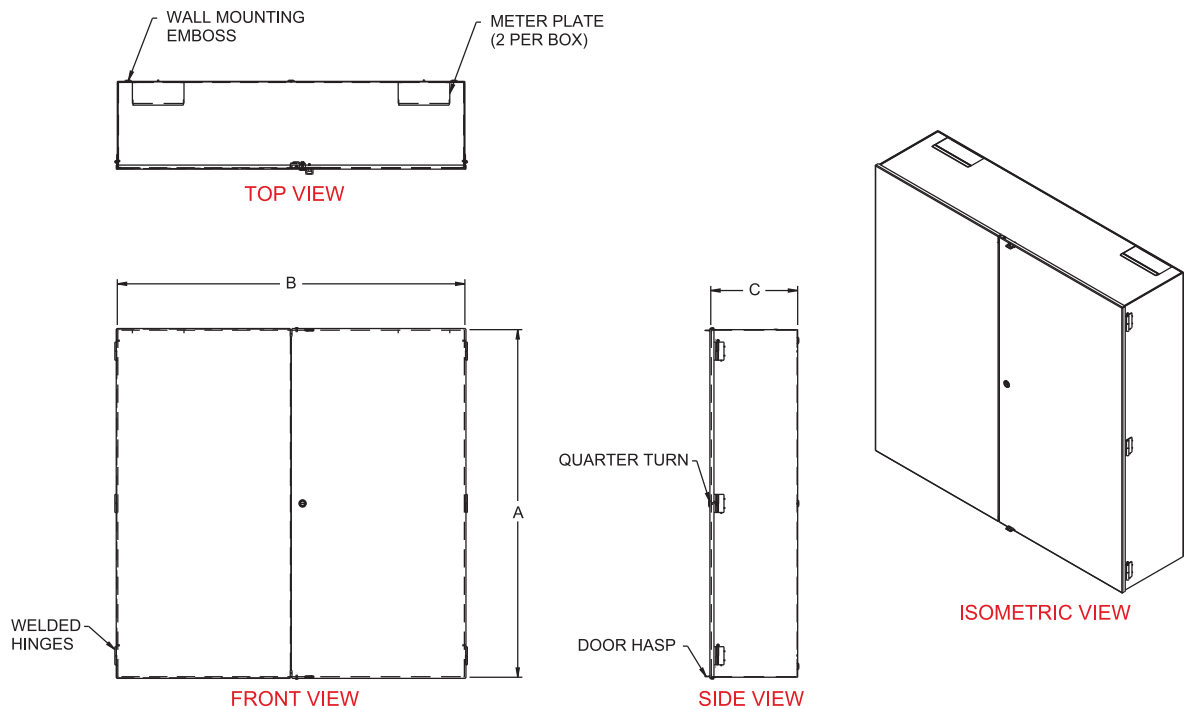
Metering Cabinets
NEMA 1

Single Door



Commercial Enclosures

Double Door



Metering Cabinets

Technical references and CAD downloads available at www.hammondmfg.com

All dimensions in inches unless specified otherwise

Quality Products. Service Excellence.

Hydro-Quebec Metering Cabinets

NEMA 1

Commercial Enclosures


**Inner
Panel
Included**



Application

- Designed for indoor housing of metering transformers per Hydro Quebec specifications.

Standards

- CSA Approved
- **Complies with**
 - IEC 60529, IP20

Construction

- Formed and spot welded from 14 or 16 gauge steel.
- Spot welded construction and formed edges.
- Removable inner panels.
- Hinged covers.
- 2 cutouts in top of each cabinet with metering plates included.

Finish

- Enclosure and cover are finished in ANSI 61 gray inside and out.
- Inner panel is finished in ANSI 6061 gray powder coating

Cabinet Catalog Numbers

Part Number	Dimensions			
	A	B	C	Gauge
CMCQ303010	30	30	10	16
CMCQ363612	36	36	12	14
CMCQ484812	48	48	12	14

Panel Catalog Numbers

Panel Part Number	Description	Dimensions	
		D	E
CMCQP1	Accessory Plate	24.685	7.000
CMCQP2	Universal Support Current Panel	12.756	13.386
CMCQP3	Universal Support Voltage Panel	25.591	15.006

Panel Selection Guide

Enclosure	Panel supplied with enclosure			Panel capacity per enclosure		
	CMCQP1	CMCQP2	CMCQP3	CMCQP1	CMCQP2	CMCQP3
CMCQ303010	1	1	1	1	1	1
CMCQ363612	1	1	1	2	1	1
CMCQ484812	1	1	1	2	2	1

 Technical references and CAD downloads available at www.hammondmfg.com

All dimensions in inches unless specified otherwise

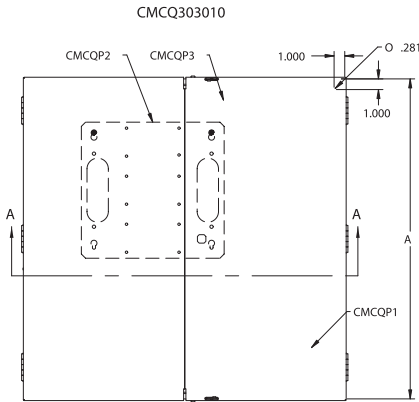
Metering Cabinets

Hydro-Quebec Metering Cabinets

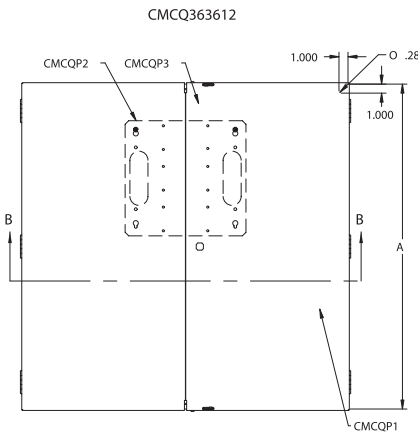
NEMA 1

Commercial Enclosures

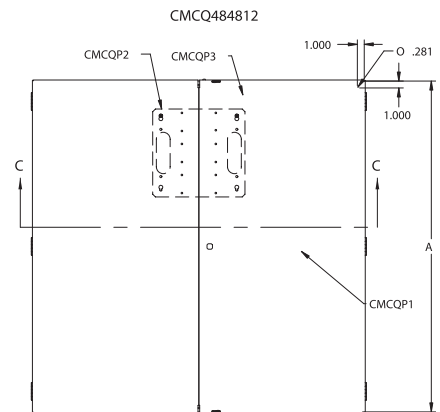
Metering Cabinets



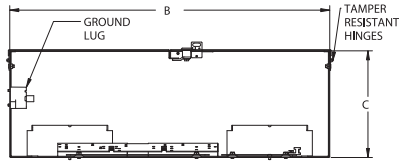
FRONT VIEW - DOORS REMOVED



FRONT VIEW - DOORS REMOVED



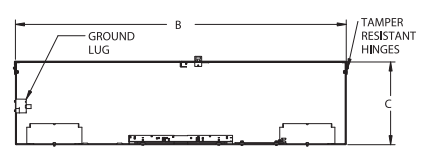
FRONT VIEW - DOORS REMOVED



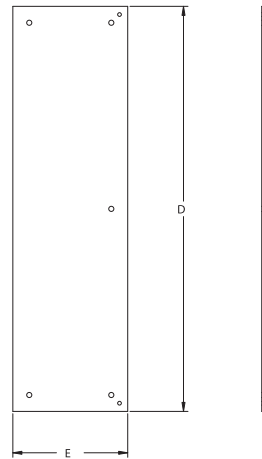
SECTION A-A



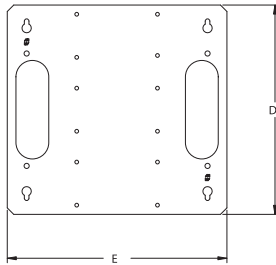
SECTION B-B



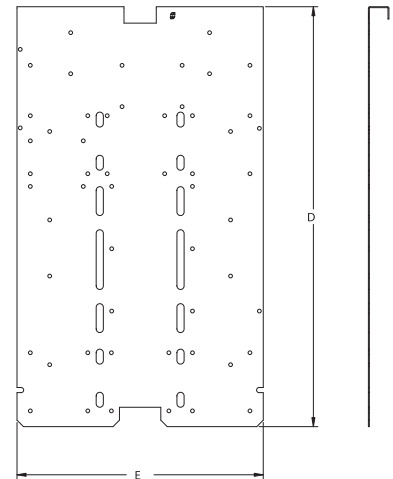
SECTION C-C



CMCQP1
ACCESSORY PLATE



CMCQP2
UNIVERSAL SUPPORT CURRENT
PANEL



CMCQP3
UNIVERSAL SUPPORT VOLTAGE
PANEL

Ontario Hydro Meter Cabinet

NEMA 1

**Inner
Panel
Included**

Commercial Enclosures



Application

- Designed for certain specific Ontario metering applications.

Construction

- Spot welded 16 gauge steel construction.
- Heavy duty padlockable “L” handle.
- Viewing window with removable cover plate.
- Pre-mounted ground lug.
- Inner panel with pre-drilled holes and mounting bracket.
- Oil resistant gasket.

Finish

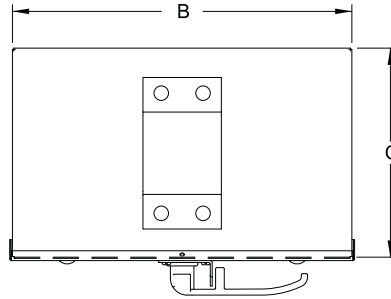
- Enclosure and cover are finished in ANSI 61 gray inside and out.
- Inner panel is finished in ANSI 61 gray powder coating.

Part Number	Dimensions			Panel Size		Viewing Area		Ship Wt. (lbs)
	A	B	C	D	E	G	H	
CMCO241610	24.00	16.00	10.00	20.50	14.75	4.75	9.00	38

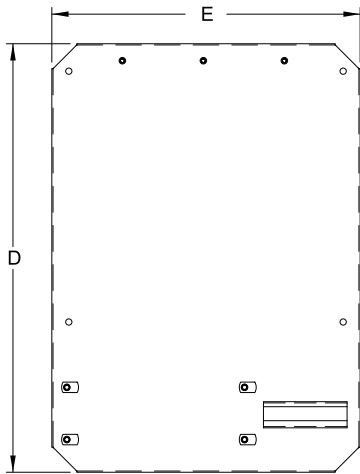
Metering Cabinets

Ontario Hydro Meter Cabinet

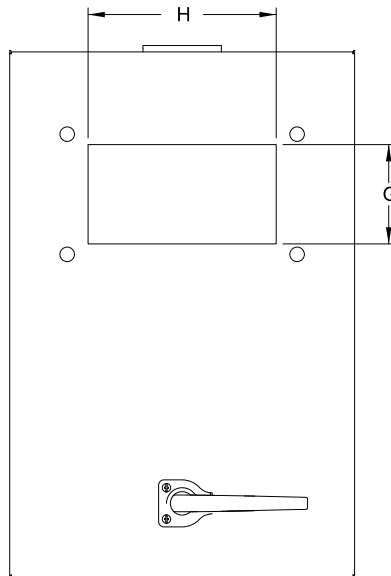
NEMA 1



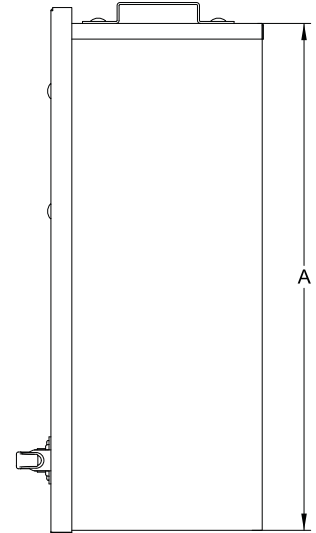
Top View



Inner Panel



Front View



Side View

Commercial Enclosures

Metering Cabinets

Metering Cabinets

NEMA 3R

Commercial Enclosures



**Inner
Panel
Included**



Application

- Designed for outdoor housing of metering transformers.

Standards

- CSA Approved, Type 3R
- **Complies with**
 - NEMA Type 3R
 - IEC 60529, IP24

Construction

- Formed and seam welded from 14 or 16 gauge steel.
- Smooth, continuously welded seams ground smooth.
- Formed lip on enclosure to exclude flowing liquids and contaminants.
- Padlockable “L” style handle.
- Oil resistant gaskets are permanently secured.
- Removable inner panel included.
- Collar studs provided for mounting inner panel.
- Doors may be easily removed for modifications and are interchangeable.
- Bonding stud provided on door and grounding stud installed in enclosure.
- Hinges are constructed from 304 stainless steel.
- Hinge pins are stainless steel.

Finish

- Cover and enclosure are phosphatized and finished with a recoatable ANSI 61 smooth Gray powder inside and out.
- Removable inner panel is finished in white powder coating.

Accessories

- Door stop kit
- Drip shield kits
- Mounting Foot Kit

Part No.	Overall Dimensions			Panel Dimensions		Type of Door	Ship Wt. lbs
	A	B	C	D	E		
C3RMC202010	20	20	10	18.17	18.17	Single	42
C3RMC271310	27	13	10	25.17	11.17	Single	38
C3RMC302010	30	20	10	28.17	18.17	Single	69
C3RMC303010	30	30	10	28.17	28.17	Double	92
C3RMC363612	36	36	12	34.17	34.17	Double	131
C3RMC484812	48	48	12	46.17	46.17	Double	210

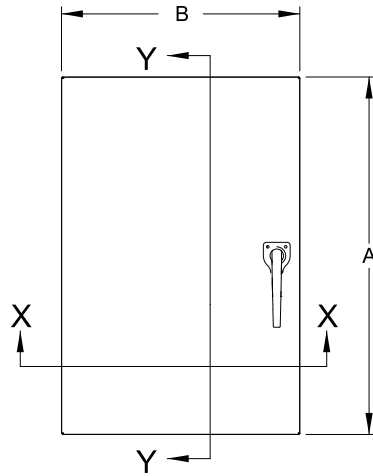
Technical references and CAD downloads available at www.hammondmfg.com

All dimensions in inches unless specified otherwise

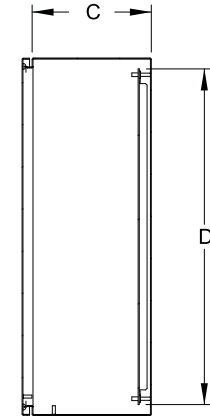
Metering Cabinets

Metering Cabinets
NEMA 3R

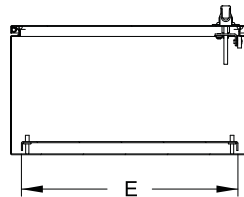
Single Door



Front View

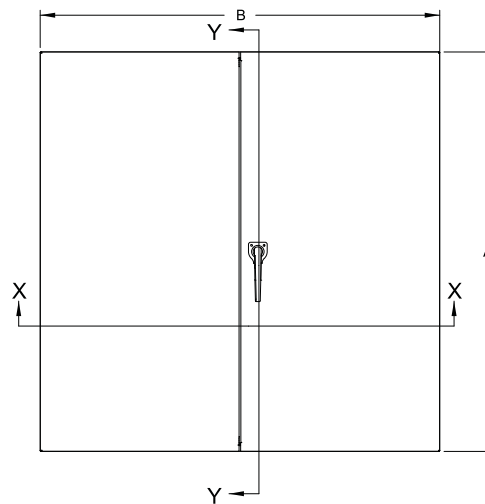


Section Y-Y

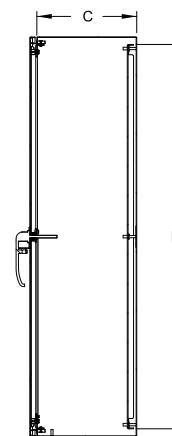


Section X-X

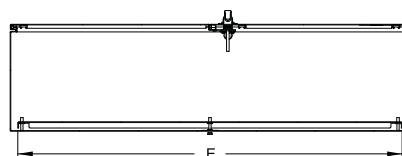
Double Door



Front View



Section Y-Y



Section X-X

Commercial Enclosures

Metering Cabinets

Technical references and CAD downloads available at www.hammondmfg.com

All dimensions in inches unless specified otherwise

Quality Products. Service Excellence.

N1J Series Panel Enclosure

NEMA 1

Commercial Enclosures



**Inner
Panel
Included**



Application

- Designed for indoor use to house controls, instruments and components not requiring oil-tight or dust-tight protection.

Standards

- UL-50 Type 1
- CSA Type 1
- **Complies with**
 - NEMA Type 1
 - IEC 60529, IP20

Construction

- Formed and spot welded from 16 gauge steel.
- Formed steel covers close by use of slotted quarter turn latch.
- Full swing door using butt hinges.
- Through holes in back for wall mounting.
- Bonding stud is provided on the door and a grounding stud is provided on the box.
- Includes 14 gauge steel inner panel.

Finish

- Enclosure and cover are finished in ANSI 61 gray powder coating.
- Inner panel is finished in white powder coating

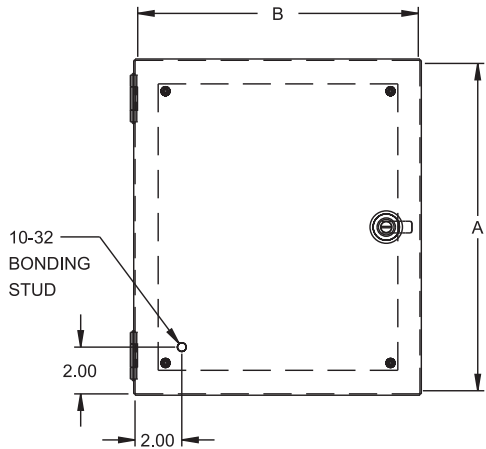
Accessories

- N1JLK Lock Kit...see page **431**

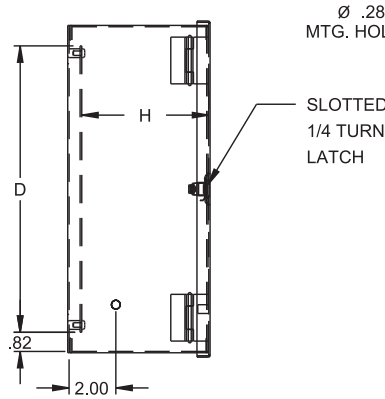
Panel Enclosures

N1J Series Panel Enclosure

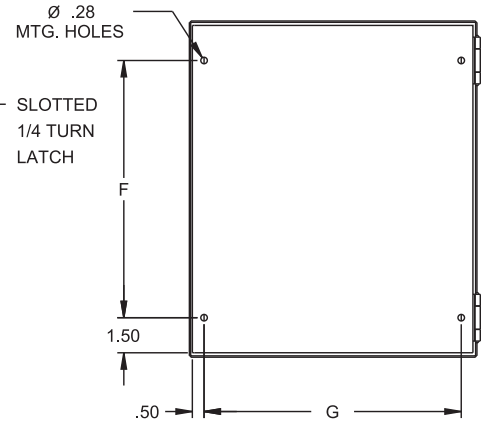
NEMA 1



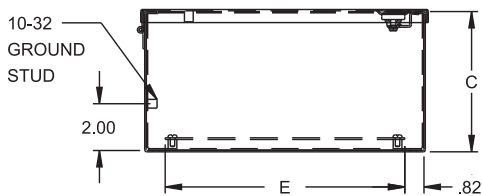
Front View



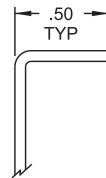
Side View



Back View



Bottom View



Body Flange Detail

Commercial Enclosures

Part No.	Overall Dimensions			Panel Size		Centers			Ship Wt. lbs.
	A	B	C	D	E	F	G	H	
N1J664	6	6	4	4.25	4.25	3.00	5.00	3.43	5
N1J864	8	6	4	6.25	4.25	5.00	5.00	3.43	6
N1J884	8	8	4	6.25	6.25	5.00	7.00	3.43	7
N1J1084	10	8	4	8.25	6.25	7.00	7.00	3.43	8
N1J10104	10	10	4	8.25	8.25	7.00	9.00	3.43	9
N1J12104	12	10	4	10.25	8.25	9.00	9.00	3.43	11
N1J12124	12	12	4	10.25	10.25	9.00	11.00	3.43	13
N1J14124	14	12	4	12.25	10.25	11.00	11.00	3.43	14
N1J886	8	8	6	6.25	6.25	5.00	7.00	5.43	7
N1J1086	10	8	6	8.25	6.25	7.00	7.00	5.43	10
N1J10106	10	10	6	8.25	8.25	7.00	9.00	5.43	11
N1J12106	12	10	6	10.25	8.25	9.00	9.00	5.43	12
N1J12126	12	12	6	10.25	10.25	9.00	11.00	5.43	15
N1J14126	14	12	6	12.25	10.25	11.00	11.00	5.43	16
N1J16126	16	12	6	14.25	10.25	13.00	11.00	5.43	16
N1J20126	20	12	6	18.25	10.25	17.00	11.00	5.43	22
N1J12128	12	12	8	10.25	10.25	9.00	11.00	7.43	17
N1J14128	14	12	8	12.25	10.25	11.00	11.00	7.43	18

Panel Enclosures

N1A Series Panel Enclosure

Non-Ventilated - NEMA 1

Commercial Enclosures



Inner
Panel
Included



Application

- Designed for indoor use to house controls, instruments and components not requiring oil-tight or dust-tight protection.

Standards

- UL 50 Type 1
- CSA Type 1
- **Complies with**
 - NEMA Type 1
 - IEC 60529, IP20

Construction

- Enclosure is formed and spot welded from 12 or 14 gauge steel.
- Removable 12 or 14 gauge inner panel is mounted in the rear of the enclosure on collar studs.
- Removable door is mounted on slip hinges.
- Door is fastened with a slotted quarter turn latch; doors 30" and higher are provided with two latches.
- A bonding stud is provided on the door and a grounding stud is provided in the box.
- Mounting holes are provided in the rear of the enclosure.
- Piano hinge on 12 gauge units

Finish

- Enclosure and door are finished in ANSI 61 gray powder coating.
- Inner panel is finished in white powder coating.

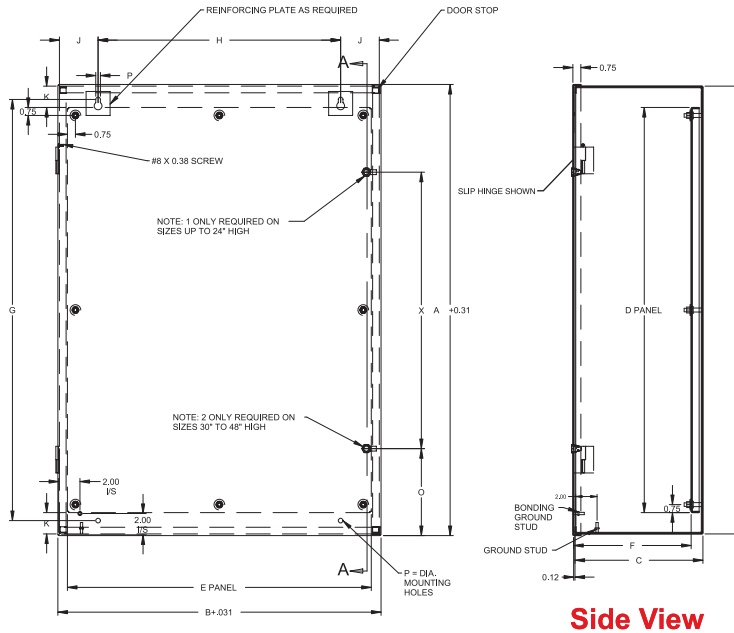
Accessories

- Additional inner panels...see page **438**
- Lock kit for NEMA 1 enclosures (Part No. **1427LKN1**)...see page **431**
- Louvered ventilating plates
...see page **402**
- Window kits...see page **449**
- Padlock Adaptor...see page **435**

Panel Enclosures

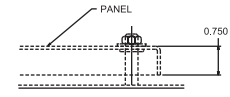
N1A Series Panel Enclosure

Non-Ventilated - NEMA 1

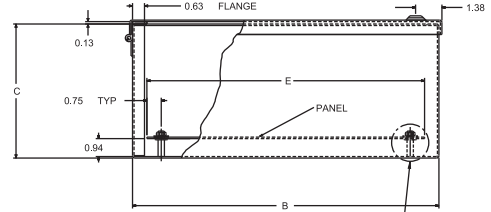


Front View

Side View



Detail A
Typ. for N1A423012,
N1A423612
and N1A483612



Bottom View

SEE DETAIL A FOR LARGER PANEL EXCEPTIONS

When A=	X=
30	18.00
36	22.00
42	26.00
48	30.00

Part No.	Dimensions			Panel Size		Panel Gauge	No. of Studs	Mounting Dimensions					Panel Clearance			Ship Wt. lbs
	A	B	C	D	E			G	H	J	Q	P	F	K	O	
N1A16127	16	12	7	13	10.50	14	4	13.88	7.00	2.50	1.06	0.31	6.04	1.5	—	25
N1A16167	16	16	7	13	14.50	14	4	13.88	11.00	2.50	1.06	0.31	6.04	1.5	—	30
N1A16207	16	20	7	13	18.50	14	4	13.88	15.00	2.50	1.06	0.31	6.04	1.5	—	36
N1A20167	20	16	7	17	14.50	14	4	17.88	11.00	2.50	1.06	0.31	6.04	1.5	—	37
N1A20207	20	20	7	17	18.50	14	4	17.88	15.00	2.50	1.06	0.31	6.04	1.5	—	43
N1A24167	24	16	7	21	14.50	14	4	21.88	11.00	2.50	1.06	0.31	6.04	1.5	—	43
N1A24207	24	20	7	21	18.50	14	4	21.88	15.00	2.50	1.06	0.31	6.04	1.5	—	51
N1A24247	24	24	7	21	22.50	12	4	21.88	19.00	2.50	1.06	0.31	6.01	1.5	—	67
N1A30207	30	20	7	26	18.50	12	6	27.50	12.75	3.63	1.25	0.44	6.01	2.0	6.16	67
N1A30247	30	24	7	26	22.50	12	6	27.50	16.75	3.63	1.25	0.44	6.01	2.0	6.16	80
N1A36247	36	24	7	32	22.50	12	6	33.50	16.75	3.63	1.25	0.44	6.01	2.0	7.16	94
N1A36307	36	30	7	32	28.50	12	8	33.50	22.75	3.63	1.25	0.44	6.01	2.0	7.16	114
N1A16129	16	12	9	13	10.50	14	4	13.88	7.00	2.50	1.06	0.31	8.04	1.5	—	27
N1A20169	20	16	9	17	14.50	14	4	17.88	11.00	2.50	1.06	0.31	8.04	1.5	—	31
N1A20209	20	20	9	17	18.50	14	4	17.88	15.00	2.50	1.06	0.31	8.04	1.5	—	47
N1A20249	20	24	9	17	22.50	14	4	17.88	19.00	2.50	1.06	0.31	8.04	1.5	—	55
N1A24209	24	20	9	21	18.50	14	4	21.88	15.00	2.50	1.06	0.31	8.04	1.5	—	55
N1A24249	24	24	9	21	22.50	12	4	21.88	19.00	2.50	1.06	0.31	8.01	1.5	—	125
N1A30209	30	20	9	26	18.50	12	6	27.50	12.75	3.63	1.25	0.44	8.01	2.0	6.16	72
N1A30249	30	24	9	26	22.50	12	6	27.50	16.75	3.63	1.25	0.44	8.01	2.0	6.16	85
N1A30309	30	30	9	26	28.50	12	8	27.50	22.75	3.63	1.25	0.44	8.01	2.0	6.16	102
N1A36249	36	24	9	32	22.50	12	6	33.50	16.75	3.63	1.25	0.44	8.01	2.0	7.16	107
N1A36309	36	30	9	32	28.50	12	8	33.50	22.75	3.63	1.25	0.44	8.01	2.0	7.16	120
N1A42249	42	24	9	38	22.50	12	6	39.50	16.75	3.63	1.25	0.44	8.01	2.0	8.16	111
N1A242012	24	20	12	21	18.50	14	4	21.88	15.00	2.50	1.06	0.31	11.04	1.5	—	61
N1A242412	24	24	12	21	22.50	12	4	21.88	19.00	2.50	1.06	0.31	11.01	1.5	—	132
N1A302412	30	24	12	26	22.50	12	6	27.50	16.75	3.63	1.25	0.44	11.01	2.0	6.16	94
N1A363012	36	30	12	32	28.50	12	8	33.50	22.75	3.63	1.25	0.44	11.01	2.0	7.16	129
N1A423012 ¹	42	30	12	38	28.50	12	8	39.50	22.75	3.63	1.25	0.44	11.01	2.0	8.16	144
N1A423612 ¹	42	36	12	38	34.50	12	8	39.50	28.75	3.63	1.25	0.44	11.01	2.0	8.16	169
N1A483612 ¹	48	36	12	44	34.50	12	8	45.50	28.75	3.63	1.25	0.44	11.01	2.0	9.16	197

¹ 12 gauge construction

Technical references and CAD downloads available at www.hammondmfg.com

All dimensions in inches unless specified otherwise

Quality Products. Service Excellence.

Commercial Enclosures

Panel Enclosures

1420 Series Panel Enclosure

Non-Ventilated - NEMA 1

Commercial Enclosures



**Inner
Panel
Included**



Application

- Designed for indoor use to house controls, instruments and components which do not require oil-tight or dust-tight protection.

Standards

- UL 508 Type 1
- CSA Type 1
- **Complies with**
 - NEMA Type 1
 - IEC 60529, IP20

Construction

- Enclosure is formed and spot welded from 12 or 14 gauge steel.
- Removable 12 gauge inner panel is mounted to the rear of the enclosure on collar studs.
- Removable door is attached with slip hinges.
- To remove door, a tool is required to remove the #8 screw which captivates hinge.
- Door is fastened with a slotted 1/4 turn latch; doors 30" and higher are provided with two latches.
- A bonding stud is provided on the door and a grounding stud is provided in the box.
- Piano hinge on 12 gauge units

Finish

- Enclosure and door are finished in ANSI 61 gray powder coating.
- Inner panel is finished in white powder coating.

Accessories

- Additional inner panels...*see page 438*
- Lock kit for NEMA 1 enclosures (Part No. **1427LKN1**)...*see page 431*
- Louvered ventilating plates...*see page 402*
- Window kits...*see page 449*
- Padlock Adaptor...*see page 435*

Panel Enclosures

Part No.	Mounting Centers			Panel Size			Ship Wt. lbs			
	A	B	C	J	F	D		E	H	O
1420B7	16	12	7	17.50	9.50	14	10	5.88	—	26
1420C7	20	16	7	21.50	10.00	18	14	5.88	—	39
1420D7	20	20	7	21.50	14.00	18	18	5.88	—	48
1420E7	24	20	7	25.50	14.00	22	18	5.88	—	53
1420F7	30	20	7	31.50	14.00	28	18	5.88	6.16	67
1420G7	30	24	7	31.50	18.00	28	22	5.88	6.16	79
1420H7	36	24	7	37.50	18.00	34	22	5.88	7.16	90
1420E9	24	20	9	25.50	14.00	22	18	7.88	—	60
1420EM9	24	24	9	25.50	18.00	22	22	7.88	—	71
1420G9	30	24	9	31.50	18.00	28	22	7.88	6.16	84

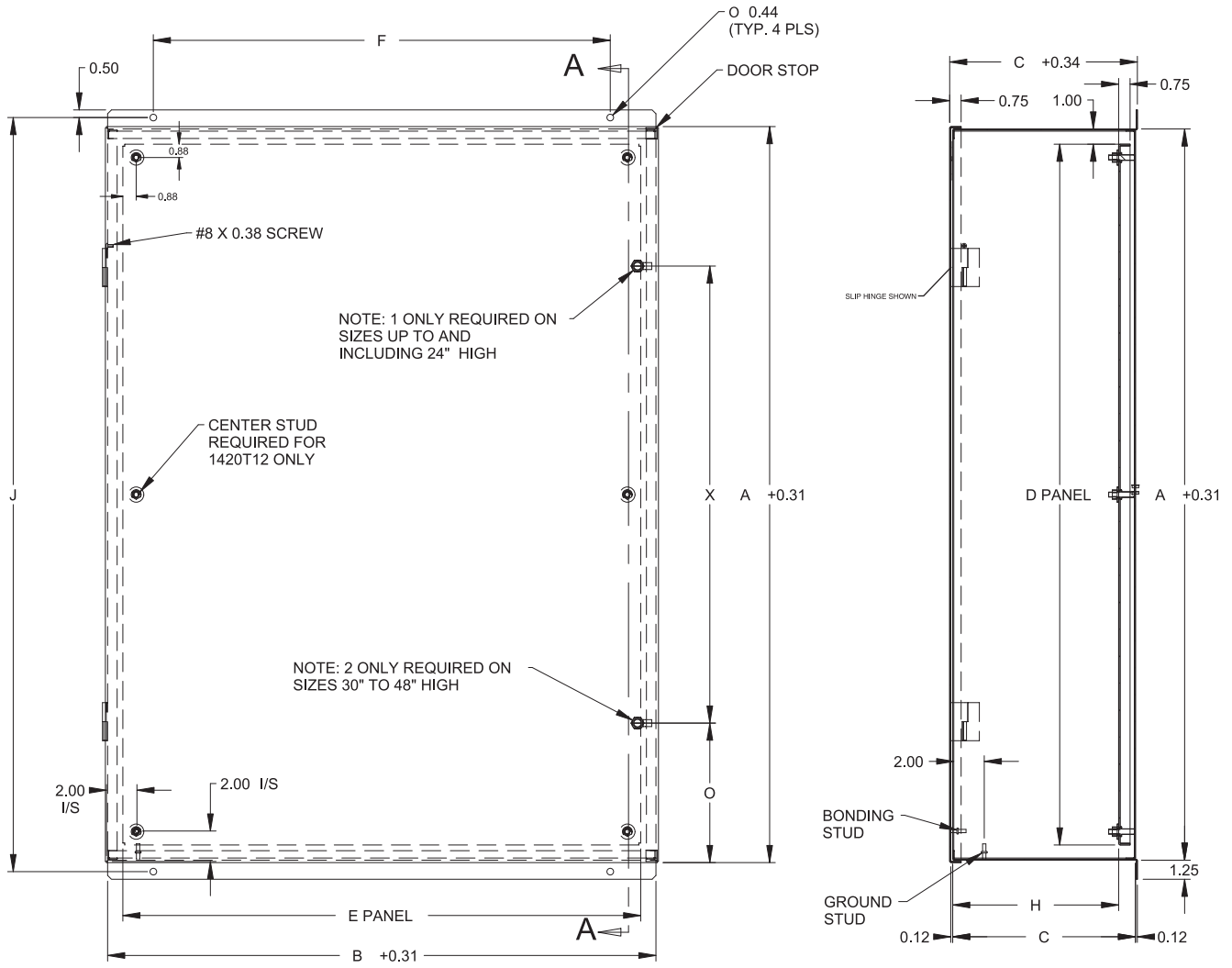
¹ 12 gauge construction

Technical references and CAD downloads available at www.hammondmfg.com

All dimensions in inches unless specified otherwise

1420 Series Panel Enclosure

Non-Ventilated - NEMA 1

Commercial Enclosures
Panel Enclosures

FRONT VIEW
SECTION A-A

When A=	X=
30	18.00
36	22.00
42	26.00
48	30.00

Part No.	Mounting Centers				Panel Size		H	O	Ship Wt. lbs	
	A	B	C	J	F	D				E
1420H9	36	24	9	37.50	18.00	34	22	7.88	7.16	98
1420P9	36	30	9	37.50	24.00	34	28	7.88	7.16	118
1420Q9	42	24	9	43.50	18.00	40	22	7.88	8.16	111
1420G12	30	24	12	31.50	18.00	28	22	10.88	6.16	92
1420P12	36	30	12	37.50	24.00	34	28	10.88	7.16	128
1420R12 ¹	42	30	12	43.50	24.00	40	28	10.88	8.16	142
1420S12 ¹	42	36	12	43.50	30.00	40	34	10.88	8.16	156
1420T12 ¹	48	36	12	49.50	30.00	46	34	10.88	9.16	214
1420G16	30	24	16	31.50	18.00	28	22	14.88	6.16	105
1420P16	36	30	16	37.50	24.00	34	28	14.88	7.16	144

¹ 12 gauge construction

1416 Series - NEMA 1

Ventilated Component Case



Commercial Enclosures

Application

- Designed to provide mechanical protection for components requiring ventilation.
- Suitable for use where heat dissipation is required.

Standards

- **Complies with**
 - NEMA Type 1

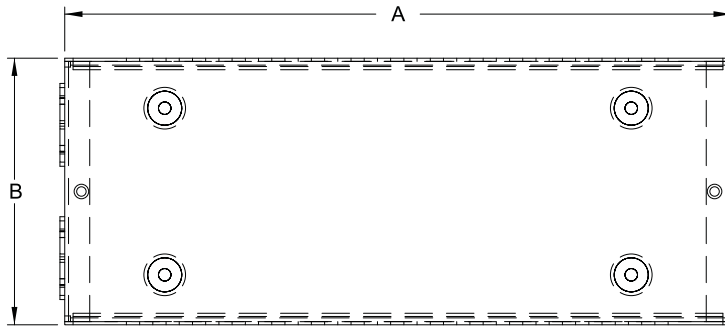
Construction

- Base is formed from 16 gauge steel with two 0.5"/0.75" conduit knock-outs located in each end.
- Four .125" high raised dimples with mounting holes are provided on the base.
- Cover is formed from 18 gauge steel with 0.235" x 1.5" ventilating slots (0.199" x 1.12" on E & G only).
- Screw holes and offsets in the cover allow easy assembly.

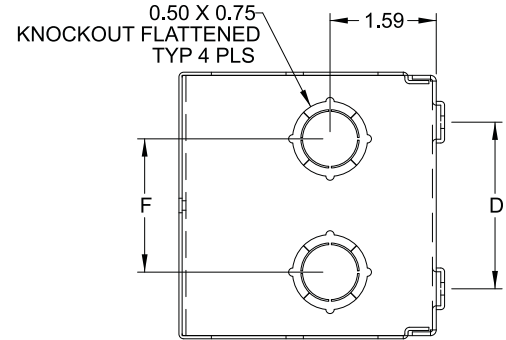
Finish

- Base and cover are finished in ANSI 61 gray powder coating.

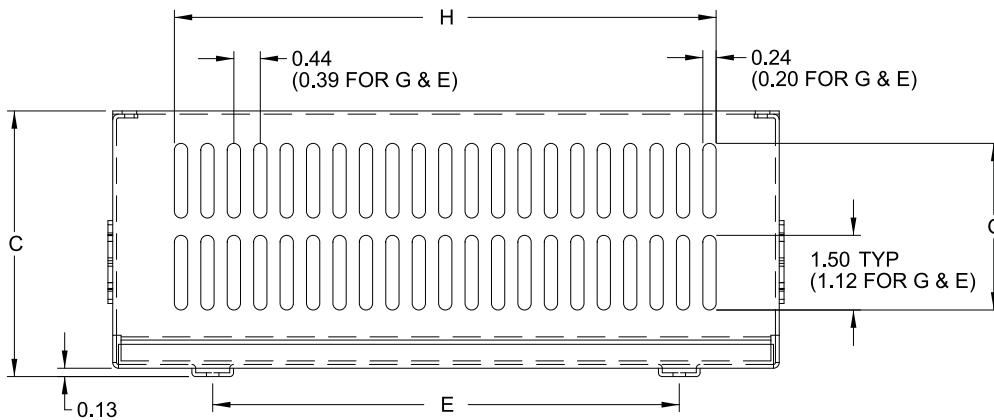
1416 Series - NEMA 1 Ventilated Component Case



Top View



Side View



Front View

Commercial Enclosures

Part No.	Dimensions						Ventilated Area		Ship Wt. lbs.
	A	B	C	D	E	F	G	H	
1416E	6	4	4	2.5	4	2	2.50	4.06	2
1416G	10	4	4	2.5	7	2	2.50	8.31	2
1416I	10	6	6	4.5	7	3	3.25	7.68	4
1416K	11	7	7	5.5	8	4	5.00	7.68	6
1416M	12	8	8	6.5	9	5	5.00	10.31	8
1416O	15	10	8	8.5	12	6	5.00	12.93	10
1416Q	20	10	8	8.5	17	6	5.00	18.18	12
1416T	20	10	10	8.5	17	6	6.75	15.56	14

N1WS Series Surface Mount Panel Enclosure

3 Piece Assembly - NEMA 1



Commercial Enclosures

Application

- Designed for indoor use to enclose controls, instruments, and components which do not require oil-tight or dust-tight protection.
- Ideal for applications where components may be easily mounted and wired prior to installation of wrapper and door.

Standards

- UL 50 Type 1
- CSA Type 1
- **Complies with**
 - NEMA Type 1
 - IEC 60529, IP20

Construction

- Three piece assembly consisting of a base, wrapper, and door.
- Components are attached and secured with metal screws.
- 14 gauge reverse formed base provides clearance for mounting hardware.
- Wrapper is available in three depths: 4", 6", and 8".
- Wrapper is formed from 16 gauge steel, with no knock-outs in the sides.
- Door assembly formed from 16 gauge steel.
- Removable door is mounted on slip hinges.
- A bonding stud is provided on the door and a grounding screw is provided for the enclosure.
- Door is fastened with a slotted quarter turn latch.

Finish

- Base, wrapper and door are finished in ANSI 61 gray powder coating.

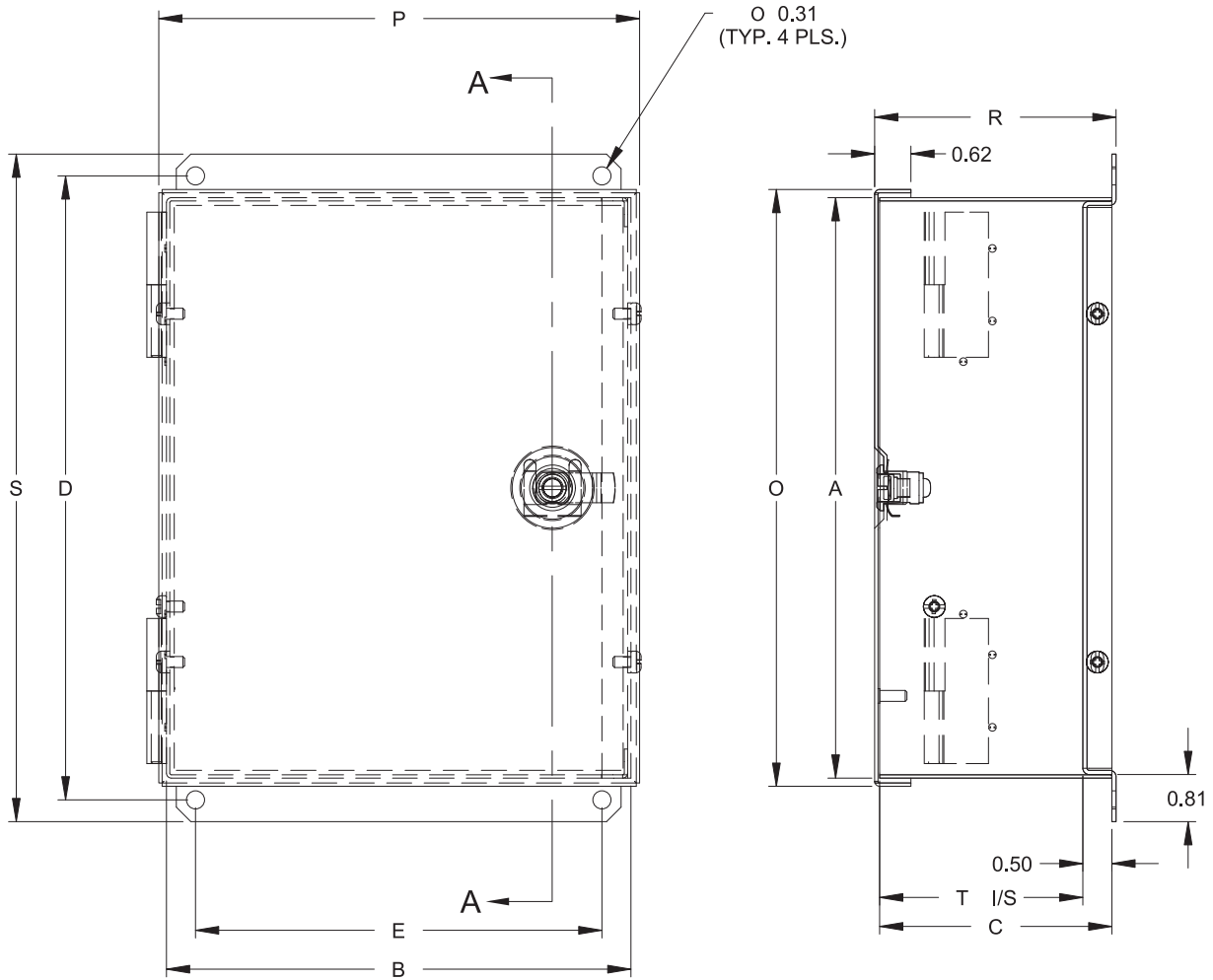
Accessories

- Surface lock kit (Part No. N1JLK)
...see page **431**
- Padlock Adaptor (Part No. EJPA)
...see page **435**

Panel Enclosures

N1WS Series Surface Mount Panel Enclosure

3 Piece Assembly - NEMA 1



Front View

Side View

Part No.	Wrapper Size	Mounting Centers					Overall Dimensions				Ship Wt. Lbs.	
		A	B	C	D	E	P	R	S	T		O
N1WS864	4" Deep	8	6	4	8.75	5	6.28	4.16	9.5	3.5	8.28	5
N1WS1084		10	8	4	10.75	7	8.28	4.16	11.5	3.5	10.28	7
N1WS12104		12	10	4	12.75	9	10.28	4.16	13.5	3.5	12.28	10
N1WS16124		16	12	4	16.75	11	12.28	4.16	17.5	3.5	16.28	14
N1WS20164		20	16	4	20.75	15	16.28	4.16	21.5	3.5	20.28	20
N1WS24204		24	20	4	24.75	19	20.28	4.16	25.5	3.5	24.28	28
N1WS866	6" Deep	8	6	6	8.75	5	6.28	6.16	9.5	5.5	8.28	6
N1WS1086		10	8	6	10.75	7	8.28	6.16	11.5	5.5	10.28	9
N1WS12106		12	10	6	12.75	9	10.28	6.16	13.5	5.5	12.28	11
N1WS16126		16	12	6	16.75	11	12.28	6.16	17.5	5.5	16.28	16
N1WS20166		20	16	6	20.75	15	16.28	6.16	21.5	5.5	20.28	22
N1WS24206		24	20	6	24.75	19	20.28	6.16	25.5	5.5	24.28	31
N1WS868	8" Deep	8	6	8	8.75	5	6.28	8.16	9.5	7.5	8.28	7
N1WS1088		10	8	8	10.75	7	8.28	8.16	11.5	7.5	10.28	10
N1WS12108		12	10	8	12.75	9	10.28	8.16	13.5	7.5	12.28	13
N1WS16128		16	12	8	16.75	11	12.28	8.16	17.5	7.5	16.28	18
N1WS20168		20	16	8	20.75	15	16.28	8.16	21.5	7.5	20.28	26
N1WS24208		24	20	8	24.75	19	20.28	8.16	25.5	7.5	24.28	34

Commercial Enclosures

Panel Enclosures

Technical references and CAD downloads available at www.hammondmfg.com

All dimensions in inches unless specified otherwise

Quality Products. Service Excellence.

N1WF Series Flush Mount Panel Enclosure

3 Piece Assembly - NEMA 1



Commercial Enclosures



Application

- Designed for indoor use to enclose controls, instruments, and components which do not require oil-tight or dust-tight protection.
- Ideal for applications where components may be easily mounted and wired prior to installation of wrapper and door.

Standards

- UL 50 Type 1
- CSA Type 1
- **Complies with**
 - NEMA Type 1
 - IEC 60529, IP20

Construction

- Three piece assembly consisting of a base, wrapper, and door.
- Components are attached and secured with metal screws.
- 14 gauge reverse formed base provides clearance for mounting hardware.
- Punched for left or right hinging of the door and ease of assembly.
- Wrapper is formed from 16 gauge steel, with no knock-outs in the sides.
- Flush mounting door assembly formed from 16 gauge steel.
- Door is fastened with a slotted quarter turn latch.
- A bonding stud is provided on the door and a grounding screw is provided for the enclosure.

Finish

- Base, wrapper and door are finished in ANSI 61 gray powder coating.

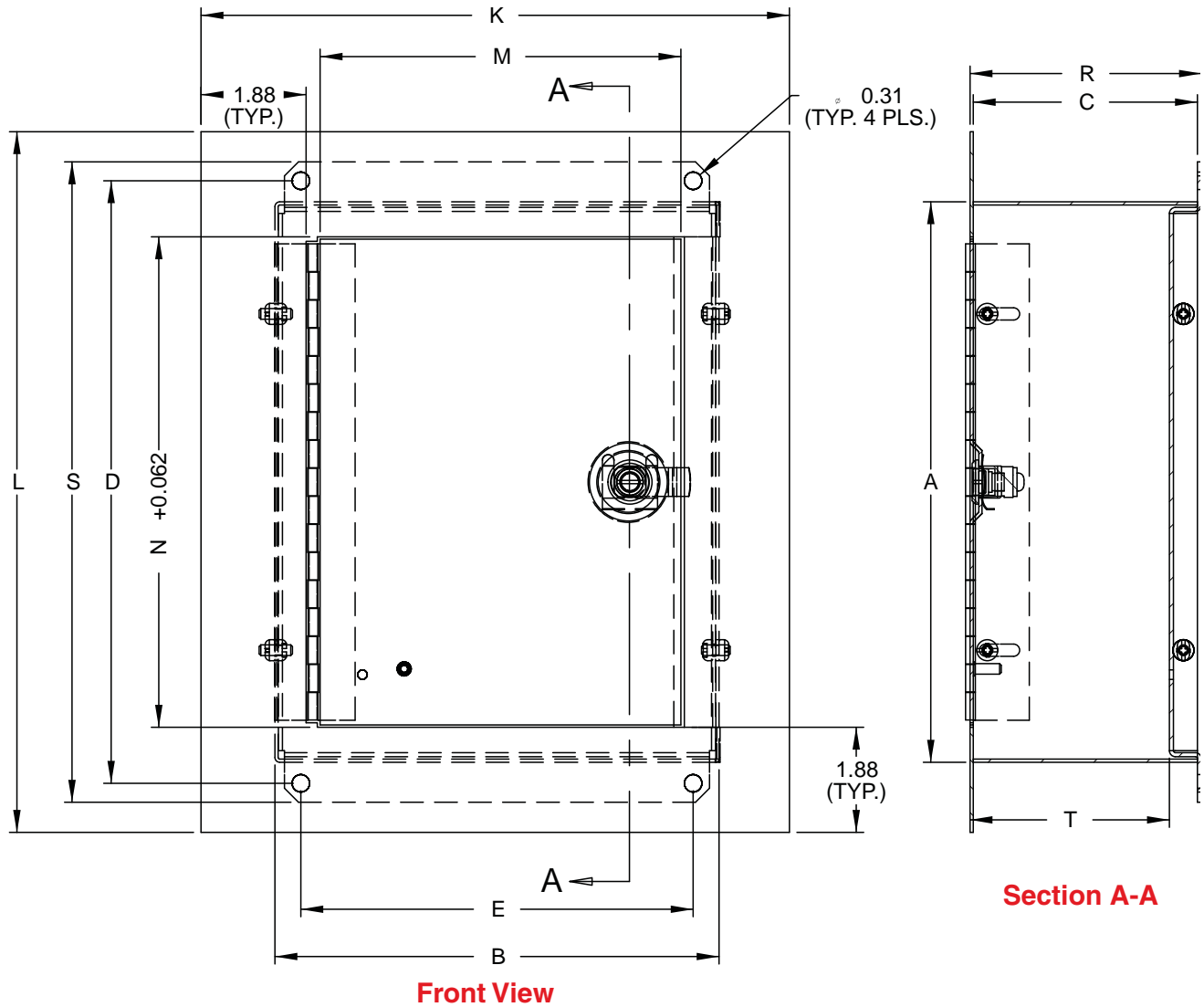
Accessories

- Surface lock kit (Part No. N1JLK)
...see page **431**
- Padlock Adaptor (Part No. EJPA)
...see page **435**

Panel Enclosures

N1WF Series Flush Mount Panel Enclosure

3 Piece Assembly - NEMA 1



Commercial Enclosures

Panel Enclosures

Part No.	Wrapper Size		Mounting Centers		Door			Overall Dimensions			Base		Ship Wt. Lbs.
	A	B	C	D	E	M	N	K	R1	L	S	T1	
N1WF864	8	6	4	8.75	5	4.46	6.68	8.5	4.13 - 4.6	10.5	9.5	3.5 - 3.9	6
N1WF1084	10	8	4	10.75	7	6.46	8.68	10.5	4.13 - 4.6	12.5	11.5	3.5 - 3.9	8
N1WF12104	12	10	4	12.75	9	8.46	10.68	12.5	4.13 - 4.6	14.5	13.5	3.5 - 3.9	11
N1WF16124	16	12	4	16.75	11	10.46	14.68	14.5	4.13 - 4.6	18.5	17.5	3.5 - 3.9	15
N1WF20164	20	16	4	20.75	15	14.46	18.68	18.5	4.13 - 4.6	22.5	21.5	3.5 - 3.9	22
N1WF24204	24	20	4	24.75	19	18.46	22.68	22.5	4.13 - 4.6	26.5	25.5	3.5 - 3.9	30

Screw Cover Enclosures with Knockouts

NEMA 3R

Commercial Enclosures



Application

- Designed for use as a wiring/ junction box.
- Provides protection against rain, sleet, snow and dripping water.

Standards

- UL-50 Type 3R
- CSA Type 3R
- **Complies with:**
 - NEMA Type 3R
 - IEC 60529, IP24

Construction

- Formed and spot welded from 16 or 14 gauge galvanized steel.
- Drip-shield top and seam-free sides, front and back.
- Slip-on removable cover fastened with plated steel screws.
- Door handles on body type C enclosures.
- Embossed mounting holes on back of enclosure.
- Easily removed knockouts on bottom of enclosure.
- Padlocking hasp.
- No Gasket.

Finish

- Enclosure and cover are finished in ANSI 61 gray powder coating.

Screw Cover Enclosures with Knockouts

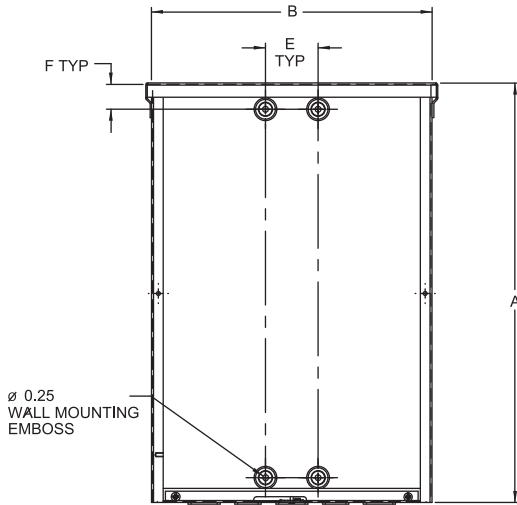
NEMA 3R

Part No.	Body Type	Mounting						Knockout Pattern (see next page)	Shipping Wt. lbs
		A	B	C	D	E	F		
C3R444SC	A	4	4	4	-	1.88	2.00	2-3	2
C3R644SC	A	6	4	4	-	1.88	1.06	2-3	2
C3R1244SC	A	12	4	4	-	1.88	1.06	2-3	3
C3R664SC	A	6	6	4	-	2.25	1.06	2-3-4	4
C3R864SC	A	8	6	4	-	2.25	1.06	2-3-4	5
C3R884SC	A	8	8	4	-	2.25	1.06	6-7-8-9	5
C3R1084SC	A	10	8	4	-	2.25	1.06	6-7-8-9	7
C3R1284SC	A	12	8	4	-	2.25	1.06	6-7-8-9	7
C3R10104SC	A	10	10	4	-	2.25	1.06	3-4-5-6-7	7
C3R12104SC	A	12	10	4	-	2.25	1.06	3-4-5-6-7	9
C3R12124SC	A	12	12	4	-	2.25	1.06	3-4-5-6-7	10
C3R18124SC	A	18	12	4	-	2.25	1.06	3-4-5-6-7	13
C3R18184SC	B	18	18	4	-	13.00	1.12	1-2-3-4-5-6-7-8-9	19
C3R666SC	A	6	6	6	-	2.25	1.06	2-3-4	5
C3R1866SC	A	18	6	6	-	2.25	1.06	2-3-4	12
C3R886SC	A	8	8	6	-	2.25	1.06	6-7-8-9	6
C3R1086SC	A	10	8	6	-	2.25	1.06	6-7-8-9	11
C3R10106SC	A	10	10	6	-	2.25	1.06	3-4-5-6-7	13
C3R1286SC	A	12	8	6	-	2.25	1.06	6-7-8-9	11
C3R12106SC	A	12	10	6	-	2.25	1.06	3-4-5-6-7	12
C3R12126SC	A	12	12	6	-	2.25	1.06	3-4-5-6-7	12
C3R15126SC	A	15	12	6	-	2.25	1.06	3-4-5-6-7	13
C3R16126SC	A	16	12	6	-	2.25	1.06	3-4-5-6-7	14
C3R18126SC	A	18	12	6	-	2.25	1.06	3-4-5-6-7	15
C3R18186SC	B	18	18	6	-	13.00	1.12	1-2-3-4-5-6-7-8-9	16
C3R24126SC	B	24	12	6	-	13.00	1.12	3-4-5-6-7	25
C3R24186SC	B	24	18	6	-	13.00	1.12	1-2-3-4-5-6-7-8-9	33
C3R24246SC	B	24	24	6	-	13.00	1.12	1-2-3-4-5-6-7-8-9	40
C3R888SC	A	8	8	8	-	2.25	1.06	6-7-8-9	8
C3R2488SC	A	24	8	8	-	2.25	1.06	6-7-8-9	17
C3R12128SC	A	12	12	8	-	2.25	1.06	3-4-5-6-7	13
C3R15128SC	A	15	12	8	-	2.25	1.06	3-4-5-6-7	14
C3R18128SC	A	18	12	8	-	2.25	1.06	3-4-5-6-7	19
C3R24168SC	B	24	16	8	-	13.00	1.12	3-4-5-6-7	22
C3R18188SC	B	18	18	8	-	13.00	1.12	1-2-3-4-5-6-7-8-9	25
C3R24188SC	B	24	18	8	-	13.00	1.12	1-2-3-4-5-6-7-8-9	38
C3R24208SC	B	24	20	8	-	13.00	1.12	1-2-3-4-5-6-7-8-9	39
C3R24248SC	C	24	24	8	12.04	13.00	1.12	1-2-3-4-5-6-7-8-9	44
C3R30248SC	C	30	24	8	15.04	13.00	1.12	1-2-3-4-5-6-7-8-9	53
C3R48368SC	C	48	36	8	24.04	33.00	1.50	1-2-3-4-5-6-7-8-9	150
C3R181810SC	C	18	18	10	9.04	13.00	1.12	1-2-3-4-5-6-7-8-9	25
C3R241810SC	C	24	18	10	12.04	13.00	1.12	1-2-3-4-5-6-7-8-9	38
C3R242410SC	C	24	24	10	12.04	13.00	1.12	1-2-3-4-5-6-7-8-9	49
C3R302410SC	C	30	24	10	15.04	13.00	1.50	1-2-3-4-5-6-7-8-9	55
C3R242412SC	C	24	24	12	12.04	13.00	1.12	1-2-3-4-5-6-7-8-9	54
C3R303012SC	C	30	30	12	15.04	27.00	1.50	1-2-3-4-5-6-7-8-9	125
C3R363012SC	C	36	30	12	18.04	27.00	1.50	1-2-3-4-5-6-7-8-9	128
C3R363612SC	C	36	36	12	18.04	33.00	1.50	1-2-3-4-5-6-7-8-9	130
C3R303016SC	C	30	30	16	15.04	27.00	1.50	1-2-3-4-5-6-7-8-9	127
C3R483616SC	C	48	36	16	24.04	33.00	1.50	1-2-3-4-5-6-7-8-9	155

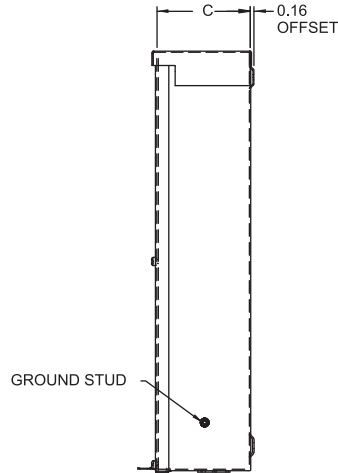
Screw Cover Enclosures with Knockouts

NEMA 3R

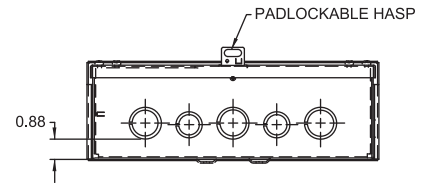
Body Type A



Front View - Cover Removed

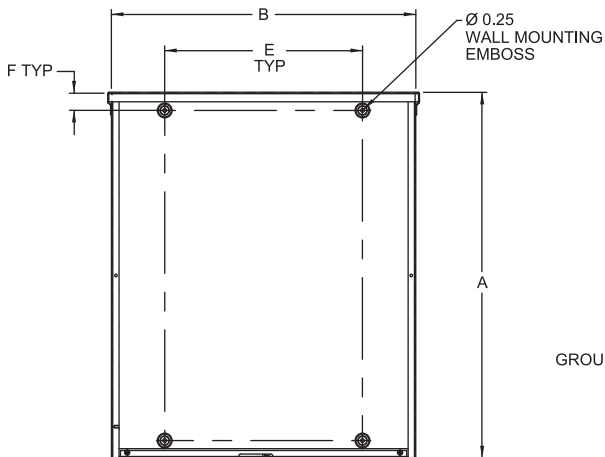


Side View

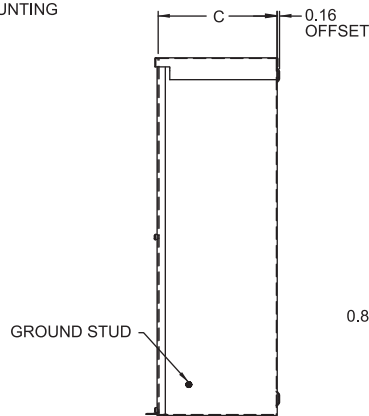


Bottom View
(SEE KNOCKOUT PATTERN FOR DETAILS)

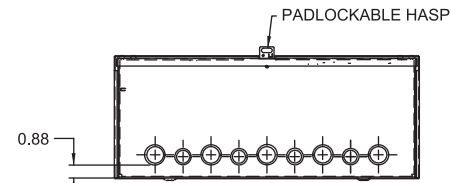
Body Type B



Front View - Cover Removed



Side View



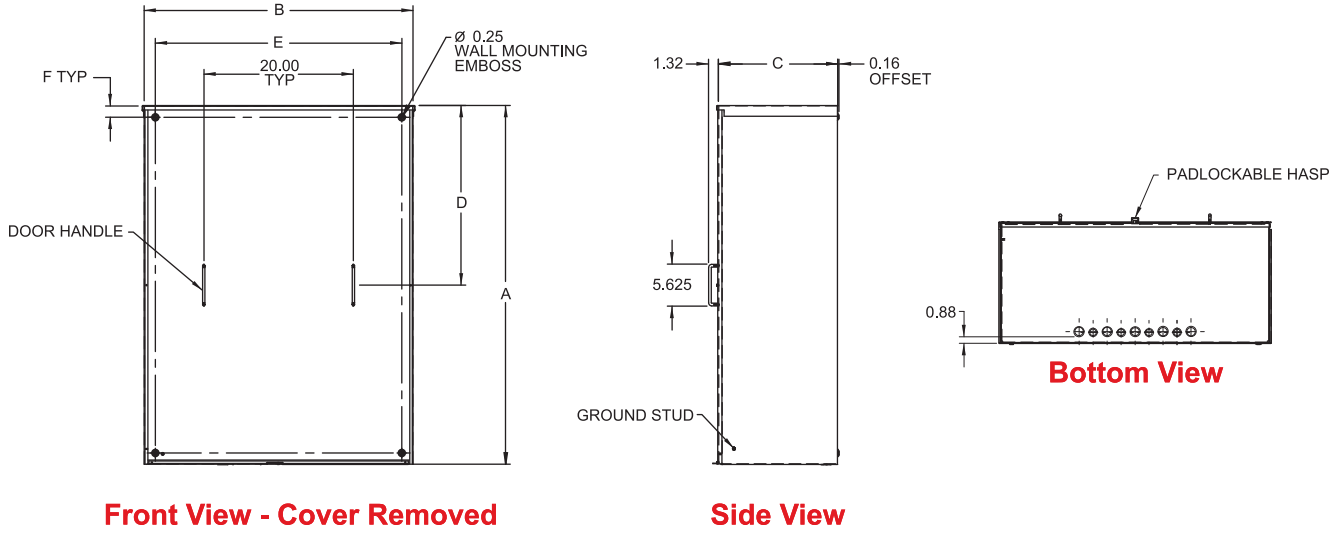
Bottom View
(SEE KNOCKOUT PATTERN FOR DETAILS)

Commercial Enclosures

Screw Cover Enclosures with Knockouts

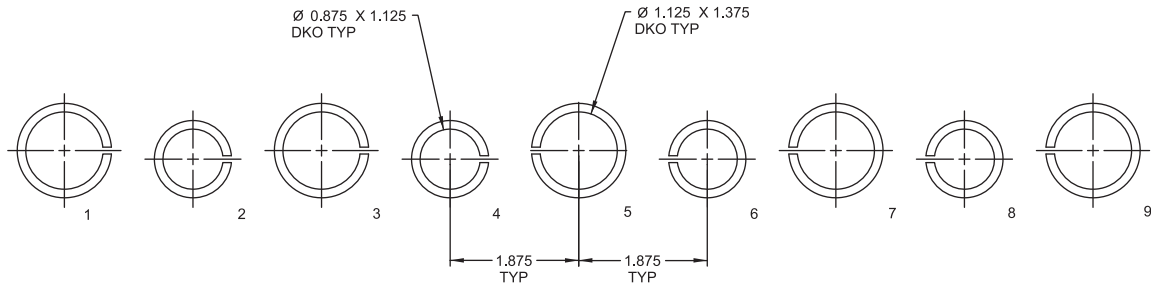
NEMA 3R

Body Type C



Commercial Enclosures

Knockout Pattern



Small Hinged Cover Enclosures with Knockouts

NEMA 3R

Commercial Enclosures



Panel
Sold
Separately



Application

- Designed for use as a wiring/junction box.
- Provides protection against rain, sleet, snow and dripping water.

Standards

- UL-50 Type 3R
- CSA Type 3R
- **Complies with**
 - NEMA Type 3R
 - IEC 60529, IP24

Construction

- Formed and spot welded from 16 gauge galvanized steel.
- Drip-shield top and seam-free sides, front and back.
- Galvanized steel hinge has stainless steel pin.
- Provisions for padlocking on zinc-plated draw pull catch.
- Easily removed knockouts on bottom of enclosure.
- Panel studs provided for mounting optional panels.
- External mounting feet.
- Oil resistant gaskets are permanently secured.

Finish

- Enclosure and cover are finished in ANSI 61 gray powder coating.

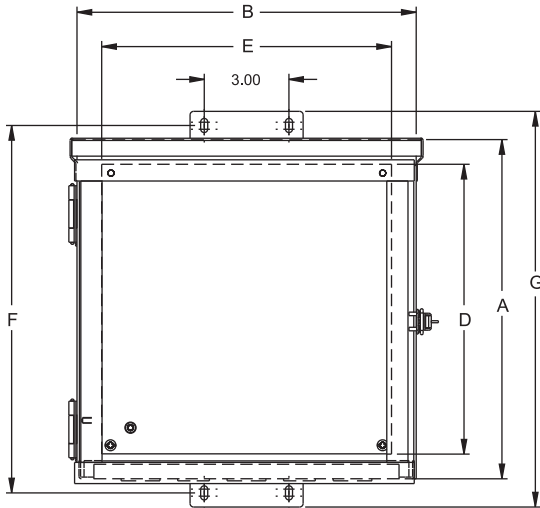
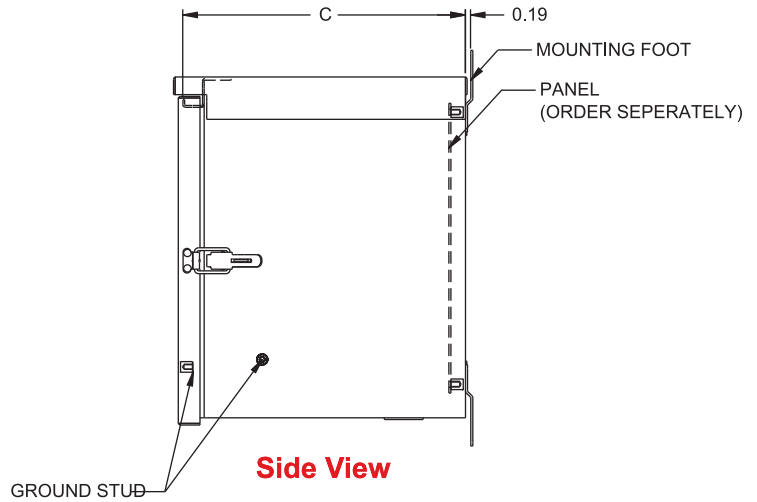
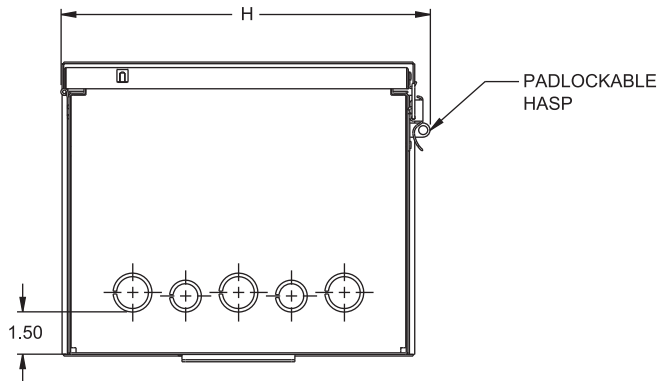
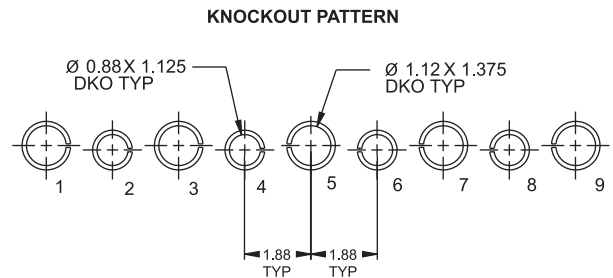
Accessories

- Inner Panel...see next page

Small Hinged Cover Enclosures with Knockouts

NEMA 3R

Commercial Enclosures


Front View - Cover Removed

Side View

Bottom View


Part No.	Optional Panel Part Number	Panel Size					Mounting F	Overall Dimensions			Knockout Pattern	Shipping Wt. lbs
		A	B	C	D	E		G	H			
C3R644HCR	N1JP64	6	4	4	4.25	2.25	7.00	8.00	5.10	2-3-4	3	
C3R664HCR	N1JP66	6	6	4	4.25	4.25	7.00	8.00	7.10	2-3-4	5	
C3R864HCR	N1JP86	8	6	4	6.25	4.25	9.00	10.00	7.10	2-3-4	6	
C3R886HCR	N1JP88	8	8	6	6.25	6.25	9.00	10.00	9.10	6-7-8-9	8	
C3R1086HCR	N1JP108	10	8	6	8.25	6.25	11.00	12.00	9.10	6-7-8-9	9	
C3R12106HCR	N1JP1210	12	10	6	10.25	8.25	13.00	14.00	11.10	3-4-5-6-7	11	
C3R12126HCR	N1JP1212	12	12	6	10.25	10.25	13.00	14.00	13.10	3-4-5-6-7	13	
C3R121210HCR	N1JP1212	12	12	10	10.25	10.25	13.00	14.00	13.10	3-4-5-6-7	20	

Medium Hinged Cover Enclosures without Knockouts

NEMA 3R

Commercial Enclosures



Panel
Sold
Separately



Application

- Designed for use as a wiring/ junction box.
- Provides protection against rain, sleet, snow and dripping water.

Standards

- UL-50 Type 3R
- CSA Type 3R
- **Complies with**
 - NEMA Type 3R
 - IEC 60529, IP24

Construction

- Formed and spot welded from 16 or 14 gauge galvanized steel.
- Drip shield top and seam-free sides, front and back.
- Stainless steel continuous hinge.
- Cover fastened with captive plated screws.
- Padlocking hasp.
- Collar studs provided for mounting optional panels.
- External mounting feet.
- Oil resistant gaskets are permanently secured.

Finish

- Enclosure and cover are finished inside and out in ANSI 61 gray powder coating.

Accessories

- Inner Panel...*see below*

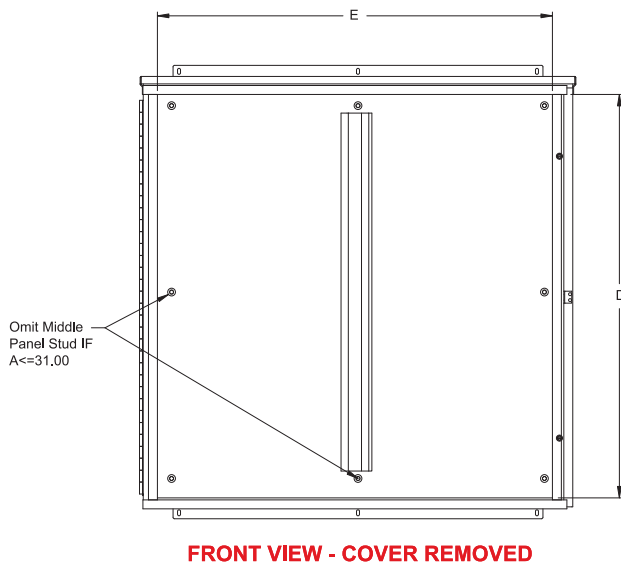
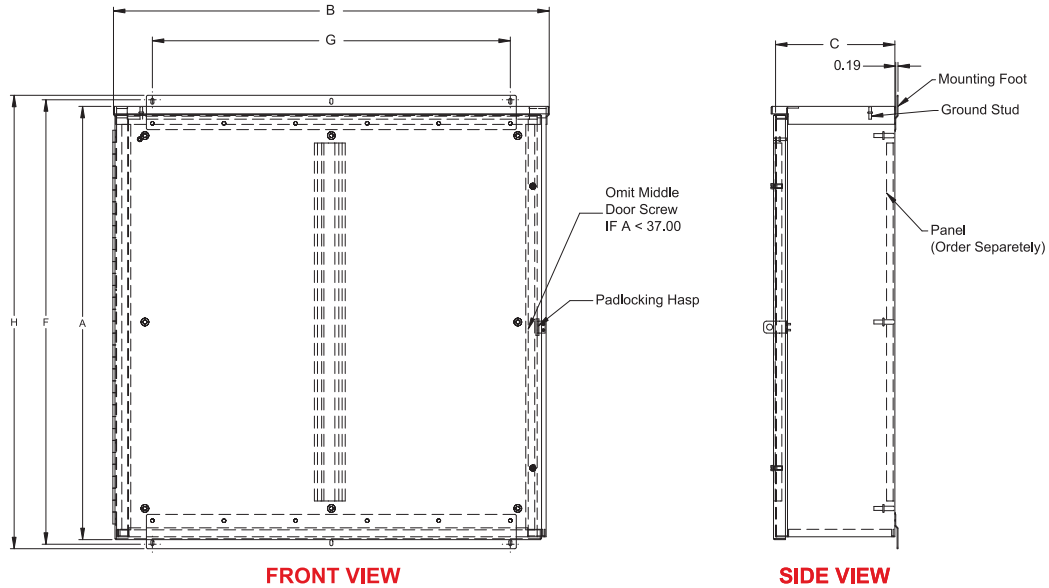
Part No.	Optional Panel Part Number	Panel Size					Mounting		Overall H	Shipping Wt. lbs
		A	B	C	D	E	F	G		
C3R16126HCR	18P1309	16	12	6	13.00	9.00	17.00	5.00	18.00	17
C3R16166HCR	18P1313	16	16	6	13.00	13.00	17.00	13.00	18.00	18
C3R18186HCR	18P1515	18	18	6	15.00	15.00	19.00	13.00	20.00	20
C3R20166HCR	18P1713	20	16	6	17.00	13.00	21.00	13.00	22.00	25
C3R20208HCR	18P1717	20	20	8	17.00	17.00	21.00	13.00	22.00	38
C3R24208HCR	18P2117	24	20	8	21.00	17.00	25.00	13.00	26.00	41
C3R24248HCR	18P2121	24	24	8	21.00	21.00	25.00	13.00	26.00	53
C3R30248HCR	18P2721	30	24	8	27.00	21.00	31.00	13.00	32.00	62
C3R30308HCR	18P2727	30	30	8	27.00	27.00	31.00	27.00	32.00	64
C3R181810HCR	18P1515	18	18	10	15.00	15.00	19.00	13.00	20.00	22
C3R242410HCR	18P2121	24	24	10	21.00	21.00	25.00	13.00	26.00	59
C3R302410HCR	18P2721	30	24	10	27.00	21.00	31.00	13.00	32.00	71

Technical references and CAD downloads available at www.hammondmfg.com

All dimensions in inches unless specified otherwise

Medium Hinged Cover Enclosures without Knockouts

NEMA 3R



Commercial Enclosures

Part No.	Optional Panel Part Number	Panel Size					Mounting		Overall H	Shipping Wt. lbs
		A	B	C	D	E	F	G		
C3R363610HCR	18P3333	36	36	10	33.00	33.00	37.00	30.00	38.00	82
C3R303012HCR	18P2727	30	30	12	27.00	27.00	31.00	27.00	32.00	102
C3R362412HCR	18P3321	36	24	12	33.00	21.00	37.00	13.00	38.00	102
C3R363012HCR	18P3327	36	30	12	33.00	27.00	37.00	27.00	38.00	103
C3R423012HCR	18P3927	42	30	12	39.00	27.00	43.00	27.00	44.00	113
C3R363612HCR	18P3333	36	36	12	33.00	33.00	37.00	27.00	38.00	119
C3R423612HCR	18P3933	42	36	12	39.00	33.00	43.00	27.00	44.00	131
C3R483612HCR	18P4533	48	36	12	45.00	33.00	49.00	27.00	50.00	153
C3R603612HCR	18P5733	60	36	12	57.00	33.00	61.00	27.00	62.00	176
C3R303016HCR	18P2727	30	30	16	27.00	27.00	31.00	27.00	32.00	105
C3R483616HCR	18P4533	48	36	16	45.00	33.00	49.00	27.00	50.00	155

Technical references and CAD downloads available at www.hammondmfg.com

All dimensions in inches unless specified otherwise

Quality Products. Service Excellence.

Hinged Cover Lift-Off Enclosures without Knockouts

NEMA 3R

Commercial Enclosures


**Panel
Sold
Separately**



Application

- Designed for use as a wiring/junction box.
- Provides protection against rain, sleet, snow and dripping water.

Standards

- UL-50 Type 3R
- CSA Type 3R
- **Complies with**
 - NEMA Type 3R
 - IEC 60529, IP24

Construction

- Formed and spot welded from 16 or 14 gauge galvanized steel.
- Extended height door and seam-free sides, front and back.
- Galvanized steel lift-off hinges with stainless steel pins.
- Cover fastened securely with zinc plated draw pull catches.
- Provisions for padlocking on zinc-plated draw pull catch.
- Embossed mounting holes on back.
- Oil resistant gaskets are permanently secured.

Finish

- Enclosure and cover are finished in ANSI 61 gray powder coating.

Accessories

- Panel mounting kit...*see below*
- Inner panel...*see below*
- Mounting feet...*see below*

Part Number	Optional Panel	Optional Panel Mounting Kit	Optional Mount Foot Kit	A	B	C	Optional Panel Size	Mount D	Mount E	Overall Dim.				Body Gauge	Ship Wt. lbs
C3R864HCLO	14R0505	C3RHCLPK1	C3RHCLOMFK1	8	6	4	4.88 4.88	9	10	7.12	0.88	1.88	16	5	
C3R886HCLO	14R0705	C3RHCLPK1	C3RHCLOMFK1	8	8	6	6.75 4.88	9	10	9.12	0.88	1.88	16	7	
C3R1086HCLO	14R0707	C3RHCLPK1	C3RHCLOMFK1	10	8	6	6.75 6.88	11	12	9.12	0.88	1.88	16	9	
C3R12106HCLO	14R0909	C3RHCLPK1	C3RHCLOMFK1	12	10	6	8.75 8.88	13	14	11.12	0.88	1.88	16	11	
C3R12126HCLO	14R1109	C3RHCLPK1	C3RHCLOMFK1	12	12	6	10.75 8.88	13	14	13.12	0.88	1.88	16	12	
C3R16126HCLO	14R1311	C3RHCLPK1	C3RHCLOMFK1	16	12	6	12.75 10.88	17	18	13.12	0.88	1.88	16	15	
C3R16166HCLO	18P1313	C3RHCLPK2	C3RHCLOMFK2	16	16	6	13.00 13.00	17	18	17.12	2.38	2.38	16	23	
C3R20166HCLO	18P1713	C3RHCLPK2	C3RHCLOMFK2	20	16	6	17.00 13.00	21	22	17.12	2.38	2.38	16	27	
C3R20208HCLO	18P1717	C3RHCLPK2	C3RHCLOMFK2	20	20	8	17.00 17.00	21	22	21.12	2.38	2.38	16	36	
C3R24208HCLO	18P2117	C3RHCLPK2	C3RHCLOMFK2	24	20	8	21.00 17.00	25	26	21.12	2.38	2.38	16	43	
C3R24248HCLO	18P2121	C3RHCLPK2	C3RHCLOMFK2	24	24	8	21.00 21.00	25	26	25.12	2.38	2.38	14	49	
C3R30248HCLO	18P2721	C3RHCLPK2	C3RHCLOMFK2	30	24	8	27.00 21.00	31	32	25.12	2.38	2.38	14	57	

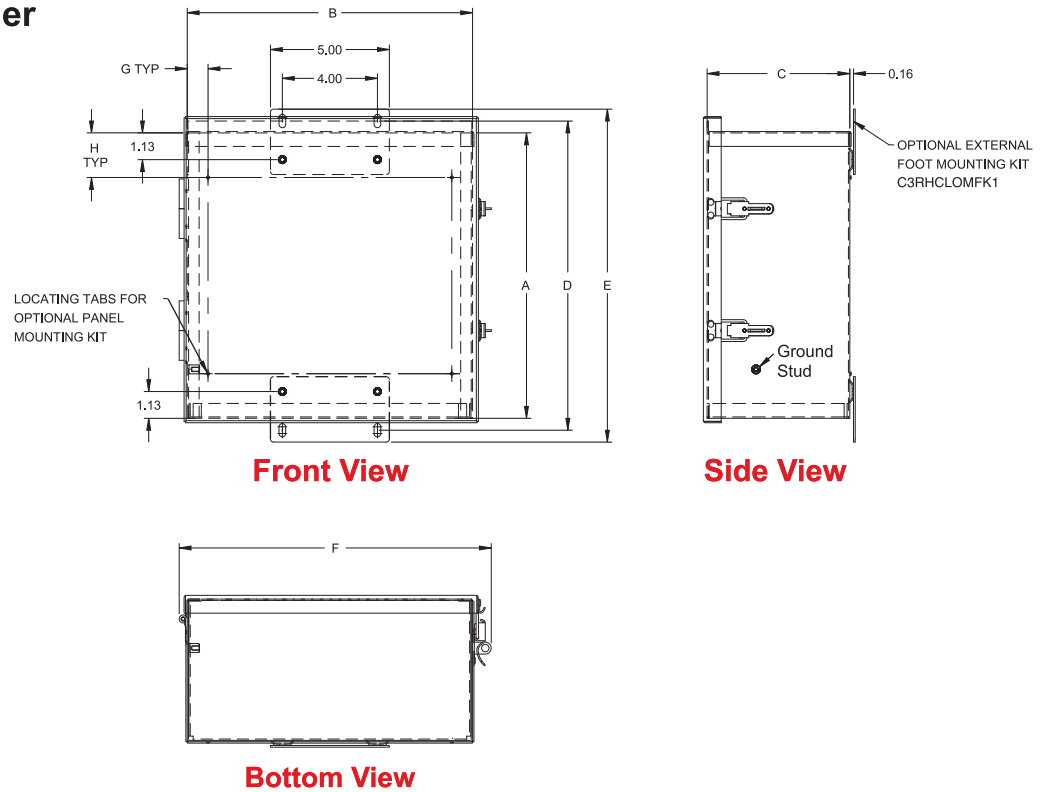
 Technical references and CAD downloads available at www.hammondmfg.com

All dimensions in inches unless specified otherwise

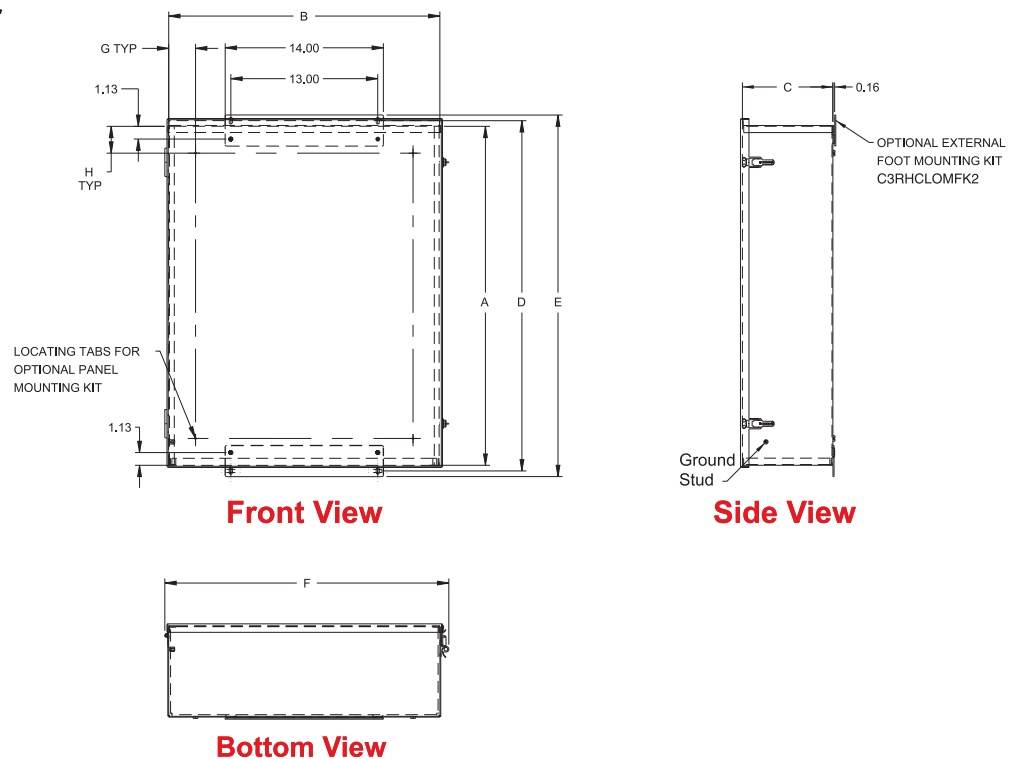
Hinged Cover Lift-Off Enclosures without Knockouts

NEMA 3R

16x12 and Smaller



16x16 and Larger



Commercial Enclosures

