



# SERVICE PARTS LIST

**BULLETIN NO.**  
**54-07-2400**

<b>SPECIFY CATALOG NO. AND SERIAL NO. WHEN ORDERING PARTS</b>		REVISED BULLETIN	DATE
<b>M12™ HEATED JACKET</b>			Sept. 2010
<b>CATALOG NO.</b>	<b>2330M, 2330L, 2330XL, 23302X</b>	WIRING INSTRUCTION	

**EXAMPLE:**

00 0

Component Parts (Small #)  
Are Included When Ordering  
The Assembly (Large #).

- 2330M** M12 Heated Jacket - Medium
- 2330L** M12 Heated Jacket - Large
- 2330XL** M12 Heated Jacket - Extra Large
- 23302X** M12 Heated Jacket - Extra Large (2X)



**M12™ HEATED JACKET BATTERY HOLDER**

<b>CATALOG NO. 43-72-1000</b>	<b>SERIAL NUMBER C75A</b>
-------------------------------	---------------------------

**No. 43-72-1000 Battery Holder**

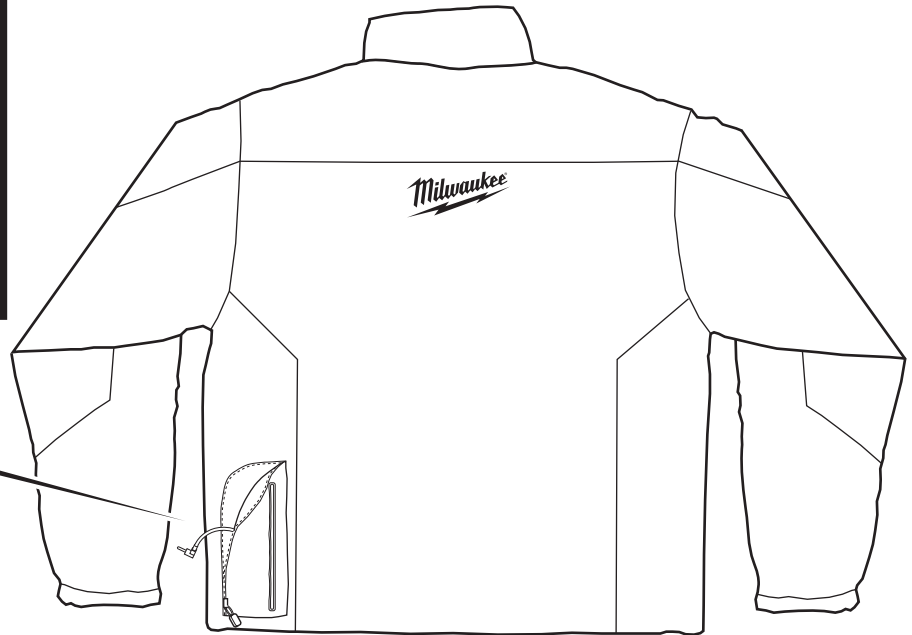


FIG.	PART NO.	DESCRIPTION OF PART	NO. REQ.	FIG.	NOTES
1	43-72-1000	Battery Holder	(1)	2, 3	A clean, dry surface is essential for proper performance for any adhesive system. The area intended for application of any adhesive label or nameplate must be prepared by cleaning with isopropyl alcohol. The solvent is to be applied with a clean, lint free applicator and the surface allowed to dry before applying the label or nameplate.
2	12-20-2330	Service Nameplate - Battery Holder	(1)		
3	10-20-2318	Warning Label - Battery Holder	(1)		

**205 Westwood Ave**  
**Long Branch, NJ 07740**  
**1-877-742-TEST (8378)**  
**Fax: (732) 222-7088**  
**salesteam@Equipment.NET**