

**Description of communication protocols
of Tx3xx and Tx4xx transmitters
with RS232 and RS485
communication interface**

Table of content

DESCRIPTION OF COMMUNICATION PROTOCOLS 4

- MODBUS RTU..... 4
 - Supported functions*..... 4
 - Jumper and button*..... 4
 - Modbus registers of the device*..... 5
 - Example of communication* 6
 - Reading of temperature, address 0x0031 6
 - Reading of relative humidity, address 0x0032 7
 - Reading of computed value, address 0x0033 7
 - Reading of all values at once, address block 0x0031 to 0x0033 7
 - Description of supported function*..... 8
 - 03 (0x03): Reading of 16-bit registers (Read Holding Registers)..... 8
 - 04 (0x04): Reading 16-bit input gates (Read Input Registers)..... 9
 - 16 (0x10): Setting of several 16-bit registers (Write Multiple Registers)..... 9
 - Exception Responses..... 11
 - Exception codes..... 12
 - Modbus CRC* 12
 - Procedure during calculation of Modbus CRC 12
- PROTOCOL COMPATIBLE WITH ADVANTECH-ADAM STANDARD 13
 - Jumper*..... 13
 - General syntax of commands* 13
 - Description of supported functions* 14
 - Command for devices with temperature OR atmospheric pressure OR CO₂ measurement ONLY*..... 14
 - Reading of temperature OR atmospheric pressure 14
 - Commands for combined devices* 14
 - Reading of all measured values at once 14
 - Reading of the temperature* 15
 - Reading of humidity* 15
 - Reading of computed value* 15
 - Reading of atmospheric pressure* 15
 - Reading of CO₂* 15
 - Error states*..... 15
 - Commands common for all device types* 16
 - Query to adjusted configuration 16
 - Reading of device name 16
 - Reading of firmware version 16
 - Configuration of device*..... 16
 - Response of the device 17
 - Check sum (CRC)*..... 17
 - How to read device's unit setting from master device* 17
 - Examples of communication*..... 17
 - Format of data*..... 19
- ARION COMMUNICATION PROTOCOL - AMIT COMPANY 19
 - Supported frames*..... 19
 - Jumper and button*..... 19

<i>Supported function description</i>	20
COMMUNICATION WITH HWG POSEIDON UNITS	21
<i>Jumper</i>	21
<i>Description of supported commands</i>	22
Read temperature.....	22
Read humidity	22
Read computed value	22
Read pressure	22
Change of device address.....	22
Device identification	23
SETTING OF DEVICE WITH HYPERTERMINAL	24

Description of communication protocols

Devices of Txxxx series with RS485 and RS232 serial interface support to select one of the communication protocols described lower.

Devices are preset from the manufacturer to Modbus RTU communication protocol. If you would like to use different communication protocol than Modbus RTU, it is necessary preset them through user's software. **Use user's software *Tsensor* for setting of all device parameters (recommended). It is free to download at www.cometsystem.cz.** It supports make the adjustment of the device too. This procedure is described at file „*Calibration manual.pdf*“ which is installed commonly with the software. Change of some parameters is possible to do without user's software with Windows Hyperterminal (change of communication protocol, its parameters, LCD display setting). It is described at the end of this document.

Modbus RTU

Control units communicate on master-slave principle in half-duplex operation. Only master can send request and only addressed device responds. During sending of request no other slave station should respond. During communication, data transfer proceeds in binary format. Each Byte is sent as eight bit data word in format: 1 start bit, data word 8 bit (LSB first), 2 stop bits¹, without parity. Device supports communication speed from 110Bd to 115200Bd. Available address range is from 0 to 255, address 0 is reserved for broadcast and device doesn't send reply for it.

For more detailed communication protocol description see www.modbus.org.

Supported functions

03 (0x03): Reading of 16-bit registers (Read Holding Registers)

04 (0x04): Reading of 16-bit input gates (Read Input Registers)

16 (0x10): Setting of more 16-bit registers (Write Multiple Registers)*²

Jumper and button

Jumper and button are located next to connection terminals. If communication protocol **Modbus is selected** the function of jumper and button is as follows:

- Jumper opened – device memory is protected from writing, from device side it is only enabled to read measured value, writing to memory is disabled (no change of device address, communication speed and LCD setting is enabled)
- Jumper closed – writing to device memory is enabled by means of User's software or function *16 (0x10): Setting of several 16-bit registers (Write Multiple Registers)*
- **Up to device firmware version 02.30:**
(devices support temperature measurement in °C **only**, don't support °F)
 - Jumper closed and button pressed for longer than **three** seconds – causes restoring of manufacturer setting of communication protocol, i.e. sets device address to 01h and communication speed to 9600Bd

¹ Device sends two stop bits, for receive one stop bit is enough.

² See detailed description of this function.

- **Since** firmware version **02.31** – included
(devices support temperature measurement in °C or °F and all with pressure measurement):
 - Jumper closed and button pressed for longer than **six** seconds – causes restoring of manufacturer setting of **communication protocol**, i.e. sets Modbus RTU communication protocol, device address sets to 01h and communication speed to 9600Bd (after button press there is “dEF” message blinking at LCD display. Six seconds later message “dEF” stays shown, it means manufacturer setting of **communication protocol** is done).
- Jumper opened and button shortly pressed – device goes to Info mode.

Modbus registers of the device

Variable	Unit	Address[hex] ^X	Address[dec] ^X	Format	Size	Status
Measured temperature	[°C, °F]*	0x0031	49	Int*10	BIN16	R
Address of device	[-]	0x2001	8193	Int	BIN16	R/W*
Code of communication speed	[-]	0x2002	8194	Int	BIN16	R/W*
Serial number of device Hi	[-]	0x1035	4150	BCD	BIN16	R
Serial number of device Lo	[-]	0x1036	4151	BCD	BIN16	R
Version of Firmware Hi	[-]	0x3001	12289	BCD	BIN16	R
Version of Firmware Lo	[-]	0x3002	12290	BCD	BIN16	R

And next only for combined devices with relative humidity measurement

Variable	Unit	Address[hex] ^X	Address[dec] ^X	Format	Size	Status
Measured relative humidity	[%]	0x0032	50	Int*10	BIN16	R
Computed value *	[°C, °F]	0x0033	51	Int*10	BIN16	R
Since firmware version 02.44 there is support of all computed values at once, read registers:						
Dew point temperature *	[°C, °F]	0x0035	53	Int*10	BIN16	R
absolute humidity	g / m ³	0x0036	54	Int*10	BIN16	R
specific humidity	g / kg	0x0037	55	Int*10	BIN16	R
mixing ratio	g / kg	0x0038	56	Int*10	BIN16	R
specific enthalpy	kJ / kg	0x0039	57	Int*10	BIN16	R

And next only for combined devices with atmospheric pressure measurement

Variable	Unit*	Address[hex] ^X	Address[dec] ^X	Format	Size	Status
Atmospheric pressure	hPa	0x0034	52	Int*10	BIN16	R
	PSI			Int*1000		
	inHg			Int*100		
	mBar			Int*10		
	oz/in ²			Int*10		
	mmHg			Int*10		
	inH ₂ O			Int*10		
	kPa			Int*100		

And next only for combined devices with carbon dioxide measurement

Variable	Unit	Adress [hex] ^x	Adress [dec] ^x	Format	Size	Status
CO2 concentration Fast mode value (nonaveraged)	ppm	0x0054	84	Int	BIN16	R
CO2 concentration Slow mode value (averaged)	ppm	0x0055	85	Int	BIN16	R
CO2 concentration as shown al LCD (non/averaged value by device setting)	ppm	0x0034	52	Int	BIN16	R

Explanation:

- * depends on device type and setting (User's software)
- Int*10 register is in format integer*10
- R register is designed only for reading
- W* register is designed for writing, for details see description function 16 (0x10): *Setting of several 16-bit registers (Write Multiple Registers)*
- ^x register addresses are indexed from zero – register 0x31 is physically sent as value 0x30, 0x32 as 0x31 (zero based addressing).

Note: In case there is a need for reading of measured values from device with higher resolution than one decimal, measured values in device are stored also in „Float“ format, which is not directly compatible with IEEE754.

Example of communication

In all examples communication with device at address 01h is supposed

Reading of temperature, address 0x0031

Modbus command:

```

device address:      01
reading 16-bit registers  03
initial address Hi    00
initial address Lo    31
number read registers Hi  00
number read registers Lo  01
  
```

Via link is physically sent: 01 03 00 30 00 01 84 05

Received response from device: 01 03 02 00 F4 B9 C3

```

device address:      01
reading 16-bit registers  03
Number Byte          02
State of register Hi  00
State of register Lo  F4    (0x00F4 i.e. 244 i.e. 24.4 °C)
Modbus CRC Lo       B9
Modbus CRC Hi       C3
  
```

Reading of relative humidity, address 0x0032

Modbus command:

device address:	01
reading 16-bit registers	03
initial address Hi	00
initial address Lo	32
number read registers Hi	00
number read registers Lo	01

Via link is physically sent: 01 03 00 31 00 01 D5 C5

Received response from device: 01 03 02 01 6C B9 F9

device address:	01
reading 16-bit registers	03
Number Byte	02
State of register Hi	01
State of register Lo	6C (0x016C i.e. 364 i.e. 36.4 %RH)
Modbus CRC Lo	B9
Modbus CRC Hi	F9

Reading of computed value, address 0x0033

Modbus command:

device address:	01
reading 16-bit registers	03
initial address Hi	00
initial address Lo	33
number read registers Hi	00
number read registers Lo	01

Via link is physically sent: 01 03 00 32 00 01 25 C5

Received response from device: 01 03 02 FF 3E 78 64

device address:	01
reading 16-bit registers	03
Number Byte	02
State of register Hi	FF
State of register Lo	3E (0xFF3E i.e. -194 i.e. -19.4)
Modbus CRC Lo	78
Modbus CRC Hi	64

Reading of all values at once, address block 0x0031 to 0x0033

Modbus command:

device address:	01
reading 16-bit registers	03
initial address Hi	00
initial address Lo	31
number read registers Hi	00
number read registers Lo	03

Via link is physically sent: 01 03 00 30 00 03 05 C4

Received response from device: 01 03 06 FF C4 01 14 FF 38 C5 71

device address:	01	
reading 16-bit registers	03	
Number Byte	06	
State of register Hi	FF	
State of register Lo	C4	(0xFFC4 i.e. -60 i.e. -6.0 °C)
State of register Hi	01	
State of register Lo	14	(0x0114 i.e. 276 i.e. 27.6 %RH)
State of register Hi	FF	
State of register Lo	38	(0xFF38 i.e. -200 i.e. -20.0 °C)*
Modbus CRC Lo	C5	
Modbus CRC Hi	71	

* Computed value is preset by factory to Dew Point Temperature, to choice use User's software

Description of supported function

03 (0x03): Reading of 16-bit registers (Read Holding Registers)

Function serves for reading of values from device. Addresses of available registers are listed in chapter *Modbus registers of the device* on page 5.

Request:

FUNCTION	Function code	0x03
DATA	Initial address Hi	0x??
	Initial address Lo	0x??
	Number of registers Hi	0x??
	Number of registers Lo	0x??

Response:

FUNCTION	Function code	0x03
DATA	Number of Bytes	0x??
	States of register Hi	0x??
	States of register Lo	0x??
	...	
	States of register Hi	0x??
	States of register Lo	0x??

Exceptional response:

FUNCTION	Function code	0x83
DATA	Exception code	0x??

During sending of query to device initial register address and number of registers to read are sent. Register addresses are indexed from zero – **register 0x31 is physically sent as value 0x30, 0x32 as 0x31...** (zero based addressing)

04 (0x04): Reading 16-bit input gates (Read Input Registers)

This function is also possible to use for reading values from device, syntax is the same as with function 03 (0x03): Reading of 16-bit registers. Addresses of available registers are specified in chapter *Modbus registers of the device* on page 5.

16 (0x10): Setting of several 16-bit registers (Write Multiple Registers)

Setting of device address and communication speed is possible to perform by writing to device registers (rest of parameters is possible to set only with User’s software).

Attention! **During writing to device registers it is not enabled to write any number of registers.** Always below procedure should be strictly followed. If procedure is not followed undoable loss of important settings stored in device can occur! **It is strongly recommended to use User’s software called TSensor to set all device parameters. It is free to download at www.cometsystem.cz .**

Request:

FUNCTION	Function code	0x10
DATA	Initial address Hi	0x??
	Initial address Lo	0x??
	Number of registers Hi	0x??
	Number of registers Lo	0x??
	Number of Bytes (of sent data)	0x??

Response:

FUNCTION	Function code	0x10
DATA	Initial address Hi	0x??
	Initial address Lo	0x??
	Number of registers Hi	0x??
	Number of registers Lo	0x??

Exceptional response:

FUNCTION	Function code	0x90
DATA	Exception code	0x??

For detailed description see next chapter.

Procedure during writing to device registers:

- device address is stored at Modbus address 0x2001 as binary number
- code of communication speed is stored at Modbus address 0x2002

Communication speed [Bd]	Code of communication speed [hex]
110	94F2
300	369D
600	1B4F
1200	0DA7
2400	06D4
4800	036A
9600	01B5
14400	0123
19200	00DA
38400	006D
56000	004B
57600	0049
115200	0024

1. Close jumper located next to connection terminals of the device.
2. Read entire area 0x2001 to 0x2040 to master device. At address 0x2040 check sum of entire area is stored. It is calculated as sum of 16bit values from addresses 0x2001 to 0x2039. Stored are lowest 16 bits of this sum - enables to check correct reading of the area.
3. Modify content corresponding to addresses 0x2001 and 0x2002 in master device as required. **Setting of the other values should not be changed!**
4. Calculate new check sum of entire area, i.e. sum of 16bit values corresponding to values at addresses 0x2001 to 0x2039 and store lowest 16 bits to position corresponding to address 0x2040.
5. Write such modified area together from master device to addresses 0x2001 to 0x2040.
6. Open jumper.

Example: Device with address 01h, communication speed 9600Bd, to change to address 9Fh and 115200Bd

For data area **reading** the following is sent via link: **01 03 20 00 00 40 4F FA**

- 01 device address
- 03 command for reading of 16-bit registers
- 20 00 initial address (sent address is indexed from zero, during Modbus request for reading of address 0x2001 physically is sent 0x2000 via link)
- 00 40 read 64 registers (0x40), i.e. 128 Byte
- 4F FA CRC of Modbus

response of the device is:

01 03 80 **00 01 01 B5** 00 00 30 30 3B 4B 77 D3 BD 35 00 00 00 00 00 00 00 00 00 00 00 00 00 00 00 84 70 00 00 86 2A 00 00 84 44 AA 80 85 07 A8 D0 57 7E 5F 94 F3 DC 00 12 2E DD 78 0C 40 AA 77 D3 F2 C4 00 12 17 78 77 F5 F3 EC 00 12 ED BF 77 D5 4F 10 77 D8 FF FF FF FF 40 DE 77 D3 2E F7 78 0C 06 5C 00 01 00 00 00 00 F3 DC 00 12 42 9F **53 2D** 2C 8C

2. If device does not receive all queries due to communication error, no response is sent. Main program is able to process condition of exceeding of time for query.
3. If device receives a query, but detects communication error (CRC), no response is sent. Main program is able to process condition of exceeding of time for query.
4. If device receives a query without communication error, but cannot process it, master device receives exception response, which informs master device on error nature.

Exception Response

- has two fields to distinguish it from normal response:

1. Function code field
2. Data field.

ad1 Function code field

In normal response of slave device function code of original query corresponds to function code of response. All function codes have most significant bit (MSB) equal to 0. In exception response slave device sets most significant bit of function code to 1. Main station recognizes exception response by means of this bit and can check data field for exception code.

ad2 Data field

Device returns exception code in exception response in data field. Event causing exception is determined this way.

Exception codes

0x01 Invalid function. Function code in query is not allowed action for device.

0x02 Invalid data address. Data address received in query is not allowed address for device.

Modbus CRC

Check sums of entire Modbus messages are mostly automatically inserted to the end of request by communication programs themselves. In case there is a need to insert to generate Modbus CRC to program itself, the way of calculation is as follows:

Procedure during calculation of Modbus CRC

1. To fill 16-bit register with value 0xFFFF (all bits set to 1). Let us call this register „CRC register“.
2. Perform logic function Exclusive OR with first eight bit message Byte with lower eight bits of CRC register. Store result to CRC register.
3. Shift content of CRC register of one bit to the right (towards to LSB), enter 0 as upper bit of CRC. Memorize values of lowest shifted bit (LSB).
4. If LSB was 0, then repeat step 3 (other shift).
If LSB was 1, then perform Exclusive OR CRC register with value 0xA001.
5. Repeat steps 3 and 4 as long as eight shifts proceed. After eight shifts eight bit Byte is processed.
6. Repeat steps 2 to 5 to the next of eight bit Byte of message as long as all Bytes are proceeded.
7. In the end after processing of all message Bytes check sum value is stored in CRC register.
8. During connection of check sum to the message lower Byte of CRC register is sent as first, then upper Byte of CRC register.

Protocol compatible with Advantech-ADAM standard

Control units communicate on master-slave principle in half-duplex operation. Only master can send requests and only addressed device responds. During sending request any of slave devices should respond. During communication data is transferred in ASCII format (in characters). Each Byte is sent as two ASCII characters (value 0x2F is sent as pair of characters 0x32, 0x46, i.e. characters „2“ and „F“). **All commands and values MUST be entered in CAPITAL LETTERS !** Device supports communication speed from 1200Bd to 115200Bd, parameters of communication link are 1 start bit + eight bit data word (LSB first) + 1 stop bit, without parity. Commands for reading of measured values are different for devices with temperature measurement only and for combined devices with temperature and relative humidity measurement – see later.

Jumper

Its location is described into User's manual. If communication protocol compatible with standard Advantech-ADAM is selected, its function is the following:

- If jumper during switching ON the power is closed, device always communicates with following parameters regardless stored setting in the device: communication speed 9600 Bd, without check sum, device address 00h
- If jumper during switching ON the power is not closed, device communicates in accordance with stored setting.
- If jumper is closed during device operation, device temporarily changes its address to 00h, it will communicate in the same communication speed as before closing jumper and will communicate without check sum. After jumper is opened setting of address and check sum is reset in accordance with values stored in device.
- Communication speed and check sum are possible to change only if jumper is closed (see chapter *Configuration of device*).
- **Since** firmware version **02.31** – included (devices support temperature measurement in °C **or** °F and all with pressure measurement):
Jumper closed and button pressed for longer than six seconds – causes restoring of manufacturer setting **of communication protocol**, i.e. sets **Modbus RTU** communication protocol, **device address** sets to **01h** and communication speed to **9600Bd** (after button press there is “dEF” message blinking at LCD display. Six seconds later message “dEF” stays shown, it means manufacturer setting **of communication protocol** is done). Older FW versions DON'T support this feature.
- **Since** firmware version **02.60 ADAM #AA command** support **added** for multi channel devices. **It returns all measured values at once**. It is used by ADAM OPC server 3.01 (module 4017) in example.

General syntax of commands

[distinguishing character][device address][command][data][check sum][CR]

Valid **distinguishing characters** towards to device are: \$, #, %

Device address contents 2 ASCII bytes in hexadecimal code (upper case letters) representing one byte of binary address (e.g. „3“ „F“ corresponds to address 3Fh, i.e. 63, is sent as 0x33, 0x46)

Check sum: enabled to switch ON/switch OFF

CR ... 1 byte (0Dh)

Description of supported functions

Command for devices with temperature OR atmospheric pressure OR CO₂ measurement ONLY

Reading of temperature OR atmospheric pressure

Syntax command: **#AA cr**

Response: > (temperature/pressure/CO₂) cr (e.g. >-012.30 cr)

Data format: temperature, humidity, computed value: >±xxx.x0 cr

pressure

Unit**	Format	Example
hPa	>+xxxx.x cr	>+1013.1
PSI	>+xx.xxx cr	>+14.123
inHg	>+xxx.xx cr	>+028.12
mBar	>+xxxx.x cr	>+1013.1
oz/in ²	>+xxxx.x cr	>+0225.1
mmHg	>+xxxx.x cr	>+0728.1
inH ₂ O	>+xxxx.x cr	>+0380.1
kPa	>+xxx.xx cr	>+101.12

CO₂ >±xxxxx cr

Commands for combined devices

(with temperature and/or relative humidity and/or atmospheric pressure and/or CO₂ measurement)

Reading of all measured values at once

Command supported since FW version 02.60, used i.e. in ADAM OPC Server version 3.01.

Syntax command: **#AA cr**

Response: > (temperature)(relative humidity)(dew poin temperature)(absolute humidity) (specific humidity)(mixing ratio)(specific enthalpy)(pressure*/CO₂ concentration *)cr

* ... if the value is supported, used units by device configuration.

Data format: >±xxx.x0±xxx.x0±xxx.x0±xxx.x0±xxx.x0±xxx.x0±xxx.x0 cr

Respectively for devices with pressure or CO₂ concentration:

>±xxx.x0±xxx.x0±xxx.x0±xxx.x0±xxx.x0±xxx.x0±xxx.x0+xxxx.x (hPa)
 +xx.xxx (PSI)
 +xxx.xx (inHg)
 +xxxx.x (mBar)
 +xxxx.x (oz/in²)
 +xxxx.x (mmHg)
 +xxxx.x (inH₂O)
 +xxx.xx (kPa)
 ±xxxxx (CO₂)

Response example for request #01(cr)

>+030.20+033.90+012.60+010.40+009.40+009.50+054.70+0969.8(cr)

Reading of the temperature*

Syntax command: **#AA0 cr**
Response: > (temperature) cr (e.g. >-012.30 cr)
Data format: **>±xxx.x0 cr**

Reading of humidity*

Syntax command: **#AA1 cr**
Response: > (humidity) cr (e.g. >+044.30 cr)

Reading of computed value*

Syntax command: **#AA2 cr**
Response: > (computed value) cr (e.g. >+004.30 cr)
Data format: **>±xxx.x0 cr**

Reading of atmospheric pressure*

Syntax command: **#AA3 cr**
Response: > (atmospheric pressure) cr (e.g. >+1013.2 cr)

Attention!

Atmospheric pressure is stored in next format (depends on selected unit):

Unit**	Format	Example
hPa	>+xxxx.x cr	>+1013.1
PSI	>+xx.xxx cr	>+14.123
inHg	>+xxx.xx cr	>+028.12
mBar	>+xxxx.x cr	>+1013.1
oz/in ²	>+xxxx.x cr	>+0225.1
mmHg	>+xxxx.x cr	>+0728.1
inH ₂ O	>+xxxx.x cr	>+0380.1
kPa	>+xxx.xx cr	>+101.12

Reading of CO₂*

Syntax command: **#AA3 cr**
Response: > (CO₂ concentration) cr (e.g. >+01200 cr)
Data format: **>±xxxxx cr**

* Depends on the device type and setting. If the value is not supported, returns still ? AA cr

** Depends on device setting (Use User's software TSensor)

Error states

>-0000 cr lower limit of temperature, error in measurement of humidity, computed value, atmospheric pressure, CO₂ measurement or startup initialization is in progress (up to 20s after power up).

>+9999 cr upper limit of temperature, error in measurement of humidity and computed value. Is NOT used for atmospheric pressure and CO₂ error alarm.

Commands common for all device types

Query to adjusted configuration

Syntax command: **\$AA2 cr**

Response: **!AATCCFF cr** symbols correspond with paragraph "Configuration of device"

Reading of device name

Syntax command: **\$AAM cr**

Response: **!AATxxxx cr** (!01T3411 cr accordingly with device model)

Reading of firmware version

Syntax command: **\$AAF cr**

Response: **!AA(version) cr** reads version number of device firmware

Configuration of device

Syntax of command: **%AANNTTCCFF cr**

Meaning of symbols:

AA ... current address of device 00...FF (hexadecimal)

NN ... new address of device 00...FF (hexadecimal)

TT ... code of device: 2Bh... devices with temperature OR atmospheric pressure measurement ONLY

2Ch... combined devices of temperature and/or humidity and/or atmospheric pressure

CC ... code of communication speed

Code	Speed [Bd]
03	1200
04	2400
05	4800
06	9600
07	19200
08	38400
09	57600
0A	115200

FF ... data format and check sum:

D7	D6	D5	D4	D3	D2	D1	D0
----	----	----	----	----	----	----	----

xxxx xx00 format "Engineering units"

x0xx xx00 check sum switched OFF

x1xx xx00 check sum switched ON

- Communication speed and check sum are possible to change only if jumper is closed
 - Change in communication speed activates only after device power is switched OFF and switched ON again.

- Change in setting of check sum activates immediately after jumper is opened
- If address is changing
 - and jumper is closed, device responds with address 00h again, and newly set address will be activated after jumper is opened.
 - and jumper is not closed, change is activated immediately.
- If attempt occurs to write incorrect data to the device (and syntax is correct), device responds with error message.

Response of the device

1. If syntax of command is not correct, device does not respond at all (e.g. no check sum is received though it is switched ON, check sum is not correct, string is not complete or contents invalid character).
2. If syntax is correct, but required operation is not correct, device returns error message in format
? AA cr
this state appears if we try to change communication speed and check sum and jumper is not closed.
3. If command is executed, device responds:
! AA cr

Check sum (CRC)

It is the sum of all characters before it, its lowest byte is applied.

How to read device's unit setting from master device

If you have installed devices into your system and you need to read device's unit setting for temperature (°C or °F) or for pressure (hPa, PSI, inHg, mBar, oz/in², mmHg, inH₂O or kPa) it is possible (with Modbus protocol only). It is necessary to read from Modbus address 0x203F (8255 dec). Received value can discover unit setting by next rules:

- Combination of the two lowest bits Bit0 and Bit1 describes temperature setting: 0...°C, 1...°F, 2 and 3 not used yet.
- Combination of Bits 2, 3 and 4 describes pressure unit: 0 = hPa, 1 = PSI, 2 = inHg, 3 = mBar, 4 = oz/in², 5 = mmHg, 6 = inH₂O, 7 = kPa.

For example received value is:

0x0000, it means hPa and °C

0x0015, it means mmHg and °F

0x001C, it means kPa and °C

Examples of communication

Example 1: Change of device address during operation (without closed jumper, CRC switched OFF)

Device, which had address 23h is configured to address 24h, speed 9600 Bd, without CRC, setting of communication speed and CRC must not change (setting

of communication speed and CRC is not possible to change without closed jumper).

Command: **%23242C0600 cr**

Response: **!24 cr**

Example 2: Reading of temperature from device with temperature measurement **only**, without closed jumper, device address 01h, without check sum.

- without check sum

Command: **#01 cr**

Response: **> +020.50 cr**

- with check sum:

Command: **#01 84 cr**

where it is sent: 23 30 31 **38 34** 0D

calculation of CRC: $23h+30h+31h = 84h$, then CRC = **84h**, it is sent as **0x38, 0x34**

Response: **>+020.50 8E cr**

where it is sent: 3E 2B 30 32 30 2E 35 30 **38 45** 0D

calculation of CRC: $3Eh+2Bh+30h+32h+30h+2Eh+35h+30h=18Eh$ then CRC = **8Eh**, then it is sent as **0x38, 0x45**

Example 3: Reading of temperature from **combined device** (temperature and relative humidity measurement) without closed jumper, device address 01h.

- without check sum

Command: **#010 cr**

Response: **> +020.50 cr**

- with check sum:

Command: **#010 B4 cr**

where it is sent: 23 30 31 30 **42 34** 0D

calculation of CRC: $23h+30h+31h+30h = B4h$, then CRC = **B4h**, it is sent as **0x42, 0x34**

Response: **>+020.50 8E cr**

where it is sent: 3E 2B 30 32 30 2E 35 30 **38 45** 0D

calculation of CRC: $3Eh+2Bh+30h+32h+30h+2Eh+35h+30h=18Eh$ then CRC = **8Eh**, then it is sent as **0x38, 0x45**

Example 4: Setting of device to address 9F, communication speed remains 9600 Bd, check sums are switched ON (jumper should be closed because setting of CRC will be changed):

- with jumper, device always reports from address „00“ without CRC

Command: **%009F2C0640 cr**

Response: **!00**

After jumper is opened device address changes to 9Fh

Format of data

Device uses data format „Engineering units“, i.e. fixed decimal point. Temperature, humidity and computed value are displayed with 2 digits behind decimal point, second digit behind decimal point is always zero. Atmospheric pressure display depends on selected pressure unit, see command description for ”Reading of atmospheric pressure*” on page 15. CO₂ values are at >±xxxxx format .

General writing: „>±xxx.x0 cr“ (except of pressure and CO₂)

Examples: >-050.20 cr >+000.00 cr >+025.80 cr

ARION communication protocol - AMiT company

The device supports communication protocol ARION version 1.00, simplex and half duplex modes and communication speeds 9600, 19200, 38400 and 57600 Baud. There is NOT supported CO₂ measurement.

Supported frames

0x20	ACK	Positive response
0x21	NAK	Negative response
0x22	STRQ (Resp.req. must be 1)	Status request
0x23	STT	Slave status, mode, guard time
0x24	MODE	Set Mode
0x26	VRRQ (Resp.req. must be 1)	Request for firmware and protocol version
0x27	VER	Response of firmware and protocol version
0x28	IDRQ (Resp.req. must be 1)	Module identification request
0x29	MID	Module identification
0x2A	FTRQ (Resp.req. must be 1)	Request for list of supported frames
0x2B	FTL	List of supported frames
0x2C	CLRQ (Resp.req. must be 1)	Request for class of module
0x2D	CLS	Class of module
0x30	DTRQ (Resp.req. must be 1)	Data request
0x56	data	24 analog values by 14 bit
0x58	data	8 analog values by 21 bit
0x80+Address+Response Request		Start of frame
0x80	Stop	End of frame

Jumper and button

Since firmware version **02.31** – included

(devices support temperature measurement in °C **or** °F and all with pressure measurement):

Communication with HWg Poseidon units

This communication protocol is supported by Txxxx series since Firmware version 02.33 (included) and newer.

Protocol restrictions:

Measured temperature is transferred always at °C (doesn't support °F), next conversion from °C to °F is possible inside of HWg Poseidon unit.

Computed value is selectable between dew point temperature and absolute humidity. Rest of computed values aren't supported by this communication protocol. Selection is provided by user's software *Tsensor*.

Pressure value is transferred at kPa with one decimal point resolution.

There is NOT supported CO₂ measurement.

Possible device address range is from „A“ to „Z“ and from „a“ to „z“. There is possible to show actual device address on LCD display with using of “Info mode” (see User's manual of device). Device address is shown as number corresponding with ASCII code of address. It is first address used by the device. Device occupies next number of addresses by device type (number of measured values). Addresses „T“ and „t“ are reserved and can't be used as device address. These addresses are skipped!

Address change with using of command „T#<new address>“ is permitted for first ten seconds after power up only! Trying to change address latter brings write error message (protection of random address change during activity).

Next table shows four examples of address assignment to each measured values according to device type (number of measured values). First column shows example when address of device is “A”, second column address “R”, third address “h” and fourth address “k”.

Example of address assignment by device types to each measured value:

Values measured by the device (device type)	Presets address (see „Info mode“)			
	A	R	h	k
temperature	A	R	h	k
temperature relative humidity computed value	A B C	R S U	h i j	k l m
temperature pressure	A B	R S	h i	k l
temperature relative humidity computed value pressure	A B C D	R S U V	h i j k	k l m n
pressure	A	R	h	k

Jumper

- Its placement is described at user's manual of the device.
If jumper is closed and the button is pressed for **longer than six seconds** then factory default of **communication protocol** is done – it is **Modbus RTU protocol, device**

address 01 and communication speed **9600Bd** („DEF“ text is blinking at LCD after button is pressed, six second latter it stays on, communication factory default is done).

Description of supported commands

Examples are for device with measuring of temperature, relative humidity, computed value and pressure with address set to „A“

Read temperature

Request for temperature: **T<address>I** example: TAI
 Device response ***<address><teplota><CR>** example: *A+020.5C
 Device response (error) ***<address>Err<CR>** example: *AErr
 <address> character from „A“ to „Z“ or „a“ to „z“ except of „T“ and „t“
 <CR> character 0xD or 13 dec – End Of Line
 <temperature> syntax *A+020.5C

Read humidity

Request for humidity: **T<address>I** example: TBI
 Device response ***<address>< humidity ><CR>** example: *B062.1%
 Device response (error) ***<address>Err<CR>** example: *BErr
 <address> character from „A“ to „Z“ or „a“ to „z“ except of „T“ and „t“
 <CR> character 0xD or 13 dec – End Of Line
 < humidity > syntax *B062.1%

Read computed value

Type of computed value is described by one character placed at the end of response - „d“ for dew point temperature and „h“ for absolute humidity.

Request for value: **T<address>I** example: TCI
 Device response ***<address><value><CR>**
 example: *C +013.3d (for dew point temperature)
 example: *C+011.6h (for absolute humidity)
 Device response (error) ***<address>Err<CR>** example: *CErr
 <address> character from „A“ to „Z“ or „a“ to „z“ except of „T“ and „t“
 <CR> character 0xD or 13 dec – End Of Line
 < computed value > syntax *C+013.3d
 *C+011.6h

Read pressure

Request for pressure: **T<address>I** example: TDI
 Device response ***<address>< pressure ><CR>** example: *D+101.3P
 Device response (error) ***<address>Err<CR>** example: *DErr
 <address> character from „A“ to „Z“ or „a“ to „z“ except of „T“ and „t“
 <CR> character 0xD or 13 dec – End Of Line
 < pressure > syntax *D+101.3P i.e. 101.3kPa

Change of device address

Assign new address: **T#< new address >** example: T#A
 Device response ***< new address >OK<CR>** example: *AOK
 Device response (error) ***< old address >Err<CR>** example: *BErr
 <address> character from „A“ to „Z“ or „a“ to „z“ except of „T“ and „t“
 <CR> character 0xD or 13 dec – End Of Line

Address change with using of command „T#<new address>“ is permitted for first ten seconds after power up only! Trying to change address latter brings write error message (protection of random address change during activity). **This command can be used when the communication bus is connected with one device only (no other devices connected to bus)!**

Device identification

Request for device type: **T<address>?** example: TA?
Device response ***<address><Identification><cr>** example: *A T7410 0233
 < Identification > “Txxxx ... device type, 0233 ... FW version
 <CR> character 0xD or 13 dec – End Of Line

Setting of device with Hyperterminal

There is possible to set some settings of device with digital communication interface RS232/RS485 with Hyperterminal (without user's software). Each new setting of device parameters is stored in its internal memory⁴. If modification of device setting is needed (communication protocol, its parameters, setting of LCD display), it is recommended to use of **User's software** available at www.cometsystem.cz (providing all settings of the device parameters) or proceed in following way (support only basic setting):

- Connect device with PC, for devices with RS485 interface use converter RS485/RS232 (with automatic switching control).
- Run program „HyperTerminal“ on your computer – it is a part of Windows operating system (Start → Program Files → Accessory → Communication → HyperTerminal) and set transmission parameters. I.e. enter name of new connection (e.g. Transmitter), press button OK, window „Connect“ appears. In field „Connect by means of“ select COM port, which device is connected to (e.g. COM1) and press OK. In following window „COM1 – Features“ enter to field:

„Bits per second“ **9600**

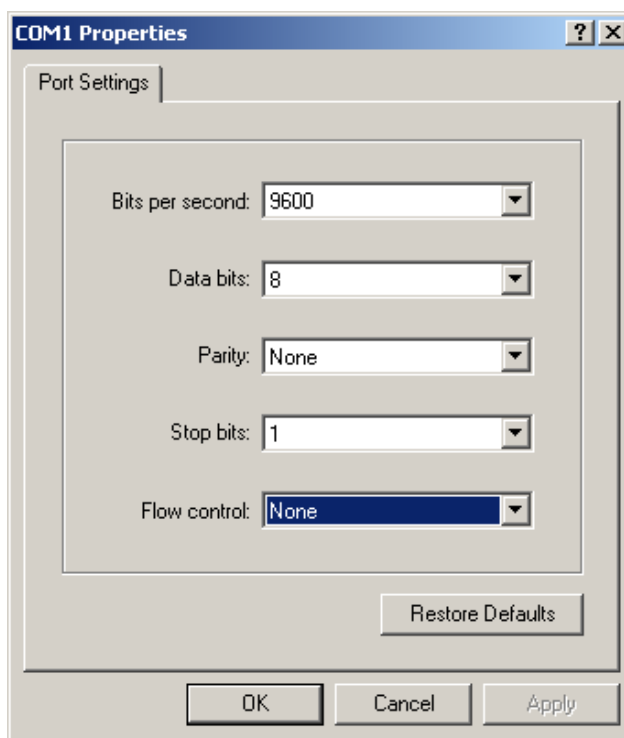
“Data bits“ **8**

“Parity“ **None**

“Number of stop-bits“ **1**

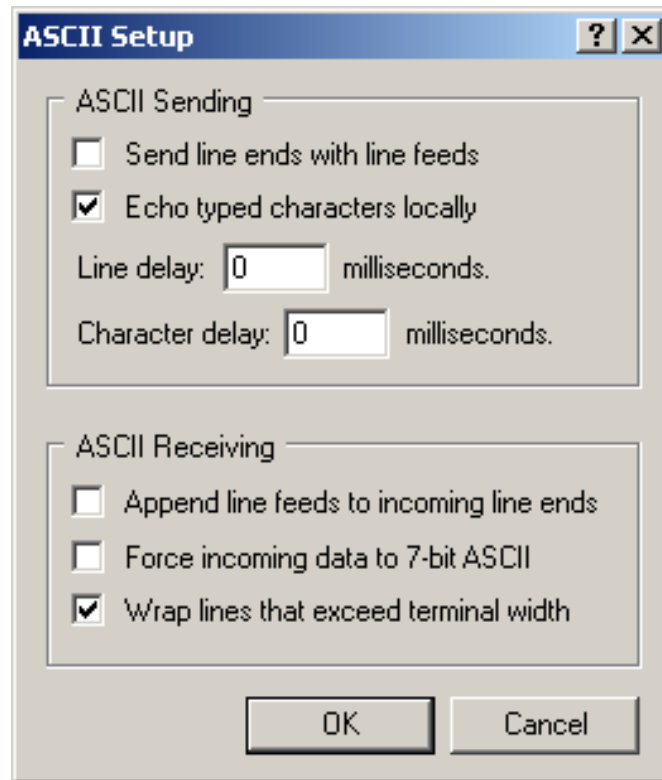
“Flow control“ **None**

Continue by pressing OK.



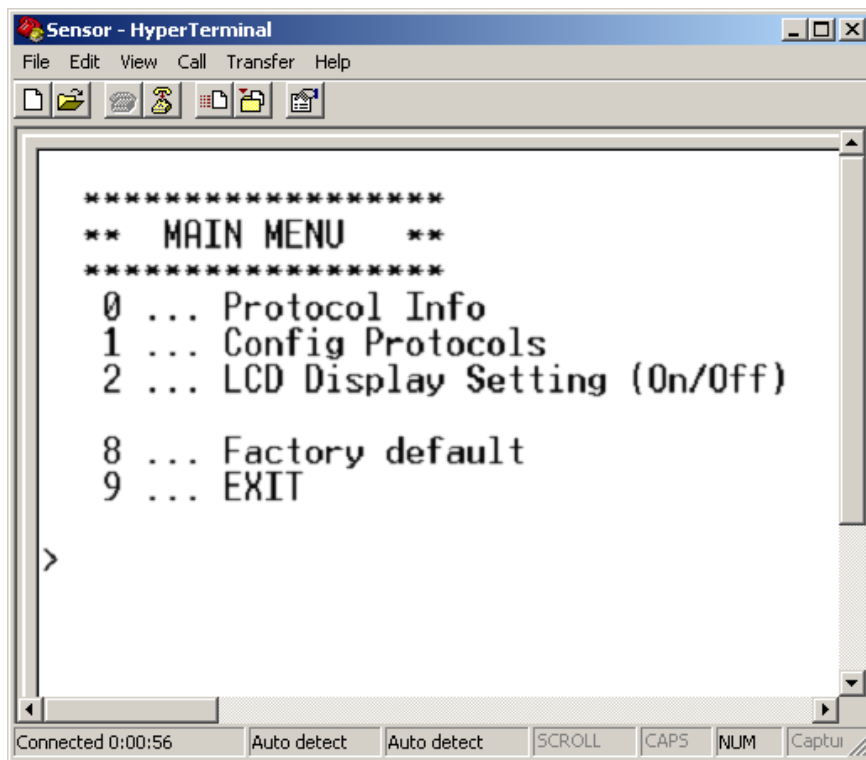
- Select item „File“, „Features“ in menu. Select bookmark „Setup“, in the window, click on „ASCII Setup...“ and modify all items in accordance with following figure and press OK

⁴ During writing to device memory no power failure should appear! Such failure can cause damage of other settings stored in the device!



- For industrial device types unscrew 4 screws of device cover and remove it. For indoor device types remove the front part (see Instruction manual of the device). Then plug in the jumper.
- Keep the button inside the device pressed, only now you can connect power voltage and then release the button. If device is powered directly from PC communication port (for interface RS232), it is necessary first to disconnect communication cable, then to keep the button pressed, to connect communication cable (and also power) and only now release the button.
- LCD display of the device displays „PC“.

- Running HyperTerminal displays main menu.



Select required items to set the device:

- 0 ... Displays actual setting of the device
- 1 ... Selection of communication protocol and setting of its parameters (device address, communication speed...). For entering numeric values use digits 0 to 9 and characters „A“ to „F“ (upper case letters), device address is entered always as two digits hexadecimal number (no decimal, e.g. address 11 i.e. Bh must be entered as 0B).
- 2 ... Setting of LCD display of the device (display switched ON/ switched OFF, selection of displayed values)
- 8 ... Setting communication to default value from manufacturer (Modbus, address 01, 9600 Bd)
- 9 ... End of setting

All changes in setting are continuously stored automatically.

- If needed close device again with cover.