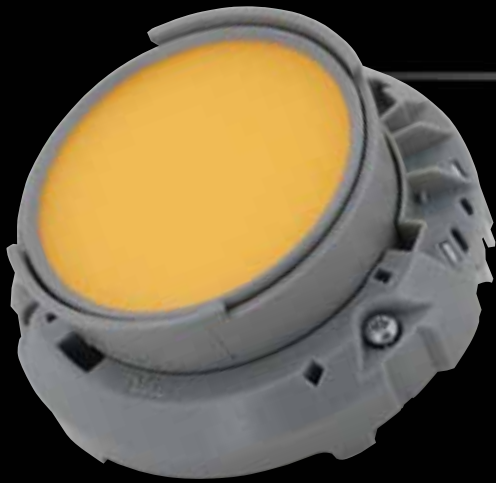


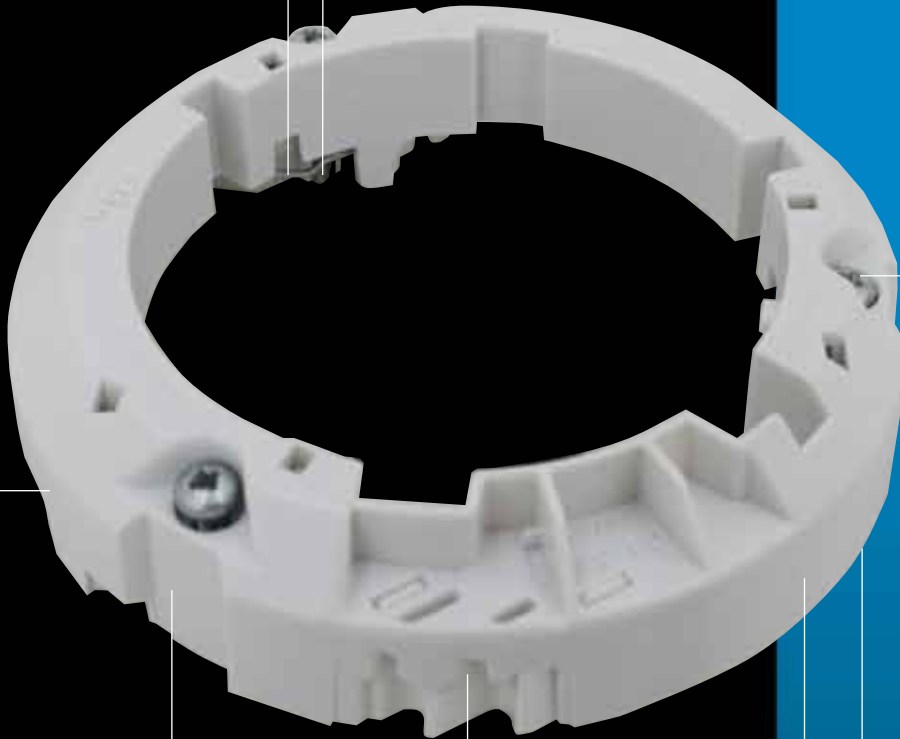
LED-LOK™ LLE Downlight Holder



- *Mates with all "Puck-Style" LLE manufacturers*
- *Provides enduser-friendly, future-proof luminaire*
- *Includes features for significant OEM design flexibility*
- *Reduces factory installed cost*

Independent springs provide even thermal force

Thread-forming screws drive own threads in extruded and drilled holes



Premounted screws provide fast installation

Air vents on circumference aid air flow across heatsink

Smart Twist System allows easy attachment of accessories

Small OD, enables use in 4" cans

Color-coded holders prevent installation mistakes with incorrect voltage

Contact IDEAL to learn about LED technology developments for other lighting applications.

Flexible wire ports allow tangential & axial wire routing for maximum luminaire flexibility

PATENTS PENDING





LED-LOK™ LLE Downlight Holder



Cat. No.	Description
50-1651	White, 100-120V Key, 100/carton
50-1652	Gray 200-277V Key, 100/carton

Specifications		
Electrical	UL/CSA	ENEC
Voltage	120V (White) / 277V (Gray)	300V
Current	1 Amp	2 Amp
Mechanical		
Diameter	3.67 in.	93.1mm
Height	0.75 in.	18.8mm
Screw Size	M3 Threadformer	
Weight	26 grams	
Physical		
Housing	Thermoplastic	
Electrical Contacts	Phos. Bronze	
Plating	Tin	
Temperature	110°C	T-110
Color	White (120V); Gray (277V)	Gray (230V)
Standards and Specifications		
	UL 496 & CSA	ENEC 60838-1
	RoHS and REACH Compliant US & Foreign Patents Pending	
Wire Range		
Solid	18 AWG	0,5 – 1,5mm ²
Stranded	18 AWG	
Tin Bonded	18 AWG Stranded	

