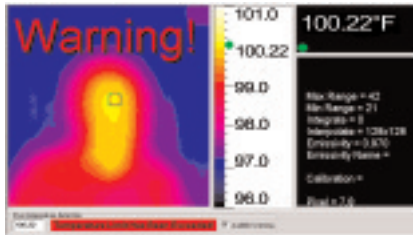


FEVER ALERT IMAGING SYSTEM

Screen for possible fever with Wahl's HSI2000S Fever Alert System!

An early warning system to screen people in "real time", the **Wahl Fever Alert Imaging System** quickly and accurately detects elevated body temperatures. In less than a second the Fever Alert automatically detects the highest temperature in an image and alerts you with both **AUDIBLE** and **VISUAL ALARMS** (through the PC speaker) when the pre-defined threshold is exceeded, indicating possible fever in humans.



Low cost and ease of use make the Fever Alert System the best choice as part of a prevention plan to screen large groups of people, and possibly minimize the spread of influenza in both the workplace and public venue's.



Wahl HSI2000S



Wahl HSI1000S

SPECIFICATIONS

Model Number	HSI2000S Fever Alert	HSI1000S Fever Alert
Temperature Range	32° to 122°F (0° to 50°C)	
Accuracy	±2°C from 68° to 122°F (20° to 50°C) over the environmental temperature operating range of 68° to 95°F (20°C to 35°C) ±5°C, ±5% from 14° to 302°F (-10° to 150°C) over the full environmental temperature operating range of 23° to 122°F (-5 to +50°C)	
Field of View	20 x 20	
Spectral Response	8 µm to 14 µm	
Temperature Sensitivity	~ 0.5°C @ 30°C	
Temperature Readout	All 256 pixels via RS232	
Detector	16 x 16 pixel array	
Frame Rate	8 Hz	
Interface	RS232 (2m Cable standard)	
Imager Power Supply	12 VDC @ 300mA	
Operating Temperature	23° to 122°F (-5° to +50°C)	
Storage Temperature	-4° to 176°F (-20° to +80°C)	
Humidity	10% to 100% non condensing	
CE	Yes, complies with EMC directive	
Housing	Die-cast Aluminum	Impact Resistant Plastic
Mounting	Mounting brackets supplied	
Dimensions	3.93 x 4.33 x 2.36 inches (100mm x 110mm x 60mm)	4.72 x 4.92 x 3.14 inches (120 x 125 x 80 mm)
Weight	25 ounces (≤0.7kg)	21 ounces (≤0.6kg)
Included in Shipping	Connection Cable for RS232 and Power, 12V Power Supply	
Computer Requirements	IBM compatible PC with a minimum of 32 Mb Ram; 300 MHz Processor; Windows 98, NT, or 2000; RS232 Serial Port (115K Band); 24 bit color graphic capability.	

Specifications subject to change without notice. Always verify temperature with a medical thermometer.

HSI2000S Features

- 3 Display Palettes: Ironbow, Rainbow and Grayscale
- Readout in °F or °C
- HSI2000S - die-cast aluminum
HSI1000S - impact resistant plastic
- Offset control (range) and Emissivity values
- User selectable sensitivity settings
- Image integration from 1 to 10 frames
- Less than a second to take a temperature reading, thus no delay processing people past the system
- Optimal response when screening is narrow focused and at a short distance
- Non-threatening - Non-contact:
 - Measures the temperature coming off a surface - no contact with subject
 - No lasers are used



Backed by Palmer Wahl's Service and Warranty!

